



---

*PA Public School Employees' Retirement System  
Investment Performance Analysis  
Final  
June 30, 2013*



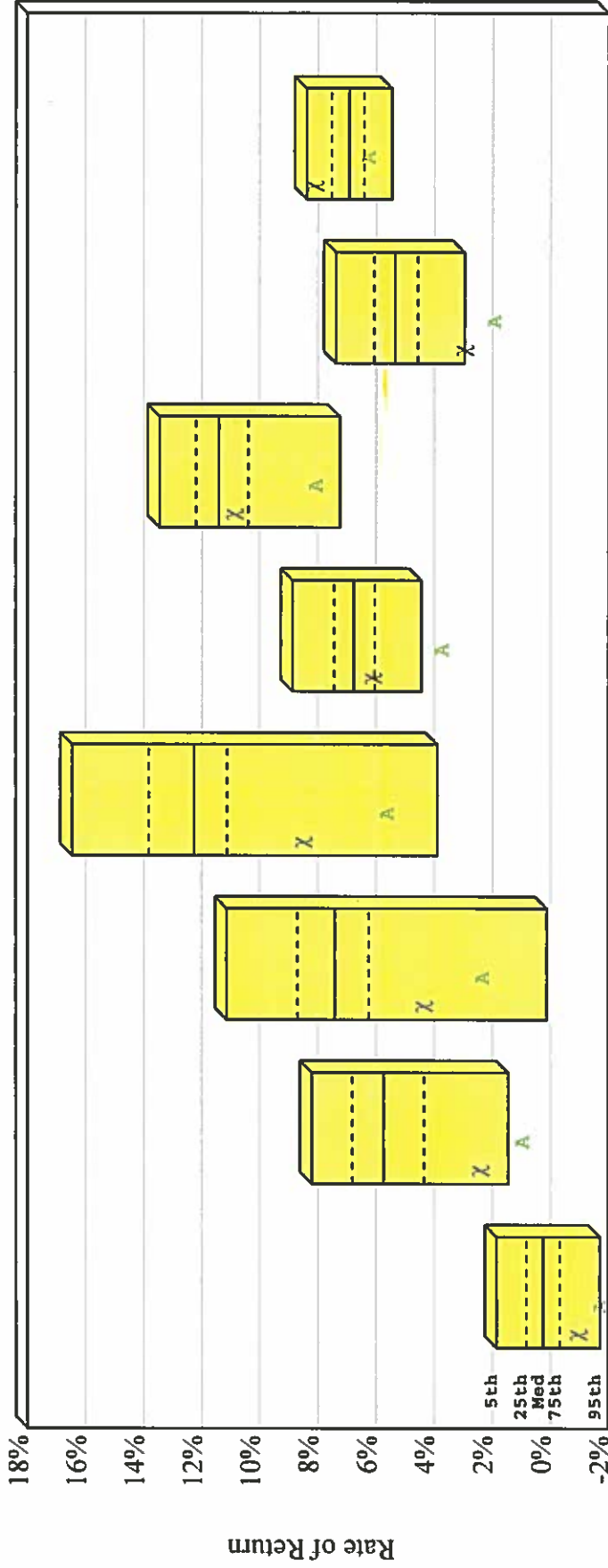
PA Public School Employees' Retirement Sys  
 Fund Return Table  
 Quarter Ended 6/30/13

Manager	1 Quarter	2 Quarters	3 Quarters	1 Year	3 Years	5 Years	Since 6/30/03	Inception Date	Inception Return
<b>Total Public Market Composite</b>									
Gross of Fee Return	-3.08	0.23	1.71	7.25	9.39	3.42	7.42	3/31/92	8.13
Net of Fee Return	-3.18	0.05	1.44	6.84	9.03	3.08	7.15	3/31/98	5.48
Blended Policy (Pub Mkt)	-3.60	-0.83	0.31	4.87	7.50	1.70	6.13	3/31/98	4.60
<b>Total Private Market Composite</b>									
Net of Fee Return	2.81	6.12	8.83	9.92	12.57	0.45	11.45	3/31/81	8.47
Blended Policy (Priv Mkt)	2.05	4.50	6.41	7.12	9.18	2.84	6.93		
<b>PSERS Total Fund</b>									
Gross of Fee Return	-1.04	2.32	4.27	8.41	10.78	2.87	8.03	6/30/82	10.21
Net of Fee Return	-1.12	2.14	3.98	7.96	10.36	2.50	7.72	6/30/97	6.57
Blended Policy (TF)	-1.65	1.02	2.39	5.68	8.13	1.99	6.33		

\*The PSERS Total Public Markets Composite and PSERS Total Fund incorporate the levered returns for the PSERS Gold Fund and PSERS U.S. Long Treasuries Fund.

# PA Public School Employees' Retirement Sys Performance Comparison

Total Returns of Total Fund Public Sponsors  
Periods Ended 6/30/13



Manager returns are Gross of Fees

	1 Quarter	2 Quarters	3 Quarters	1 Year	2 Years	3 Years	5 Years	10 Years
PSERS Total Fund	-1.04 (89)	2.32 (93)	4.27 (91)	8.41 (91)	6.04 (76)	10.78 (65)	2.87 (95)	8.03 ( 9)
Policy Index	-1.65 (94)	1.02 (95)	2.39 (94)	5.68 (94)	3.79 (96)	8.13 (92)	1.99 (98)	6.33 (77)
Median	0.26	5.75	7.43	12.27	6.78	11.41	5.36	6.94
Number of Funds	206	204	204	202	197	185	163	127



PA Public School Employees' Retirement Sys  
Fund Return Table  
Quarter Ended 6/30/13

Manager	1 Quarter	2 Quarters	3 Quarters	1 Year	3 Years	5 Years	Since 6/30/03	Inception Date	Inception Return
<b>Total Equity Composite</b>									
Net of Fee Return	-0.32	7.41	10.83	18.57	13.61	4.53	8.39	6/30/97	6.36
MSCI AC World IMI Index (N)	-0.47	6.40	9.58	17.08	12.60	2.80	8.02	6/30/97	4.91
MSCI ACWI with USA Gross IMI (N)	-0.41	6.54	9.83	17.43	12.91	3.08	8.32		
Blended Policy (Total Eq)	-0.41	6.54	9.83	17.43	12.80	3.61	7.84	6/30/97	5.48
<b>US Core Plus FI Composite</b>									
Net of Fee Return	-2.21	-1.68	-0.64	1.97	6.04	6.82	5.41	6/30/87	7.62
Barclays Universal	-2.37	-2.29	-1.73	0.24	4.08	5.52	4.84		
Barclays Aggregate	-2.32	-2.44	-2.24	-0.69					
Blended Policy (US Core+FI)	-2.32	-2.44	-2.24	-0.69	3.48	5.16	4.66		
<b>Non-U.S. Developed Mkts. FI Composite</b>									
Net of Fee Return	-3.34	-5.81	-4.93	-0.61	3.79	5.19	5.48	6/30/97	5.75
Barclays Multiverse Index	-2.73	-4.63	-4.91	-1.69	3.83	3.91	4.96		
Barclays GlobalAgg GDP Weighted	-2.53	-5.36	-4.78	-0.53					
Blended Policy (Active Global)	-2.53	-5.36	-4.78	-0.53	3.82	3.90	4.96		
<b>Emerging Markets FI Composite</b>									
Net of Fee Return	-6.15	-4.88	-1.62	4.24	6.96			3/31/10	6.34
JP Morgan GBI EM Global Divers.	-7.04	-7.15	-3.31	1.33	6.03			3/31/10	4.91
Barclays Emerging Mkt 10% Count.	-6.63	-6.11	-2.17	2.70					
Blended Policy (EM FI)	-6.63	-6.11	-2.17	2.70	6.29			3/31/10	5.14
<b>Global Fixed Income Composite</b>									
Net of Fee Return	-3.32	-3.00	-1.43	2.20				6/30/12	2.20
Blended Policy (Global FI)	-3.43	-3.72	-2.50	0.22				6/30/12	0.22
<b>U.S. Long Treasuries Composite</b>									
Net of Fee Return	-5.54	-7.84	-8.47	-7.37				6/30/12	-7.37
Barclays Long Treasury	-5.58	-7.83	-8.54	-8.36				6/30/12	-8.36

\*Please note the PSERS U.S. Long Treasuries Fund has a 2Q2013 levered return of (55.20) and an unlevered return of (5.54). All respective composites are incorporating the levered return.



**PA Public School Employees' Retirement Sys**  
**Fund Return Table**  
 Quarter Ended 6/30/13

Manager	1 Quarter	2 Quarters	3 Quarters	1 Year	3 Years	5 Years	Since 6/30/03	Inception Date	Inception Return
<b>High Yield Fixed Income Composite</b>									
Net of Fee Return	1.56	4.74	7.47	14.03	10.65	8.94	8.64	9/30/99	8.02
Barclays High Yield	-1.44	1.42	4.75	9.49	10.74	10.94	8.91	9/30/99	7.67
CS High Yield Index	-1.38	1.51	4.71	9.18	10.30	10.10	8.66	9/30/99	7.89
Blended Policy (HY & Opp)	-1.44	1.42	4.75	9.49	10.74	10.86	9.03	9/30/99	8.16
<b>Total US FI X TIPS Composite</b>									
Net of Fee Return	-0.48	1.40	3.36	8.10	8.41	8.68	6.64	6/30/97	7.13
<b>TIPS Composite</b>									
Net of Fee Return	-10.25	-10.13	-8.72	-5.65	8.57	9.57		3/31/04	7.90
Blended Policy (Net Levered TIPS)	-13.97	-14.67	-13.57	-11.74	2.02	2.83		3/31/04	3.98
<b>Total US Fixed Income Composite</b>									
Net of Fee Return	-4.43	-3.25	-1.51	2.56	8.17	8.75	6.91	6/30/97	7.30
Barclays Universal	-2.37	-2.29	-1.73	0.24	4.08	5.52	4.84	6/30/97	5.97
Barclays Aggregate Index	-2.32	-2.44	-2.24	-0.69	3.51	5.19	4.52	6/30/97	5.83
Blended Policy (Total US FI)	-5.58	-4.84	-3.25	-0.50	6.03	7.87	6.05	6/30/97	6.79
<b>Total Fixed Income x TIPS</b>									
Net of Fee Return	-1.77	-0.33	1.74	6.48				6/30/12	6.48
<b>Total FI x TIPS x Pimco Multi-Sector</b>									
Net of Fee Return	-1.46	0.02	2.07	6.95				6/30/12	6.95
<b>PIMCO Multi-Sector Strategy</b>									
Net of Fee Return	-3.96	-2.81	-0.60	3.06				6/30/12	3.06
Blended Policy Index	-2.96	-2.26	-0.49	2.61				6/30/12	2.61
<b>Total Fixed Income Composite</b>									
Net of Fee Return	-4.48	-3.45	-1.59	2.62	7.87	8.47	6.83	6/30/97	7.05
Blended Policy (Total FI)	-5.33	-4.99	-3.35	-0.26	5.99	7.49	6.00	6/30/97	6.65

\*Please note the PSERS U.S. Long Treasuries Fund has a 2Q2013 levered return of (55.20) and an unlevered return of (5.54). All respective composites are incorporating the levered return.

\*The PIMCO Multi-Sector Strategy Fund policy is as follows: 26% Barclays U.S. Agg. Bond, 16% Barclays U.S. Treasury Long, 5% Barclays Global Agg GDP-weighted Dev. Mkt ex-U.S. (Unhedged)



**PA Public School Employees' Retirement Sys**  
**Fund Return Table**  
 Quarter Ended 6/30/13

Manager	1 Quarter	2 Quarters	3 Quarters	1 Year	3 Years	5 Years	Since 6/30/03	Inception Date	Inception Return
<b>PTRES Composite</b>									
Net of Fee Return	1.80	7.57	9.59	10.62	12.78	4.75	11.04	6/30/97	9.81
FTSE EPRA/NAREIT Developed RE	-3.63	2.40	8.31	14.27	15.98	4.58	11.03	6/30/97	7.47
FTSE EPRA/NAREIT Developed X-US	-5.14	0.01	9.52	21.62	14.28	2.52	11.42	6/30/97	6.51
FTSE EPRA/NAREIT Global RE Index	-4.32	1.27	7.68	14.21	14.96	4.01			
Wilshire Real Est. Secs Index	-1.41	5.89	8.50	8.38	18.30	7.03	10.88	6/30/97	9.46
Blended Policy (PTRES)	-4.32	1.27	7.68	14.21	14.96	4.12	9.79	6/30/97	8.85
<b>Unallocated Cash &amp; Cash Equivalents</b>									
Net of Fee Return	0.02	0.16	0.37	0.54	2.42	0.74	0.64	6/30/98	0.34
ML US T-Bill 0-3 Months Index	0.01	0.03	0.05	0.08	0.08	0.22	1.64	6/30/98	2.39
<b>Commodities Composite</b>									
Net of Fee Return	-14.22	-16.12	-20.46	-11.35	0.41	-10.05		12/31/06	-1.58
DJ UBS Commodity Index	-9.44	-10.47	-16.13	-8.00	-0.25	-11.61		12/31/06	-3.42
<b>Total Absolute Return Composite</b>									
Net of Fee Return	-0.42	0.92	1.54	4.01	6.54			3/31/09	8.43
Blended Policy (Abs Ret)	1.82	3.68	5.57	7.50	7.67			3/31/09	7.76
<b>Risk Parity Composite</b>									
Net of Fee Return	-14.52	-12.46	-10.71	-4.26				6/30/11	7.82
Blended Policy (Risk Pari.)	-11.85	-8.52	-7.02	-2.68				6/30/11	-1.39
<b>MLP Composite</b>									
Net of Fee Return	3.68	25.43	25.48	37.08	27.84			9/30/08	28.41
S&P MLP Index	2.56	23.03	18.97	29.49	21.38			9/30/08	24.49
<b>Total Public Market Composite</b>									
Net of Fee Return	-3.18	0.05	1.44	6.84	9.03	3.08	7.15	3/31/98	5.48
Blended Policy (Pub Mkt)	-3.60	-0.83	0.31	4.87	7.50	1.70	6.13	3/31/98	4.60

\* Please note the PSERS Gold Fund has a 2Q2013 levered return of (100.00) and an unlevered return of (22.71). All respective composites are incorporating the levered return

\* The Risk Parity Policy is as follows: 35% MSCI ACWI (\$Net), 75% Barclays Capital U.S. Treasury Index, 120% Barclays Capital World Inflation Linked Bond Index Hedged, 100% Divers Commodity Index (Total Return) 50% Divers Cash Index 100% Frankl 1 Index



PA Public School Employees' Retirement Sys  
 Fund Return Table  
 Quarter Ended 6/30/13

Manager	1 Quarter	2 Quarters	3 Quarters	1 Year	3 Years	5 Years	Since 6/30/03	Inception Date	Inception Return
<b>Private Real Estate Composite</b>									
Policy Index	2.31	4.45	7.41	9.24	12.30	-8.26	6.11	3/31/81	7.37
<b>Total Real Estate Composite</b>									
Policy Index	1.93	5.12	7.39	9.74	12.37	1.82	8.24	3/31/81	8.21
<b>Total Alternative Investments</b>									
Venture Econ Index (Lagged) - Int	2.29	4.54	6.72	8.53	12.09	-6.36	6.66	3/31/81	7.63
Venture Econ Index (Lagged) - VC	1.93	5.12	7.39	9.74	12.37	2.72	8.75	3/31/81	8.41
Venture Econ Index (Lagged) - PE	3.10	7.10	9.67	10.34	12.71	4.98	14.32	6/30/98	10.40
Venture Econ Index(Lagged)-PE/PD/VC/INT	-1.86	-3.80	-4.90	-36.94					
<b>Total Private Market Composite</b>									
Blended Policy (Priv Mkt)	0.68	-0.50	-0.73	-0.88	1.12	-2.82	-1.61		
	2.28	4.60	6.50	6.34	8.31	3.79	6.63		
	2.13	4.14	5.84	5.66	7.69	3.22	6.11	6/30/98	3.52
	2.81	6.12	8.83	9.92	12.57	0.45	11.45	3/31/81	8.47
	2.05	4.50	6.41	7.12	9.18	2.84	6.93		



PA Public School Employees' Retirement Sys  
 Fund Return Table  
 Quarter Ended 6/30/13

Manager	1 Quarter	2 Quarters	3 Quarters	1 Year	3 Years	5 Years	Since 6/30/03	Inception Date	Inception Return
<b>Total US Large Cap Composite</b>									
Net of Fee Return	3.21	14.26	14.01	21.33	18.72	6.03	6.73	6/30/97	5.03
Published S&P 500 Index	2.91	13.82	13.39	20.60	18.45	7.01	7.30	6/30/97	5.70
MSCI USA Large Cap Index	2.61	12.91	11.74	18.75	17.51	6.03			
<b>US Small Cap Active Composite</b>									
Net of Fee Return	0.75	13.09	15.65	22.84	18.06	7.91	9.68	6/30/97	8.51
<b>US Micro Cap Composite</b>									
Net of Fee Return	7.36	24.61	16.32	17.34	14.88	6.46		12/31/04	3.88
MSCI US Microcap Index	6.30	24.50	22.51	32.69	22.91	13.67		12/31/04	7.04
Blended Policy (US Micro)	6.30	24.50	22.51	32.69	22.91	12.77		12/31/04	6.29
<b>Total US Equity Composite</b>									
Net of Fee Return	2.98	14.40	14.68	21.89	18.78	7.01	7.72	12/31/99	4.26
MSCI USA IMI	2.58	13.67	13.63	20.56	18.03	6.75	7.43	12/31/99	3.84
Wilshire 5000 Index	2.77	13.97	14.08	21.10	18.45	7.19	7.95	12/31/99	3.17
Blended Policy (Tot US Eq)	2.58	13.67	13.63	20.56	18.03	6.84	7.78	12/31/99	3.05
<b>PSERS ACWI x US Index Fund</b>									
Net of Fee Return	-2.93	0.61	6.64	14.66	8.80	0.06	9.13	3/31/97	5.58
MSCI ACWI/EAFE Index Blend (N)	-3.11	-0.04	5.80	13.63	7.99	-0.80	8.52	3/31/97	5.01
<b>Active Non-US Lg Cap Comp</b>									
Net of Fee Return	-2.57	1.60	6.90	14.47	12.22	1.46	9.77	6/30/97	6.13





PA Public School Employees' Retirement Sys  
 Fund Return Table  
 Quarter Ended 6/30/13

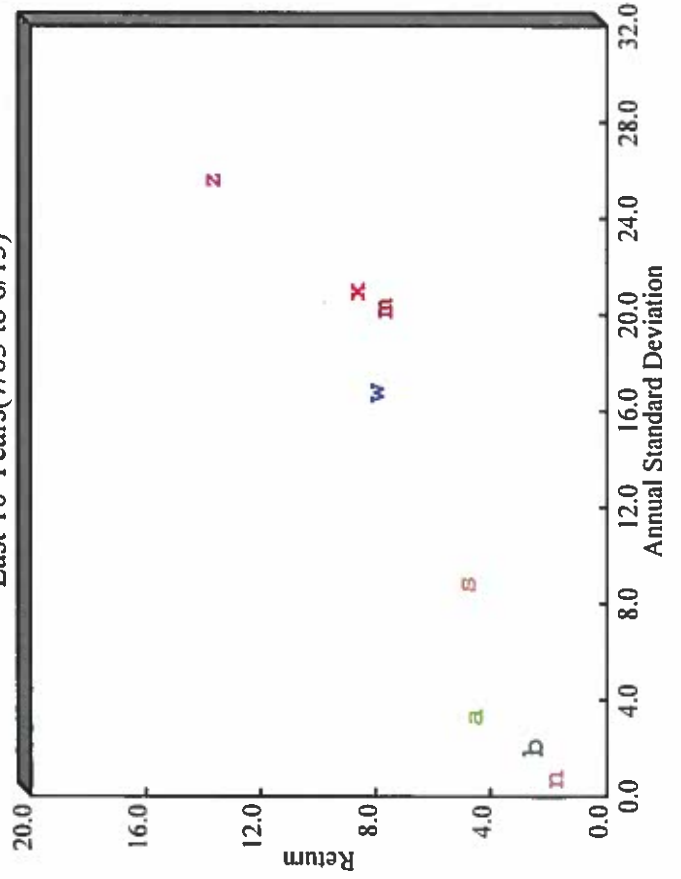
Manager	1 Quarter	2 Quarters	3 Quarters	1 Year	3 Years	5 Years	Since 6/30/03	Inception Date	Inception Return
<b>Active Non-US Sm Cap Comp</b>									
Net of Fee Return	-0.92	9.34	16.15	29.12	15.78	4.52		6/30/05	8.58
MSCI ACWI ex-US Sm Cap Idx (N)	-4.42	1.83	6.82	15.94	9.16	2.65		6/30/05	6.61
Blended Policy (Act Non-US Sm)	-4.42	1.83	6.82	15.94	9.16	2.65		6/30/05	7.37
<b>Passive Emerging Markets Composite</b>									
Net of Fee Return	-7.86	-9.39	-4.43					9/30/12	-4.43
MSCI EM Index (N)	-8.08	-9.57	-4.53					9/30/12	-4.53
<b>Active Emerg Mrkts Comp</b>									
Net of Fee Return	-5.84	-2.52	3.69	11.60	6.95	0.96	13.90	6/30/97	6.07
MSCI EM Index (N)	-8.08	-9.57	-4.53	2.87	3.38	-0.43	13.66	6/30/97	5.79
MSCI EM Index (G)	-7.95	-9.40	-4.32	3.23	3.72	-0.11	14.02	6/30/97	6.06
Blended Policy (EM)	-8.08	-9.57	-4.53	2.87	3.38	-0.43	13.84	6/30/97	5.95
<b>Total Non-US Equity Composite</b>									
Net of Fee Return	-3.09	1.85	7.85	16.08	9.56	2.42	10.43	9/30/99	6.04
MSCI-AC World Ex US IMI (\$N)	-3.27	0.18	5.92	13.90	8.13	-0.41	8.93	9/30/99	4.68
Blended Policy (Ttl Non-US Eq)	-3.27	0.18	5.92	13.90	8.13	0.57	9.18	9/30/99	4.54
<b>Total Equity Composite</b>									
Net of Fee Return	-0.32	7.41	10.83	18.57	13.61	4.53	8.39	6/30/97	6.36
MSCI AC World IMI Index (N)	-0.47	6.40	9.58	17.08	12.60	2.80	8.02	6/30/97	4.91
MSCI ACWI with USA Gross IMI (N)	-0.41	6.54	9.83	17.43	12.91	3.08	8.32		
Blended Policy (Total Eq)	-0.41	6.54	9.83	17.43	12.80	3.61	7.84	6/30/97	5.48



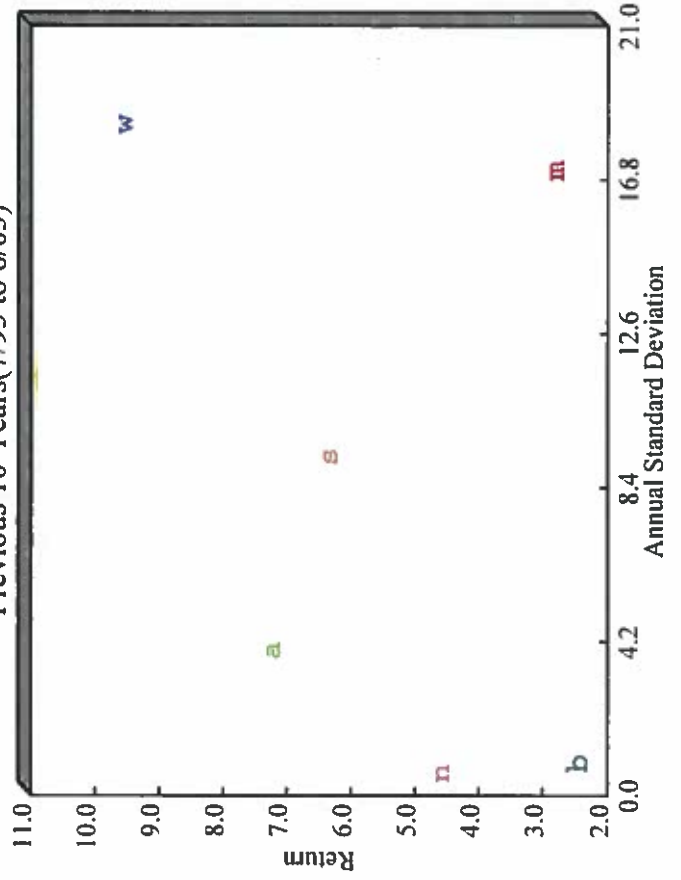
## Market Environment Overview of Major Asset Classes As of 6/30/13

Indices	Legend	Returns										10 Year Std Dev
		Qtr	Ytd	1Yr	3Yrs	5Yrs	10Yrs	20Yrs				
U.S. Equity (Wilshire 5000)	w	2.77	13.97	21.10	18.45	7.19	7.95	8.74	16.98			
U.S. Bonds (Barclays Aggregate)	a	-2.32	-2.44	-0.69	3.51	5.19	4.52	5.86	3.52			
Non U.S. Equity (ACWI X US Net)	x	-3.11	-0.04	13.63	7.99	-0.80	8.62	--	21.19			
Developed Equity (EAFE Net)	m	-0.98	4.11	18.62	10.04	-0.63	7.67	5.19	20.51			
Emerging Equity (Emg Mkts Net)	z	-8.08	-9.57	2.87	3.38	-0.43	13.66	--	25.80			
Int'l Bonds (Citigroup Non-US Gov't Bond)	s	-3.44	-7.14	-5.72	2.57	2.55	4.78	5.55	9.04			
Treasury Bills (91 Day)	n	0.02	0.04	0.11	0.11	0.29	1.72	3.13	0.95			
Consumer Price Index	b	0.31	1.70	1.75	2.32	1.31	2.43	2.43	2.26			

Last 10 Years(7/03 to 6/13)



Previous 10 Years(7/93 to 6/03)





Market Environment  
U.S. Common Stocks  
As of 6/30/13

	Returns						
	Qtr	Ytd	1Yr	3Yrs	5Yrs	10Yrs	20Yrs
<b>Indices</b>							
Standard & Poor's 500	2.92	13.84	20.60	18.45	7.00	7.30	8.66
Wilshire 5000	2.77	13.97	21.10	18.45	7.19	7.95	8.74
Wilshire 4500	2.21	15.43	25.22	19.26	8.74	10.47	9.46
Wilshire US Large Cap	2.74	13.68	20.55	18.27	6.77	7.58	8.68
Wilshire US Small Cap	2.80	16.28	26.06	20.22	10.86	11.23	10.42
Wilshire Real Est. Secs	-1.41	5.89	8.38	18.30	7.03	10.88	10.40
<b>Styles</b>							
Wilshire US Large Growth	1.86	11.14	17.28	17.60	6.55	7.43	8.13
Wilshire US Large Value	3.46	15.91	23.44	18.76	6.95	7.58	8.91
Wilshire US Small Growth	4.58	18.55	26.94	21.24	10.47	11.69	8.86
Wilshire US Small Value	1.26	14.32	25.29	19.07	11.25	10.72	11.52
<b>Sectors (Wilshire 5000)</b>							
Consumer Discretionary	7.50	20.47	33.63	26.56	16.61	9.21	--
Consumer Staples	0.91	15.71	18.13	19.67	11.47	10.15	--
Energy	-0.77	9.66	17.33	17.63	-0.32	14.02	--
Financials	5.34	17.95	31.31	14.21	3.11	2.02	--
Health Care	4.14	20.13	27.27	21.75	12.08	7.80	--
Industrials	2.30	14.69	24.52	19.24	6.63	9.05	--
Information Technology	1.63	6.60	7.98	15.11	7.75	7.68	--
Materials	-2.91	2.04	11.41	15.53	1.45	10.44	--
Telecommunication Services	2.03	11.05	12.84	21.18	8.69	8.56	--
Utilities	-2.15	10.98	8.93	15.68	3.90	10.06	--

Style Definitions (Wilshire Style Indices)

Large Co: Largest 750 companies in the Wilshire 5000

Small Co: Next 1750 companies in the Wilshire 5000

Value: Relatively low P/E and P/B ratios

Growth: Relatively high P/E and P/B ratios

Index Definitions

Wilshire 5000: All publicly traded U.S. corporations

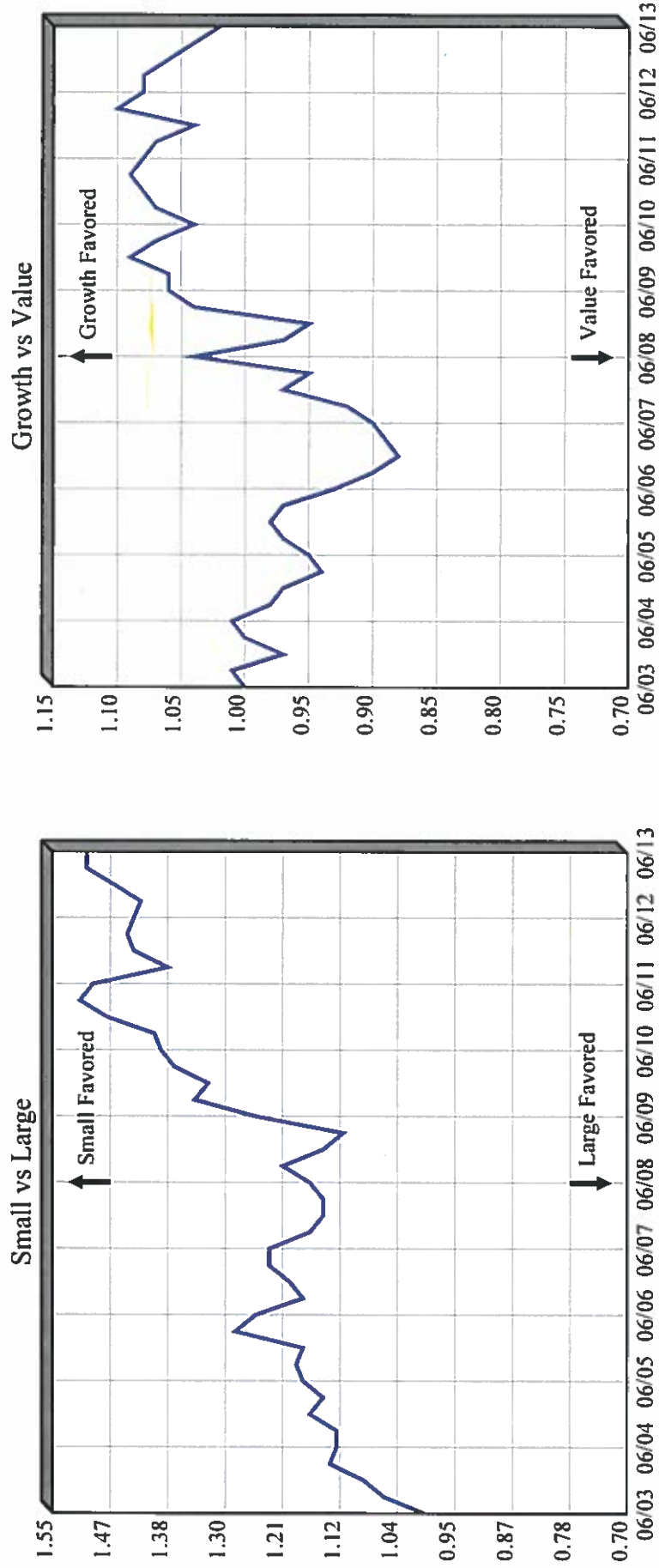
Wilshire 4500: All Wilshire 5000 companies excluding large S&P500 companies

Wilshire US Large Cap: Largest 750 publicly traded companies

Wilshire US Small Cap: Companies ranking between 750 and 2500 by market capitalization



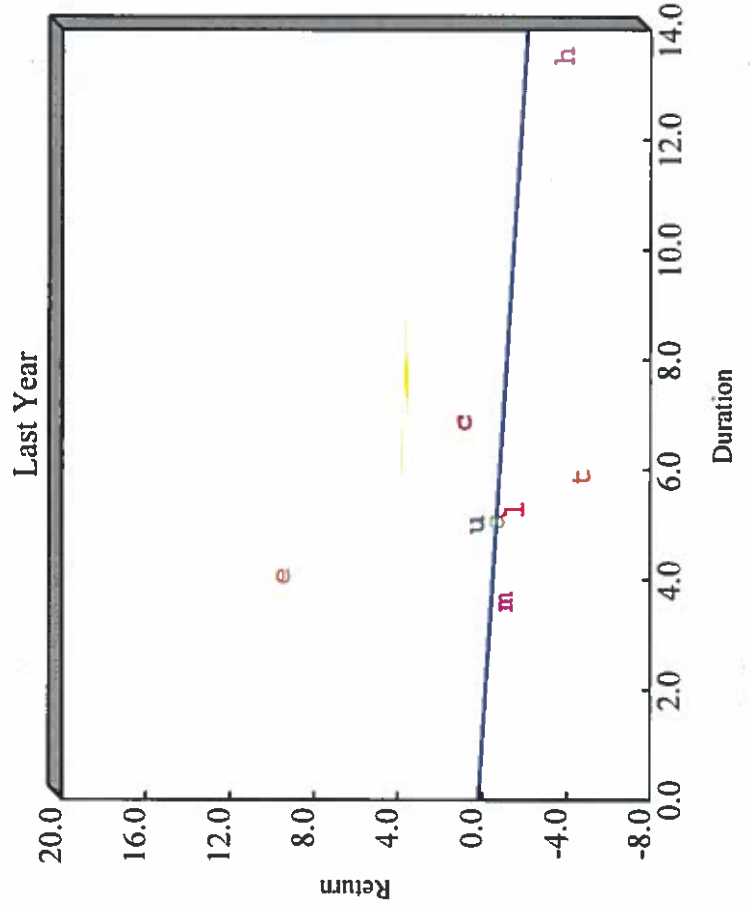
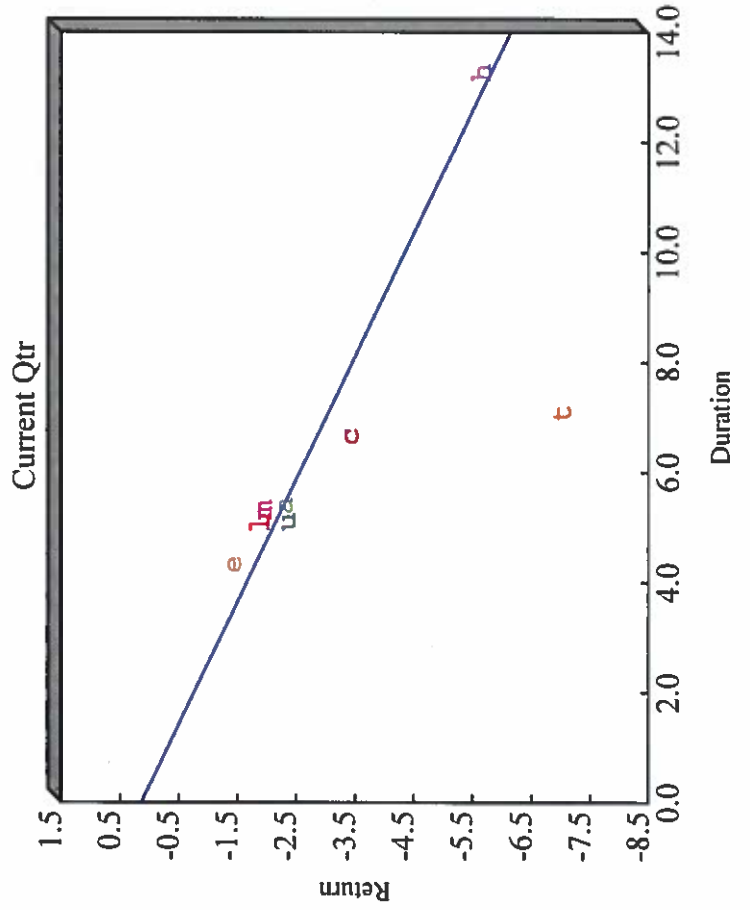
# Market Environment U.S. Common Stocks Relative Return As of 6/30/13



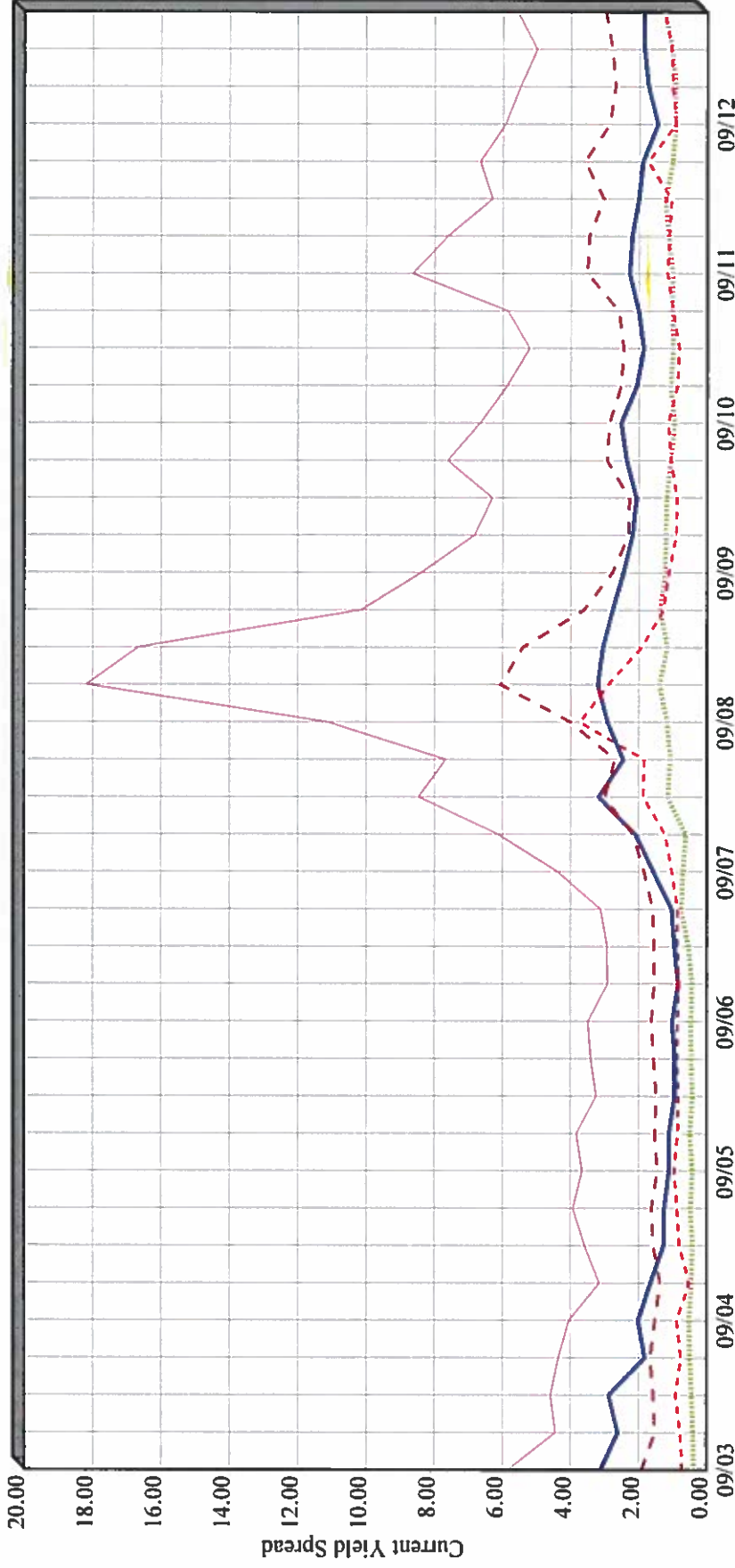
Based on Wilshire Style Indices

## Market Environment U.S. Fixed Income Indices As of 6/30/13

Indices	Legend	Returns							Characteristics (Current Qtr)			
		Qtr	Ytd	1Yr	3Yrs	5Yrs	10Yrs	20Yrs	Eff Maturity	Eff Duration	Yld to Mat	
Barclays Aggregate	a	-2.32	-2.44	-0.69	3.51	5.19	4.52	5.86	7.45	5.49	2.35	
Barclays Treasury	l	-1.93	-2.11	-1.64	3.12	4.49	4.14	5.64	6.25	5.15	1.23	
Barclays Credit (Corporate)	c	-3.44	-3.60	0.84	5.47	6.96	5.10	6.41	10.19	6.75	3.24	
Barclays Mortgage	m	-1.96	-2.01	-1.10	2.51	4.84	4.70	5.81	7.12	5.22	3.12	
Barclays High Yield	e	-1.44	1.42	9.49	10.74	10.94	8.91	7.74	6.73	4.41	6.66	
Citigroup High Grade	h	-5.69	-7.95	-3.98	6.98	9.44	6.01	7.39	26.74	13.35	4.51	
Barclays Universal	u	-2.37	-2.29	0.24	4.08	5.52	4.84	6.04	7.36	5.38	2.79	
Barclays US TIPS	t	-7.05	-7.39	-4.78	4.63	4.41	5.19	--	8.67	7.17	2.14	



**Market Environment**  
**U.S. Fixed Income Markets**  
**Historical Spread Comparison to Treasuries As of 6/30/13**

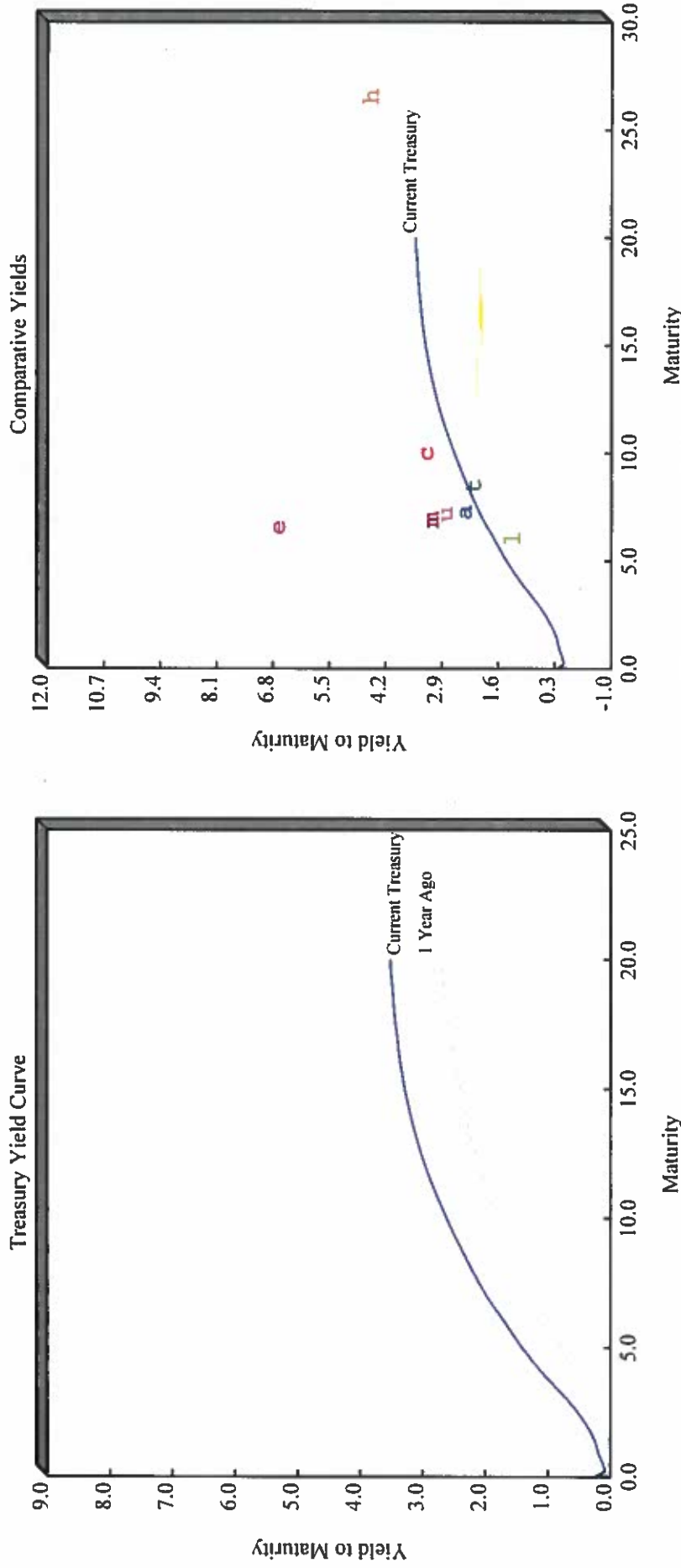


Description	Legend	Current Qtr Spread	Median Spread (10 Years)
Barclays Mortgage		1.87	2.02
Barclays Long Agencies		1.26	0.95
Barclays AAA Long Corp		1.26	0.95
Barclays BAA Long Corp		2.99	2.37
Barclays High Yield		5.57	5.70

# Market Environment

## U.S. Fixed Income Markets

### Yield Spread To Treasuries As of 6/30/13



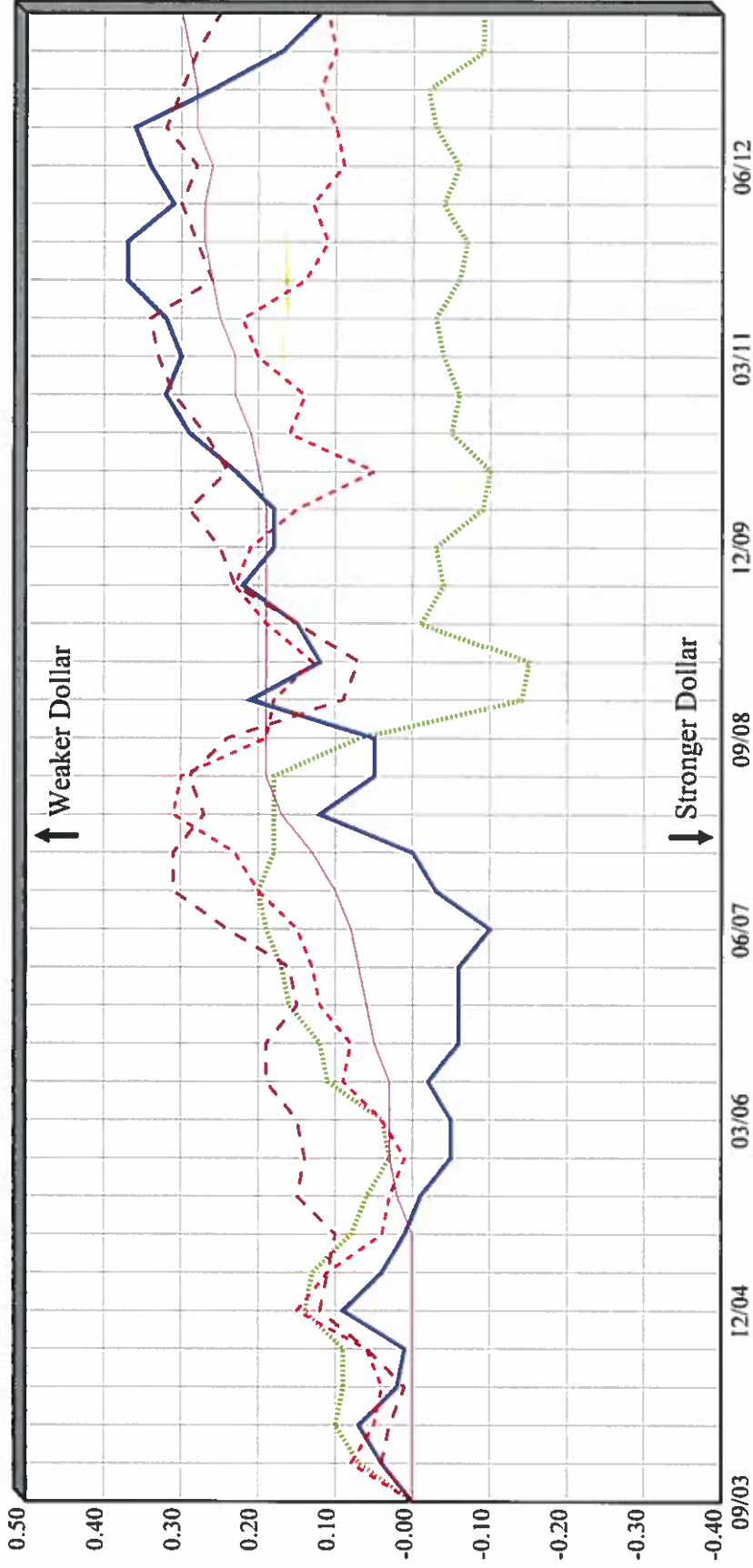
Description	Legend	Eff Maturity	Yield to Mat
Barclays Aggregate	a	7.45	2.35
Barclays Treasury	l	6.25	1.23
Barclays Credit	c	10.19	3.24
Barclays Mortgage	m	7.12	3.12
Barclays High Yield	e	6.73	6.66
Citigroup High Grade	h	26.74	4.51
Barclays Universal	u	7.36	2.79
Barclays U.S. TIPS	t	8.67	2.14



**Market Environment  
International Markets**  
As of 6/30/13

	Returns							10 Year Std Dev
	Qtr	Ytd	1Yr	3Yrs	5Yrs	10Yrs	20Yrs	
<b>Equity (in U.S. dollars)</b>								
U.S. (S & P 500)	2.92	13.84	20.60	18.45	7.00	7.30	8.66	16.48
Non U.S. (ACWI X U.S.) Net	-3.11	-0.04	13.63	7.99	-0.80	8.62	--	21.19
Developed (EAFE) Net	-0.98	4.11	18.62	10.04	-0.63	7.67	5.19	20.51
Emerging (Emg Mkts) Net	-8.08	-9.57	2.87	3.38	-0.43	13.66	--	25.80
Europe	-0.51	2.18	18.86	10.53	-1.35	7.50	7.85	22.27
Pacific	-1.74	7.83	18.45	9.50	1.07	8.16	1.94	19.44
France	2.66	3.23	22.64	8.57	-3.25	6.44	6.85	23.92
Germany	2.71	2.89	27.20	12.11	-1.21	9.95	7.85	26.45
Japan	4.40	16.55	22.24	8.62	-0.15	6.24	0.09	19.34
United Kingdom	-2.16	0.27	11.81	12.66	0.42	7.25	7.31	20.75
<b>Equity (in local currency)</b>								
Non U.S. (ACWI X US) Net	-0.16	6.72	20.06	8.53	1.54	7.41	--	16.42
Developed (EAFE) Net	1.71	11.91	26.60	10.01	1.74	6.37	4.73	16.48
Emerging (Emg Mkts) Net	-4.43	-5.10	5.99	5.62	2.47	13.36	--	20.08
Europe	-0.12	7.06	20.11	9.26	2.73	6.75	7.37	16.43
Pacific	5.09	21.45	39.79	11.63	0.19	5.92	1.34	19.19
France	2.28	5.68	21.22	7.66	1.24	5.49	6.39	18.12
Germany	2.22	5.23	25.23	10.75	3.14	8.85	7.45	20.86
Japan	10.27	33.92	52.53	13.05	-1.35	4.29	-0.20	22.46
United Kingdom	-1.27	8.49	17.04	12.90	6.46	8.38	7.39	14.59
<b>% Change in Exchange Rates</b>								
Euro vs Dollar	1.23	-1.41	2.43	2.00	-3.77	1.25	--	10.12
Yen vs Dollar	-5.35	-12.96	-19.68	-3.78	1.31	1.91	0.31	11.51
Pound vs Dollar	-0.12	-6.69	-3.30	0.46	-5.29	-0.84	0.03	10.56
<b>International Fixed Income</b>								
Citigroup Non-US Gov't Bond	-3.44	-7.14	-5.72	2.57	2.55	4.78	5.55	9.04
Citigroup World Bond	-2.97	-5.66	-4.50	2.72	3.04	4.70	5.60	7.59
Citigroup Non-US Hedged	-1.29	-0.03	2.99	3.08	4.52	4.02	6.14	3.19
Barclays Global Aggregate	-2.79	-4.83	-2.18	3.55	3.68	4.79	5.70	6.03

Market Environment  
 U.S. Dollar Cost of Foreign Currencies  
 As of 6/30/13



Description	Legend
Japanese Yen	
U.K. Pound	
Euro	
Canadian Dollar	
Chinese Yuan	



Market Environment  
Fund Return Table  
Quarter Ended 6/30/13

Manager	1 Quarter	2 Quarters	3 Quarters	1 Year	3 Years	5 Years	Since 6/30/03	Inception Date	Inception Return
<b>PSERS INDICES</b>									
Wilshire 5000	2.77	13.97	14.08	21.10	18.45	7.19	7.95	12/31/70	10.44
MSCI USA IMI Index	2.58	13.67	13.63	20.56	18.03	6.75	7.43	6/30/94	9.74
Wilshire 4500	2.21	15.43	18.98	25.22	19.26	8.74	10.47	9/30/60	13.27
Russell 3000	2.69	14.06	14.35	21.47	18.63	7.24	7.81	12/31/78	11.68
Published S&P 500	2.91	13.82	13.39	20.60	18.45	7.01	7.30	3/31/82	11.77
MSCI USA Large Cap	2.61	12.91	11.74	18.75	17.51	6.03		9/30/05	5.10
S&P 500/Citigroup Value Index	3.37	15.74	17.64	25.05	18.11	6.48	7.36	12/31/92	8.77
S&P 500/Citigroup Growth	2.48	12.05	9.76	16.80	18.89	7.57	7.18	12/31/74	11.01
Russell 1000	2.65	13.90	14.04	21.23	18.64	7.12	7.67	12/31/78	11.70
Russell 1000 Value	3.20	15.91	17.68	25.32	18.51	6.67	7.78	12/31/78	12.26
Russell 1000 Growth	2.06	11.80	10.32	17.05	18.68	7.47	7.40	12/31/78	10.75
Published S&P 400	1.00	14.59	18.72	25.18	19.45	8.91	10.74	12/31/91	11.70
S&P Citigroup 400 Value	1.00	15.98	21.21	27.04	18.89	8.89	10.80	6/30/91	12.58
S&P 400/Citigroup Growth Index	1.00	13.26	16.38	23.43	20.05	8.86	10.59	6/30/99	8.09
S&P MLP Index	2.56	23.03	18.97	29.49	21.38	18.12	15.10	9/30/01	14.98
Russell 2500	2.28	15.43	19.01	25.62	19.57	9.21	10.34	12/31/78	12.99
MSCI USA SMID	2.51	15.61	18.65	25.36	19.36	8.76	10.29	6/30/94	10.35
Russell 2500 Value	1.54	15.09	19.86	26.87	18.92	9.42	10.16	12/31/85	11.57
Russell 2500 Growth	3.22	15.82	17.88	24.03	20.22	8.94	10.27	12/31/85	9.37
Published S&P 600	3.92	16.19	18.77	25.18	20.27	9.95	10.77	12/31/93	10.23
S&P 600/Citigroup Value Index	4.39	16.60	20.31	28.45	19.84	10.81	10.82	6/30/01	8.73
S&P 600/Citigroup Growth Index	3.44	15.77	17.25	22.05	20.78	9.83	11.11	6/30/01	8.69
Russell 2000	3.09	15.86	18.00	24.20	18.67	8.77	9.53	12/31/78	11.68



Market Environment  
Fund Return Table  
Quarter Ended 6/30/13

Manager	1 Quarter	2 Quarters	3 Quarters	1 Year	3 Years	5 Years	Since 6/30/03	Inception Date	Inception Return
MSCI USA Small Cap Index	2.63	15.75	18.75	25.18	19.38	10.10	10.06	12/31/00	8.68
Russell 2000 Value	2.47	14.38	18.07	24.75	17.33	8.59	9.30	12/31/78	13.41
MSCI USA Small Cap Value	1.38	15.08	19.01	25.32	18.24	11.10	10.18	6/30/94	10.62
Russell 2000 Growth	3.73	17.42	17.95	23.66	19.95	8.88	9.62	12/31/78	9.56
MSCI USA Small Cap Growth	3.90	16.43	18.48	25.03	20.43	9.00	11.49	6/30/94	10.58
Wilshire US Micro Cap	5.69	21.77	19.26	27.96	17.65	9.58	8.79	6/30/78	11.57
MSCI US Microcap Index	6.30	24.50	22.51	32.69	22.91	13.67		9/30/04	8.75
Wilshire Real Est. Secs	-1.41	5.89	8.50	8.38	18.30	7.03	10.88	12/31/77	12.11
Wilshire REIT Index	-1.39	5.94	8.57	8.41	18.50	7.20	10.80	12/31/77	12.59
FTSE EPRA/NAREIT Global RE Index	-4.32	1.27	7.68	14.21	14.96	4.01	11.03	3/31/05	5.16
FTSE EPRA/NAREIT Developed RE	-3.63	2.40	8.31	14.27	15.98	4.58	11.42	12/31/89	7.64
FTSE EPRA/NAREIT Developed x N Am.	-5.14	0.01	9.52	21.62	14.28	2.52	11.42	3/31/95	8.00
NCREIF ODCE NOF 1 Quarter Lag	2.43	4.56	7.21	9.66	14.03	-1.75	5.81	3/31/99	6.58
NTFI Opportunistic (ValueW-Lagged)	2.08	5.17	7.98	10.34	11.80	-5.32	10.63	12/31/88	8.16
NTFI Value Added Closed-End (ValueW-L)	1.35	5.17	5.92	8.21	12.91	-6.09	5.10	6/30/88	5.79
Venture Econ Index (Lagged) - VC	0.68	-0.50	-0.73	-0.88	1.12	-2.82	-1.61	12/31/01	-3.88
Venture Econ Index (Lagged) - PE/PD	2.28	4.60	6.50	6.34	8.31	3.79	6.63	12/31/01	5.11
Venture Econ Index(Lagged)-PE/PD/VC/INT	2.13	4.14	5.84	5.66	7.69	3.22	6.11	3/31/98	3.52
Venture Econ Index (Lagged) -Internal	-1.86	-3.80	-4.90	-36.94				3/31/12	-30.85
PSERS MSCI ACWI X US (G)	-2.90	0.27	6.18	14.14	8.48	-0.34	9.09	12/31/87	6.05
MSCI ACWI Ex-US (LC Gross)	-0.24	6.49	13.49	19.40	8.11	1.50	7.61	12/31/87	6.49
MSCI AC World IMI Index (\$N)	-0.47	6.40	9.58	17.08	12.60	2.80	8.02	6/30/94	6.34
MSCI ACWI X US IMI Index (N)	-3.27	0.18	5.92	13.90	8.13	-0.41	8.93	6/30/94	4.64

Market Environment  
Fund Return Table  
Quarter Ended 6/30/13

Manager	1 Quarter	2 Quarters	3 Quarters	1 Year	3 Years	5 Years	Since 6/30/03	Inception Date	Inception Return
MSCI ACWI with USA Gross IMI (N)	-0.29	6.72	10.04	17.72	13.19	3.30		12/31/06	2.55
MSCI-AC World Ex US IMI Index (LC Net)	-0.60	6.46	13.39	19.31	7.78	0.39	6.91	6/30/94	4.48
PSERS MSCI EAFE Index (N)	-0.98	4.11	10.94	18.62	10.04	-0.63	7.67	12/31/69	9.06
PSERS MSCI EMF Index (G)	-7.95	-9.40	-4.32	3.23	3.72	-0.11	13.07	12/31/87	11.67
PSERS MSCI EAFE + Canada (N)	-1.61	3.01	9.11	17.07	9.42	-0.84	7.86	12/31/69	9.03
Citigroup World ex-U.S. EMI	-2.64	4.03	9.42	18.53	11.33	2.00	11.00	6/30/89	6.05
MSCI ACWI X US Small Cap (N)	-4.42	1.83	6.82	15.94	9.16	2.65	11.30	6/30/94	5.00
MSCI - World Ex USA Small (\$Net)	-3.49	3.50	8.51	17.81	10.80	2.06		6/30/07	-1.47
MSCI Emerging Mkts Small Cap Index	-7.47	-3.58	1.34	9.86	3.72	4.55	14.97	6/30/94	5.04
Barclays Universal	-2.37	-2.29	-1.73	0.24	4.08	5.52	4.84	12/31/89	6.81
Barclays Aggregate	-2.32	-2.44	-2.24	-0.69	3.51	5.19	4.52	9/30/60	6.77
Barclays Global Aggregate	-2.79	-4.83	-5.28	-2.18	3.55	3.68	4.79	12/31/89	6.55
Barclays Multiverse Index	-2.73	-4.63	-4.91	-1.69	3.83	3.91	4.96	12/31/98	4.96
Barclays GlobalAgg GDPWeighted Dev xU	-2.53	-5.36	-4.78	-0.53	4.55	3.08	5.19	12/31/06	4.81
Barclays U.S. TIPS	-7.05	-7.39	-6.75	-4.78	4.63	4.41		9/30/97	6.52
Barclays Long Treasury	-5.58	-7.83	-8.54	-8.36	6.21	7.58	6.10	12/31/72	8.63
BGI Custom IL Bond Index	-11.84	-10.86	-9.02	-6.14	2.71	3.59		6/30/04	4.84
Barclays High Yield	-1.44	1.42	4.75	9.49	10.74	10.94	8.91	6/30/83	9.42
CS High Yield	-1.38	1.51	4.71	9.18	10.30	10.10	8.66	12/31/85	9.17
JP Morgan GBI EM Global Diversified	-7.04	-7.15	-3.31	1.33	6.03	6.71	10.28	12/31/02	10.89
Barclays Emerging Mkt 10% Country Cap	-6.63	-6.11	-2.17	2.70	6.29	5.37		6/30/08	5.37
Barclays Mortgage	-1.96	-2.01	-2.21	-1.10	2.51	4.84	4.70	12/31/75	8.08
HFN AB Index	1.63	3.85	6.05	7.50	4.85			9/30/08	4.81
91-Day Treasury Bill	0.02	0.04	0.08	0.11	0.11	0.29	1.72	9/30/60	5.33

Market Environment  
Fund Return Table  
Quarter Ended 6/30/13

Manager	1 Quarter	2 Quarters	3 Quarters	1 Year	3 Years	5 Years	Since 6/30/03	Inception Date	Inception Return
1 Month LIBOR Rate	0.05	0.10	0.15	0.21	0.23	0.46		12/31/05	1.85
Citigroup 1 Month T-Bill	0.01	0.02	0.04	0.05	0.07	0.16	1.55	6/30/86	3.71
ML US T-Bill 0-3 Months	0.01	0.03	0.05	0.08	0.08	0.22	1.64	12/31/97	2.48
Goldman Sachs Commodity	-5.93	-5.42	-8.52	2.03	4.72	-15.22	1.41	9/30/89	4.34
MSCI- World (Energy Sector)	-2.08	3.31	1.14	10.30	13.04	-2.82	11.17	12/31/97	8.69
MSCI Metals and Mining	-19.31	-29.07	-26.44	-20.02	-9.11	-17.43		3/31/04	3.11
MSCI - World (RE Mng/Dev Ind.) Index	-3.79	0.89	11.23	25.60	14.24	4.08		9/30/03	9.93
MSCI World (Agricultural Prod) Index	-2.03	8.69	11.99	9.74	10.33	-1.72	9.19	12/31/00	5.82
MSCI World (Constr. & Farm Mach.) Indx	-2.84	-0.28	9.40	11.03	13.90	3.25	14.99	12/31/00	13.46
MSCI - World (Materials Sector)	-8.46	-11.48	-7.03	0.31	3.87	-6.08	10.28	12/31/97	7.12
PSERS Currency Hedge Bnmk	0.00	0.00	0.00	0.00	0.00	2.65		3/31/06	0.31
PSERS Blended Policy (Risk Parity)	-11.85	-8.52	-7.02	-2.68				12/31/10	-0.39
MSCI ACWI (N)	-0.42	6.05	9.11	16.56	12.36	2.30	7.59	3/31/01	4.85
Barclays Treasury	-1.93	-2.11	-2.19	-1.64	3.12	4.49	4.14	12/31/72	7.71
Barclays World Infl. Linked Idx Hedged	-6.33	-4.64	-2.96	-1.99	4.60	4.51	5.06	12/31/96	6.45
DJ UBS Commodity Index	-9.44	-10.47	-16.13	-8.00	-0.25	-11.61	2.39	12/31/01	4.64
Dow Jones UBS Gold Index	-23.37	-27.21	-31.32	-24.26	-1.29	4.81	12.50	3/31/91	5.63
LIBOR 3 MONTH	0.07	0.14	0.22	0.34	0.36	0.69	2.10	9/30/97	2.93
MSCI EAFE Hedged Gross	-0.00	8.79	16.43	20.96	5.91	-1.23	3.96	12/31/87	3.17
S&P GSCI Precious Metals Index	-24.49	-28.43	-33.20	-25.07	-1.20	4.35	12.64	12/31/72	7.00
MSCI Emerging Markets Large Index(Net)	-8.13	-9.64	-4.60	2.74	3.55	-0.81	13.36	6/30/94	4.78
Standard & Poor's 500	2.92	13.84	13.40	20.60	18.45	7.00	7.30	9/30/60	10.01
Barclays Global Aggregate Index Hedged	-1.73	-1.16	-0.29	1.71	3.47	5.01	4.30	9/30/91	6.23





**PA Public School Employees' Retirement Sys**  
**Asset Allocation**  
**PSERS Total Fund**  
**Quarter Ended 6/30/13**

Manager Name	Equity		Bonds		Cash		Intl Equity		Intl Bonds		Real Estate		Special Invest		Other		As Allocated To Manager	
	\$(000)	%	\$(000)	%	\$(000)	%	\$(000)	%	\$(000)	%	\$(000)	%	\$(000)	%	\$(000)	%	\$(000)	%
US Equity x-E/M Composite	3,956,798	8.1	0	0.0	256,959	0.5	0	0.0	0	0.0	0	0.0	0	0.0	0	0.0	4,213,757	8.6
E/M US Equity Composite	168,873	0.3	0	0.0	6,174	0.0	0	0.0	0	0.0	0	0.0	0	0.0	0	0.0	175,046	0.4
<b>Managed Equity</b>	<b>4,125,670</b>	<b>8.4</b>	<b>0</b>	<b>0.0</b>	<b>263,133</b>	<b>0.5</b>	<b>0</b>	<b>0.0</b>	<b>0</b>	<b>0.0</b>	<b>0</b>	<b>0.0</b>	<b>0</b>	<b>0.0</b>	<b>0</b>	<b>0.0</b>	<b>4,388,803</b>	<b>9.0</b>
US Fixed Income x-E/M Composite	0	0.0	7,820,076	16.0	13,739	0.0	0	0.0	0	0.0	0	0.0	0	0.0	0	0.0	7,833,814	16.0
E/M US Core Plus FI Composite	0	0.0	138,023	0.3	1,990	0.0	0	0.0	0	0.0	0	0.0	0	0.0	0	0.0	140,014	0.3
PIMCO Multi-Sector Strategy	0	0.0	850,403	1.7	0	0.0	0	0.0	0	0.0	0	0.0	0	0.0	0	0.0	850,403	1.7
<b>Managed Fixed</b>	<b>0</b>	<b>0.0</b>	<b>8,808,502</b>	<b>18.0</b>	<b>15,729</b>	<b>0.0</b>	<b>0</b>	<b>0.0</b>	<b>0</b>	<b>0.0</b>	<b>0</b>	<b>0.0</b>	<b>0</b>	<b>0.0</b>	<b>0</b>	<b>0.0</b>	<b>8,824,231</b>	<b>18.0</b>
Unallocated Cash & Cash Equivalents	0	0.0	0	0.0	1,607,026	3.3	0	0.0	0	0.0	0	0.0	0	0.0	0	0.0	1,607,026	3.3
<b>Unallocated STIF?Dreyfus</b>	<b>0</b>	<b>0.0</b>	<b>0</b>	<b>0.0</b>	<b>1,607,026</b>	<b>3.3</b>	<b>0</b>	<b>0.0</b>	<b>0</b>	<b>0.0</b>	<b>0</b>	<b>0.0</b>	<b>0</b>	<b>0.0</b>	<b>0</b>	<b>0.0</b>	<b>1,607,026</b>	<b>3.3</b>
Non-U.S. Equity x-E/M Composite	0	0.0	0	0.0	121,910	0.2	4,695,495	9.6	0	0.0	0	0.0	0	0.0	0	0.0	4,817,405	9.8
E/M Non-US Equity Composite	0	0.0	0	0.0	794	0.0	99,384	0.2	0	0.0	0	0.0	0	0.0	0	0.0	100,178	0.2
<b>Intl Equity</b>	<b>0</b>	<b>0.0</b>	<b>0</b>	<b>0.0</b>	<b>122,704</b>	<b>0.3</b>	<b>4,794,879</b>	<b>9.8</b>	<b>0</b>	<b>0.0</b>	<b>0</b>	<b>0.0</b>	<b>0</b>	<b>0.0</b>	<b>0</b>	<b>0.0</b>	<b>4,917,584</b>	<b>10.0</b>
Global Fixed Income Comp	0	0.0	0	0.0	92,728	0.2	0	0.0	1,149,886	2.3	0	0.0	0	0.0	0	0.0	1,242,614	2.5
<b>Global Fixed Income</b>	<b>0</b>	<b>0.0</b>	<b>0</b>	<b>0.0</b>	<b>92,728</b>	<b>0.2</b>	<b>0</b>	<b>0.0</b>	<b>1,149,886</b>	<b>2.3</b>	<b>0</b>	<b>0.0</b>	<b>0</b>	<b>0.0</b>	<b>0</b>	<b>0.0</b>	<b>1,242,614</b>	<b>2.5</b>
Private Real Estate Composite	0	0.0	0	0.0	0	0.0	0	0.0	0	0.0	6,597,762	13.5	0	0.0	0	0.0	6,597,762	13.5
PTRES Composite	202,239	0.4	0	0.0	0	0.0	0	0.0	0	0.0	0	0.0	0	0.0	0	0.0	202,239	0.4
<b>Real Estate</b>	<b>202,239</b>	<b>0.4</b>	<b>0</b>	<b>0.0</b>	<b>0</b>	<b>0.0</b>	<b>0</b>	<b>0.0</b>	<b>0</b>	<b>0.0</b>	<b>6,597,762</b>	<b>13.5</b>	<b>0</b>	<b>0.0</b>	<b>0</b>	<b>0.0</b>	<b>6,800,002</b>	<b>13.9</b>
Managed Stock Distribution	17,974	0.0	0	0.0	0	0.0	0	0.0	0	0.0	0	0.0	0	0.0	0	0.0	17,974	0.0
Private Equity Composite	0	0.0	0	0.0	0	0.0	0	0.0	0	0.0	8,488,478	17.3	0	0.0	0	0.0	8,488,478	17.3
Private Debt Composite	0	0.0	0	0.0	0	0.0	0	0.0	0	0.0	1,496,041	3.1	0	0.0	0	0.0	1,496,041	3.1
Venture Capital Composite	0	0.0	0	0.0	0	0.0	0	0.0	0	0.0	835,627	1.7	0	0.0	0	0.0	835,627	1.7
Internally Managed Composite	0	0.0	0	0.0	0	0.0	0	0.0	0	0.0	47,722	0.1	0	0.0	0	0.0	47,722	0.1
<b>Special Investments</b>	<b>17,974</b>	<b>0.0</b>	<b>0</b>	<b>0.0</b>	<b>0</b>	<b>0.0</b>	<b>0</b>	<b>0.0</b>	<b>0</b>	<b>0.0</b>	<b>10,867,867</b>	<b>22.2</b>	<b>0</b>	<b>0.0</b>	<b>0</b>	<b>0.0</b>	<b>10,885,841</b>	<b>22.2</b>
Non-Core STIF	0	0.0	0	0.0	0	0.0	0	0.0	0	0.0	0	0.0	0	0.0	0	0.0	0	0.0
Miscellaneous Composite	477	0.0	31	0.0	0	0.0	0	0.0	0	0.0	0	0.0	0	0.0	0	0.0	508	0.0
Commodities Composite	1,224,279	2.5	0	0.0	620,034	1.3	0	0.0	0	0.0	0	0.0	0	0.0	0	0.0	1,844,313	3.8
<b>Total Absolute Return Composite</b>	<b>4,807,010</b>	<b>9.8</b>	<b>0</b>	<b>0.0</b>	<b>420,682</b>	<b>0.9</b>	<b>122,392</b>	<b>0.2</b>	<b>0</b>	<b>0.0</b>	<b>323,791</b>	<b>0.7</b>	<b>0</b>	<b>0.0</b>	<b>0</b>	<b>0.0</b>	<b>5,673,875</b>	<b>11.6</b>





PA Public School Employees' Retirement Sys  
 Asset Allocation  
 PSERS Total Fund  
 Quarter Ended 6/30/13

Manager Name	Equity		Bonds		Cash		Intl Equity		Intl Bonds		Real Estate		Special Invest		Other		As Allocated To Manager	
	\$(000)	%	\$(000)	%	\$(000)	%	\$(000)	%	\$(000)	%	\$(000)	%	\$(000)	%	\$(000)	%	\$(000)	%
MLP Composite	1,447,433	3.0	0	0.0	33,155	0.1	0	0.0	0	0.0	0.0	0.0	0.0	0.0	0.0	0.0	1,480,588	3.0
Risk Parity Composite		0.0		0.0	50,242	0.1		0.0		0.0		0.0					1,300,443	2.7
Other	7,479,200	15.3	31	0.0	1,124,114	2.3	122,392	0.2	0	0.0	0	0.0	0	0.0	1,624,234	3.3	10,349,970	21.1
<b>As Invested by Managers</b>	<b>11,825,083</b>	<b>24.1</b>	<b>8,808,533</b>	<b>18.0</b>	<b>3,225,433</b>	<b>6.6</b>	<b>4,917,271</b>	<b>10.0</b>	<b>1,149,886</b>	<b>2.3</b>	<b>6,597,762</b>	<b>13.5</b>	<b>10,867,867</b>	<b>22.2</b>	<b>1,624,234</b>	<b>3.3</b>	<b>49,016,070</b>	<b>100.0</b>
<b>As Allocated to Managers</b>	<b>4,388,803</b>	<b>9.0</b>	<b>8,824,231</b>	<b>18.0</b>	<b>1,607,026</b>	<b>3.3</b>	<b>4,917,584</b>	<b>10.0</b>	<b>1,242,614</b>	<b>2.5</b>	<b>6,800,002</b>	<b>13.9</b>	<b>10,885,841</b>	<b>22.2</b>	<b>10,349,970</b>	<b>21.1</b>	<b>49,016,070</b>	<b>100.0</b>



**PA Public School Employees' Retirement Sys**  
**Asset Allocation**  
 Total Public Market Composite  
 Quarter Ended 6/30/13

Manager Name	Equity		Bonds		Cash		Intl Equity		Intl Bonds		Real Estate		Special Invest		Other		As Allocated To Manager	
	\$(000)	%	\$(000)	%	\$(000)	%	\$(000)	%	\$(000)	%	\$(000)	%	\$(000)	%	\$(000)	%	\$(000)	%
US Equity x-E/M Composite	3,956,798	12.5	0	0.0	256,959	0.8	0	0.0	0	0.0	0	0.0	0	0.0	0	0.0	4,213,757	13.4
E/M US Equity Composite	168,873	0.5	0	0.0	6,174	0.0	0	0.0	0	0.0	0	0.0	0	0.0	0	0.0	175,046	0.6
<b>Managed Equity</b>	<b>4,125,670</b>	<b>13.1</b>	<b>0</b>	<b>0.0</b>	<b>263,133</b>	<b>0.8</b>	<b>0</b>	<b>0.0</b>	<b>0</b>	<b>0.0</b>	<b>0</b>	<b>0.0</b>	<b>0</b>	<b>0.0</b>	<b>0</b>	<b>0.0</b>	<b>4,388,803</b>	<b>13.9</b>
US Fixed Income x-E/M Composite	0	0.0	7,820,076	24.8	13,739	0.0	0	0.0	0	0.0	0	0.0	0	0.0	0	0.0	7,833,814	24.8
E/M US Core Plus FI Composite	0	0.0	138,023	0.4	1,990	0.0	0	0.0	0	0.0	0	0.0	0	0.0	0	0.0	140,014	0.4
PIMCO Multi-Sector Strategy	0	0.0	850,403	2.7	0	0.0	0	0.0	0	0.0	0	0.0	0	0.0	0	0.0	850,403	2.7
<b>Managed Fixed</b>	<b>0</b>	<b>0.0</b>	<b>8,808,502</b>	<b>27.9</b>	<b>15,729</b>	<b>0.0</b>	<b>0</b>	<b>0.0</b>	<b>0</b>	<b>0.0</b>	<b>0</b>	<b>0.0</b>	<b>0</b>	<b>0.0</b>	<b>0</b>	<b>0.0</b>	<b>8,824,231</b>	<b>28.0</b>
Unallocated Cash & Cash Equivalents	0	0.0	0	0.0	1,607,026	5.1	0	0.0	0	0.0	0	0.0	0	0.0	0	0.0	1,607,026	5.1
<b>Unallocated STIF/Dreyfus</b>	<b>0</b>	<b>0.0</b>	<b>0</b>	<b>0.0</b>	<b>1,607,026</b>	<b>5.1</b>	<b>0</b>	<b>0.0</b>	<b>0</b>	<b>0.0</b>	<b>0</b>	<b>0.0</b>	<b>0</b>	<b>0.0</b>	<b>0</b>	<b>0.0</b>	<b>1,607,026</b>	<b>5.1</b>
Non-U.S. Equity x-E/M Composite	0	0.0	0	0.0	121,910	0.4	4,695,495	14.9	0	0.0	0	0.0	0	0.0	0	0.0	4,817,405	15.3
E/M Non-US Equity Composite	0	0.0	0	0.0	794	0.0	99,384	0.3	0	0.0	0	0.0	0	0.0	0	0.0	100,178	0.3
<b>Int'l Equity</b>	<b>0</b>	<b>0.0</b>	<b>0</b>	<b>0.0</b>	<b>122,704</b>	<b>0.4</b>	<b>4,794,879</b>	<b>15.2</b>	<b>0</b>	<b>0.0</b>	<b>0</b>	<b>0.0</b>	<b>0</b>	<b>0.0</b>	<b>0</b>	<b>0.0</b>	<b>4,917,584</b>	<b>15.6</b>
Global Fixed Income Comp	0	0.0	0	0.0	92,728	0.3	0	0.0	1,149,886	3.6	0	0.0	0	0.0	0	0.0	1,242,614	3.9
<b>Global Fixed Income</b>	<b>0</b>	<b>0.0</b>	<b>0</b>	<b>0.0</b>	<b>92,728</b>	<b>0.3</b>	<b>0</b>	<b>0.0</b>	<b>1,149,886</b>	<b>3.6</b>	<b>0</b>	<b>0.0</b>	<b>0</b>	<b>0.0</b>	<b>0</b>	<b>0.0</b>	<b>1,242,614</b>	<b>3.9</b>
PTRES Composite	202,239	0.6	0	0.0	0	0.0	0	0.0	0	0.0	0	0.0	0	0.0	0	0.0	202,239	0.6
<b>Real Estate</b>	<b>202,239</b>	<b>0.6</b>	<b>0</b>	<b>0.0</b>	<b>0</b>	<b>0.0</b>	<b>0</b>	<b>0.0</b>	<b>0</b>	<b>0.0</b>	<b>0</b>	<b>0.0</b>	<b>0</b>	<b>0.0</b>	<b>0</b>	<b>0.0</b>	<b>202,239</b>	<b>0.6</b>
Miscellaneous Composite	477	0.0	31	0.0	0	0.0	0	0.0	0	0.0	0	0.0	0	0.0	0	0.0	508	0.0
Non-Core STIF	0	0.0	0	0.0	0	0.0	0	0.0	0	0.0	0	0.0	0	0.0	0	0.0	0	0.0
Commodities Composite	1,224,279	3.9	0	0.0	620,034	2.0	0	0.0	0	0.0	0	0.0	0	0.0	0	0.0	1,844,313	5.8
Total Absolute Return Composite	4,807,010	15.2	0	0.0	420,682	1.3	122,392	0.4	0	0.0	0	0.0	0	0.0	323,791	1.0	5,673,875	18.0
MLP Composite	1,447,433	4.6	0	0.0	33,155	0.1	0	0.0	0	0.0	0	0.0	0	0.0	0	0.0	1,480,588	4.7
Risk Parity Composite	0	0.0	0	0.0	50,242	0.2	0	0.0	0	0.0	0	0.0	0	0.0	1,300,443	4.1	1,350,685	4.3
<b>Other</b>	<b>7,479,200</b>	<b>23.7</b>	<b>31</b>	<b>0.0</b>	<b>1,124,114</b>	<b>3.6</b>	<b>122,392</b>	<b>0.4</b>	<b>0</b>	<b>0.0</b>	<b>0</b>	<b>0.0</b>	<b>0</b>	<b>0.0</b>	<b>1,624,234</b>	<b>5.2</b>	<b>10,349,970</b>	<b>32.8</b>
<b>As Invested by Managers</b>	<b>11,807,109</b>	<b>37.4</b>	<b>8,808,533</b>	<b>27.9</b>	<b>3,225,433</b>	<b>10.2</b>	<b>4,917,271</b>	<b>15.6</b>	<b>1,149,886</b>	<b>3.6</b>	<b>0</b>	<b>0.0</b>	<b>0</b>	<b>0.0</b>	<b>1,624,234</b>	<b>5.2</b>	<b>31,532,466</b>	<b>100.0</b>
<b>As Allocated to Managers</b>	<b>4,388,803</b>	<b>13.9</b>	<b>8,824,231</b>	<b>28.0</b>	<b>1,607,026</b>	<b>5.1</b>	<b>4,917,584</b>	<b>15.6</b>	<b>1,242,614</b>	<b>3.9</b>	<b>202,239</b>	<b>0.6</b>	<b>0</b>	<b>0.0</b>	<b>10,349,970</b>	<b>32.8</b>	<b>31,532,466</b>	<b>100.0</b>



PA Public School Employees' Retirement Sys  
 Asset Allocation  
 PSERS Total Fund  
 Quarter Ended 6/30/13

Manager Name	Equity		Bonds		Cash		Intl Equity		Intl Bonds		Real Estate		Special Invest		Other		As Allocated To Manager	
	\$(000)	%	\$(000)	%	\$(000)	%	\$(000)	%	\$(000)	%	\$(000)	%	\$(000)	%	\$(000)	%	\$(000)	%
PSERS - Misc - Equity	5,613	0.0	0	0.0	818	0.0	0	0.0	0	0.0	0	0.0	0	0.0	0	0.0	6,431	0.0
PSERS S&P 500 Index Fund	3,363,035	6.9	0	0.0	194,409	0.4	0	0.0	0	0.0	0	0.0	0	0.0	0	0.0	3,557,444	7.3
PSERS S&P 600 Index Fund	2	0.0	0	0.0	0	0.0	0	0.0	0	0.0	0	0.0	0	0.0	0	0.0	2	0.0
PSERS JP Morgan 600 Swap	55,951	0.1	0	0.0	0	0.0	0	0.0	0	0.0	0	0.0	0	0.0	0	0.0	55,951	0.1
PSERS JP Morgan 600 Swap II	150,010	0.3	0	0.0	12	0.0	0	0.0	0	0.0	0	0.0	0	0.0	0	0.0	150,022	0.3
PSERS S&P 400 Index Fund	197,723	0.4	0	0.0	1,949	0.0	0	0.0	0	0.0	0	0.0	0	0.0	0	0.0	199,672	0.4
First Pacific Advisors, Inc.	130,462	0.3	0	0.0	59,035	0.1	0	0.0	0	0.0	0	0.0	0	0.0	0	0.0	189,497	0.4
NorthPointe Capital, LLC	54,002	0.1	0	0.0	736	0.0	0	0.0	0	0.0	0	0.0	0	0.0	0	0.0	54,738	0.1
AH Lisanti	55,738	0.1	0	0.0	1,915	0.0	0	0.0	0	0.0	0	0.0	0	0.0	0	0.0	57,653	0.1
Conestoga Capital Advisors	56,964	0.1	0	0.0	2,523	0.0	0	0.0	0	0.0	0	0.0	0	0.0	0	0.0	59,487	0.1
Opus Capital Management	56,170	0.1	0	0.0	1,736	0.0	0	0.0	0	0.0	0	0.0	0	0.0	0	0.0	57,907	0.1
<b>Managed Equity</b>	<b>4,125,670</b>	<b>8.4</b>	<b>0</b>	<b>0.0</b>	<b>263,133</b>	<b>0.5</b>	<b>0</b>	<b>0.0</b>	<b>0</b>	<b>0.0</b>	<b>0</b>	<b>0.0</b>	<b>0</b>	<b>0.0</b>	<b>0</b>	<b>0.0</b>	<b>4,388,803</b>	<b>9.0</b>
PSERS Fixed Liquidation	0	0.0	1,942	0.0	-24	-0.0	0	0.0	0	0.0	0	0.0	0	0.0	0	0.0	1,918	0.0
Bridgewater TIPS	0	0.0	1,488,335	3.0	-15,401	-0.0	0	0.0	0	0.0	0	0.0	0	0.0	0	0.0	1,472,934	3.0
PSERS TIPS (unlevered)	0	0.0	991,192	2.0	12,033	0.0	0	0.0	0	0.0	0	0.0	0	0.0	0	0.0	1,003,224	2.0
PSERS TIPS (cash)	0	0.0	279,438	0.6	19,429	0.0	0	0.0	0	0.0	0	0.0	0	0.0	0	0.0	298,867	0.6
Black River Inflation Opp. Fund	0	0.0	86,888	0.2	0	0.0	0	0.0	0	0.0	0	0.0	0	0.0	0	0.0	86,888	0.2
Black River Inflation Opp. Fund CI B	0	0.0	176,860	0.4	0	0.0	0	0.0	0	0.0	0	0.0	0	0.0	0	0.0	176,860	0.4
Apollo European Principle Fund II	0	0.0	29,899	0.1	0	0.0	0	0.0	0	0.0	0	0.0	0	0.0	0	0.0	29,899	0.1
Brevan Howard CMBS Fund	0	0.0	98,735	0.2	0	0.0	0	0.0	0	0.0	0	0.0	0	0.0	0	0.0	98,735	0.2
Carlyle Emerging Mezz. Opp. Fund LP	0	0.0	73,010	0.1	0	0.0	0	0.0	0	0.0	0	0.0	0	0.0	0	0.0	73,010	0.1
Hayfin Special Opp. Credit	0	0.0	28,747	0.1	0	0.0	0	0.0	0	0.0	0	0.0	0	0.0	0	0.0	28,747	0.1
Mackay Shields	0	0.0	310,788	0.6	8,765	0.0	0	0.0	0	0.0	0	0.0	0	0.0	0	0.0	319,553	0.7
Sankaty Credit Opp. Fund V-A	0	0.0	55,007	0.1	0	0.0	0	0.0	0	0.0	0	0.0	0	0.0	0	0.0	55,007	0.1
TOP NPL (A)	0	0.0	70,802	0.1	0	0.0	0	0.0	0	0.0	0	0.0	0	0.0	0	0.0	70,802	0.1
TPG Opp Partners II	0	0.0	63,063	0.1	0	0.0	0	0.0	0	0.0	0	0.0	0	0.0	0	0.0	63,063	0.1
BlackRock Mortgage Investors	0	0.0	417,318	0.9	0	0.0	0	0.0	0	0.0	0	0.0	0	0.0	0	0.0	417,318	0.9
Brigade Distressed Value	0	0.0	114,677	0.2	0	0.0	0	0.0	0	0.0	0	0.0	0	0.0	0	0.0	114,677	0.2
Cerberus Levered Loan Fund I	0	0.0	109,050	0.2	0	0.0	0	0.0	0	0.0	0	0.0	0	0.0	0	0.0	109,050	0.2
Cerberus Levered Loan Fund II	0	0.0	84,473	0.2	0	0.0	0	0.0	0	0.0	0	0.0	0	0.0	0	0.0	84,473	0.2
ICG Europe Fund	0	0.0	62,491	0.1	0	0.0	0	0.0	0	0.0	0	0.0	0	0.0	0	0.0	62,491	0.1
LBC Credit Partners	0	0.0	161,095	0.3	0	0.0	0	0.0	0	0.0	0	0.0	0	0.0	0	0.0	161,095	0.3
LBC Credit Partners III	0	0.0	29,239	0.1	0	0.0	0	0.0	0	0.0	0	0.0	0	0.0	0	0.0	29,239	0.1



PA Public School Employees' Retirement Sys  
 Asset Allocation  
 PSERS Total Fund  
 Quarter Ended 6/30/13

Manager Name	Equity		Bonds		Cash		Intl Equity		Intl Bonds		Real Estate		Special Invest		Other		As Allocated To Manager	
	\$(000)	%	\$(000)	%	\$(000)	%	\$(000)	%	\$(000)	%	\$(000)	%	\$(000)	%	\$(000)	%	\$(000)	%
Mariner/Galton RMBS	0	0.0	213,613	0.4	51,365	0.1	0.0	0.0	0.0	0.0	0.0	0.0	0.0	0.0	0.0	0.0	264,977	0.5
Oaktree Loan Fund 2X, LP	0	0.0	25,114	0.1	0	0.0	0.0	0.0	0.0	0.0	0.0	0.0	0.0	0.0	0.0	0.0	25,114	0.1
Sankaty Credit Oppt. Fund IV	0	0.0	213,232	0.4	0	0.0	0.0	0.0	0.0	0.0	0.0	0.0	0.0	0.0	0.0	0.0	213,232	0.4
Sankaty Advisors Bank Loans	0	0.0	384,392	0.8	0	0.0	0.0	0.0	0.0	0.0	0.0	0.0	0.0	0.0	0.0	0.0	384,392	0.8
Sankaty Middle Market Fund	0	0.0	139,889	0.3	0	0.0	0.0	0.0	0.0	0.0	0.0	0.0	0.0	0.0	0.0	0.0	139,889	0.3
PSERS U.S. Long Treasuries	0	0.0	0	0.0	38,880	0.1	0.0	0.0	0.0	0.0	0.0	0.0	0.0	0.0	0.0	0.0	38,880	0.1
BlackRock Global Alpha	0	0.0	613,045	1.3	0	0.0	0.0	0.0	0.0	0.0	0.0	0.0	0.0	0.0	0.0	0.0	613,045	1.3
PSERS Active	0	0.0	1,234,662	2.5	-94,420	-0.2	0.0	0.0	0.0	0.0	0.0	0.0	0.0	0.0	0.0	0.0	1,140,242	2.3
Western Asset Management	0	0.0	263,081	0.5	-6,887	-0.0	0.0	0.0	0.0	0.0	0.0	0.0	0.0	0.0	0.0	0.0	256,193	0.5
Piedmont Inv. Advisors	0	0.0	50,454	0.1	483	0.0	0.0	0.0	0.0	0.0	0.0	0.0	0.0	0.0	0.0	0.0	50,937	0.1
Pugh Capital Management	0	0.0	87,569	0.2	1,508	0.0	0.0	0.0	0.0	0.0	0.0	0.0	0.0	0.0	0.0	0.0	89,077	0.2
PIMCO Multi-Sector Strategy	0	0.0	850,403	1.7	0	0.0	0.0	0.0	0.0	0.0	0.0	0.0	0.0	0.0	0.0	0.0	850,403	1.7
<b>Managed Fixed</b>	<b>0</b>	<b>0.0</b>	<b>8,808,502</b>	<b>18.0</b>	<b>15,729</b>	<b>0.0</b>	<b>0.0</b>	<b>0.0</b>	<b>0.0</b>	<b>0.0</b>	<b>0.0</b>	<b>0.0</b>	<b>0.0</b>	<b>0.0</b>	<b>0.0</b>	<b>0.0</b>	<b>8,824,231</b>	<b>18.0</b>
AQR GRP EL 20 Offshore Fund	0	0.0	0	0.0	0	0.0	0.0	0.0	0.0	0.0	0.0	0.0	0.0	0.0	0.0	0.0	280,751	0.6
Bridgewater All Weather @15	0	0.0	0	0.0	0	0.0	0.0	0.0	0.0	0.0	0.0	0.0	0.0	0.0	0.0	0.0	984,384	2.0
PSERS Optimal Liquid Beta	0	0.0	0	0.0	50,242	0.1	0.0	0.0	0.0	0.0	0.0	0.0	0.0	0.0	0.0	0.0	35,307	0.1
<b>Risk Parity</b>	<b>0</b>	<b>0.0</b>	<b>0</b>	<b>0.0</b>	<b>50,242</b>	<b>0.1</b>	<b>0.0</b>	<b>0.0</b>	<b>0.0</b>	<b>0.0</b>	<b>0.0</b>	<b>0.0</b>	<b>0.0</b>	<b>0.0</b>	<b>0.0</b>	<b>0.0</b>	<b>1,300,685</b>	<b>2.8</b>
PSERS Cash Management	0	0.0	0	0.0	1,543,642	3.1	0.0	0.0	0.0	0.0	0.0	0.0	0.0	0.0	0.0	0.0	1,543,642	3.1
PSERS Cash Management Sub	0	0.0	0	0.0	63,384	0.1	0.0	0.0	0.0	0.0	0.0	0.0	0.0	0.0	0.0	0.0	63,384	0.1
<b>Unallocated STIF/Dreyfus</b>	<b>0</b>	<b>0.0</b>	<b>0</b>	<b>0.0</b>	<b>1,607,026</b>	<b>3.3</b>	<b>0.0</b>	<b>0.0</b>	<b>0.0</b>	<b>0.0</b>	<b>0.0</b>	<b>0.0</b>	<b>0.0</b>	<b>0.0</b>	<b>0.0</b>	<b>0.0</b>	<b>1,607,026</b>	<b>3.3</b>
Pareto	0	0.0	0	0.0	0	0.0	4,138	0.0	0.0	0.0	0.0	0.0	0.0	0.0	0.0	0.0	4,138	0.0
Wasatch EM Small Cap	0	0.0	0	0.0	4,231	0.0	289,663	0.6	0.0	0.0	0.0	0.0	0.0	0.0	0.0	0.0	293,894	0.6
Westwood Global	0	0.0	0	0.0	1,761	0.0	67,352	0.1	0.0	0.0	0.0	0.0	0.0	0.0	0.0	0.0	69,113	0.1
PSERS ACWI x US	0	0.0	0	0.0	1,740	0.0	1,745,214	3.6	0.0	0.0	0.0	0.0	0.0	0.0	0.0	0.0	1,746,954	3.6
PSERS France Swaps	0	0.0	0	0.0	0	0.0	143,007	0.3	0.0	0.0	0.0	0.0	0.0	0.0	0.0	0.0	143,007	0.3
PSERS JP Morgan Swaps	0	0.0	0	0.0	0	0.0	43,147	0.1	0.0	0.0	0.0	0.0	0.0	0.0	0.0	0.0	43,147	0.1
PSERS JP Morgan Swaps III	0	0.0	0	0.0	0	0.0	117,258	0.2	0.0	0.0	0.0	0.0	0.0	0.0	0.0	0.0	117,258	0.2
PSERS JP Swap 4	0	0.0	0	0.0	0	0.0	70,197	0.1	0.0	0.0	0.0	0.0	0.0	0.0	0.0	0.0	70,197	0.1
PSERS JP Swap 5	0	0.0	0	0.0	0	0.0	22,814	0.0	0.0	0.0	0.0	0.0	0.0	0.0	0.0	0.0	22,814	0.0
BTC - Pan Europe	0	0.0	0	0.0	25,960	0.1	48,912	0.1	0.0	0.0	0.0	0.0	0.0	0.0	0.0	0.0	74,873	0.2
BTC - Japan	0	0.0	0	0.0	446	0.0	0	0.0	0.0	0.0	0.0	0.0	0.0	0.0	0.0	0.0	446	0.0



PA Public School Employees' Retirement Sys  
 Asset Allocation  
 PSERS Total Fund  
 Quarter Ended 6/30/13

Manager Name	Equity		Bonds		Cash		Intl Equity		Intl Bonds		Real Estate		Special Invest		Other		As Allocated To Manager	
	\$(000)	%	\$(000)	%	\$(000)	%	\$(000)	%	\$(000)	%	\$(000)	%	\$(000)	%	\$(000)	%	\$(000)	%
BTC - Canada	0	0.0	0	0.0	0	0.0	0	0.0	11,573	0.0	0	0.0	0	0.0	0	0.0	11,573	0.0
BTC - Pacific Rim Ex-Japan	0	0.0	0	0.0	1,334	0.0	13,732	0.0	0	0.0	0	0.0	0	0.0	0	0.0	15,066	0.0
BTC - UBS	0	0.0	0	0.0	0	0.0	-2,013	-0.0	0	0.0	0	0.0	0	0.0	0	0.0	-2,013	-0.0
BTC - UBS Japan CFD	0	0.0	0	0.0	0	0.0	24,407	0.0	0	0.0	0	0.0	0	0.0	0	0.0	24,407	0.0
BTC - Alpha Advantage Emerging	0	0.0	0	0.0	0	0.0	98,121	0.2	0	0.0	0	0.0	0	0.0	0	0.0	98,121	0.2
BTC - 32 Cap Ltd.	0	0.0	0	0.0	0	0.0	166,983	0.3	0	0.0	0	0.0	0	0.0	0	0.0	166,983	0.3
BTC - Global Ex-US Equity	0	0.0	0	0.0	0	0.0	-284	-0.0	0	0.0	0	0.0	0	0.0	0	0.0	-284	-0.0
BTC - Active Currency Overlay	0	0.0	0	0.0	0	0.0	-1,964	-0.0	0	0.0	0	0.0	0	0.0	0	0.0	-1,964	-0.0
BTC - Money Market EBT	0	0.0	0	0.0	42,568	0.1	0	0.0	0	0.0	0	0.0	0	0.0	0	0.0	42,568	0.1
Baillie Gifford	0	0.0	0	0.0	9,547	0.0	471,349	1.0	0	0.0	0	0.0	0	0.0	0	0.0	480,895	1.0
Marathon Asset Mgmt.	0	0.0	0	0.0	11,676	0.0	494,930	1.0	0	0.0	0	0.0	0	0.0	0	0.0	506,606	1.0
Acadian Asset Mgmt	0	0.0	0	0.0	1,993	0.0	159,206	0.3	0	0.0	0	0.0	0	0.0	0	0.0	161,199	0.3
Batterymarch Int'l Sm Cap	0	0.0	0	0.0	1,878	0.0	63,179	0.1	0	0.0	0	0.0	0	0.0	0	0.0	65,057	0.1
Oberweis Asset Mgmt	0	0.0	0	0.0	10,019	0.0	104,734	0.2	0	0.0	0	0.0	0	0.0	0	0.0	114,752	0.2
Pyramis	0	0.0	0	0.0	2,144	0.0	118,982	0.2	0	0.0	0	0.0	0	0.0	0	0.0	121,126	0.2
Wasatch Advisors	0	0.0	0	0.0	6,270	0.0	187,958	0.4	0	0.0	0	0.0	0	0.0	0	0.0	194,228	0.4
PSERS Emerging Markets Fund	0	0.0	0	0.0	344	0.0	232,901	0.5	0	0.0	0	0.0	0	0.0	0	0.0	233,245	0.5
Glovisia	0	0.0	0	0.0	259	0.0	28,036	0.1	0	0.0	0	0.0	0	0.0	0	0.0	28,294	0.1
John Hsu Capital	0	0.0	0	0.0	535	0.0	56,461	0.1	0	0.0	0	0.0	0	0.0	0	0.0	56,997	0.1
Shah Capital Management	0	0.0	0	0.0	0	0.0	14,887	0.0	0	0.0	0	0.0	0	0.0	0	0.0	14,887	0.0
<b>Int'l Equity</b>	<b>0</b>	<b>0.0</b>	<b>0</b>	<b>0.0</b>	<b>122,704</b>	<b>0.3</b>	<b>4,794,879</b>	<b>9.8</b>	<b>0</b>	<b>0.0</b>	<b>0</b>	<b>0.0</b>	<b>0</b>	<b>0.0</b>	<b>0</b>	<b>0.0</b>	<b>4,917,584</b>	<b>10.0</b>
Alliance Bernstein Global Fixed	0	0.0	0	0.0	1	0.0	0	0.0	287,422	0.6	0	0.0	0	0.0	0	0.0	287,423	0.6
Strategic Fixed Income LLC	0	0.0	0	0.0	17,634	0.0	0	0.0	125,116	0.3	0	0.0	0	0.0	0	0.0	142,750	0.3
Franklin Templeton	0	0.0	0	0.0	54,838	0.1	0	0.0	368,700	0.8	0	0.0	0	0.0	0	0.0	423,539	0.9
Stone Harbor	0	0.0	0	0.0	20,254	0.0	0	0.0	368,648	0.8	0	0.0	0	0.0	0	0.0	388,902	0.8
<b>Global Fixed Income</b>	<b>0</b>	<b>0.0</b>	<b>0</b>	<b>0.0</b>	<b>92,728</b>	<b>0.2</b>	<b>0</b>	<b>0.0</b>	<b>1,149,886</b>	<b>2.3</b>	<b>0</b>	<b>0.0</b>	<b>0</b>	<b>0.0</b>	<b>0</b>	<b>0.0</b>	<b>1,242,614</b>	<b>2.5</b>
Private Real Estate Composite	0	0.0	0	0.0	0	0.0	0	0.0	0	0.0	6,597,762	13.5	0	0.0	0	0.0	6,597,762	13.5
PTRES Composite	202,239	0.4	0	0.0	0	0.0	0	0.0	0	0.0	0	0.0	0	0.0	0	0.0	202,239	0.4
<b>Real Estate</b>	<b>202,239</b>	<b>0.4</b>	<b>0</b>	<b>0.0</b>	<b>0</b>	<b>0.0</b>	<b>0</b>	<b>0.0</b>	<b>0</b>	<b>0.0</b>	<b>6,597,762</b>	<b>13.5</b>	<b>0</b>	<b>0.0</b>	<b>0</b>	<b>0.0</b>	<b>6,800,002</b>	<b>13.9</b>
Managed Stock Distribution	17,974	0.0	0	0.0	0	0.0	0	0.0	0	0.0	0	0.0	0	0.0	0	0.0	17,974	0.0
Private Equity Composite	0	0.0	0	0.0	0	0.0	0	0.0	0	0.0	8,488,478	17.3	0	0.0	0	0.0	8,488,478	17.3



PA Public School Employees' Retirement Sys  
 Asset Allocation  
 PSERS Total Fund  
 Quarter Ended 6/30/13

Manager Name	Equity		Bonds		Cash		Intl Equity		Intl Bonds		Real Estate		Special Invest		Other		As Allocated To Manager		
	\$(000)	%	\$(000)	%	\$(000)	%	\$(000)	%	\$(000)	%	\$(000)	%	\$(000)	%	\$(000)	%	\$(000)	%	
Private Debt Composite		0.0		0.0		0.0		0.0		0.0		0.0		1,496,041	3.1			1,496,041	3.1
Venture Capital Composite		0.0		0.0		0.0		0.0		0.0		0.0		835,627	1.7			835,627	1.7
Internally Managed Composite		0.0		0.0		0.0		0.0		0.0		0.0		47,722	0.1			47,722	0.1
<b>Special Investments</b>	17,974	<b>0.0</b>	0	<b>0.0</b>	0	<b>0.0</b>	0	<b>0.0</b>	0	<b>0.0</b>	0	<b>0.0</b>		10,867,867	<b>22.2</b>	0		10,885,841	<b>22.2</b>
Black River Global Agriculture	156,624	0.3	0	0.0	0	0.0	0	0.0	0	0.0	0	0.0			0.0			156,624	0.3
Black River Global Ag. Fund STIF	0	0.0	0	0.0	42,002	0.1		0.0		0.0		0.0			0.0			42,002	0.1
Black River Global Ag. Swap	-9,626	-0.0	0	0.0	0	0.0		0.0		0.0		0.0			0.0			-9,626	-0.0
Credit Suisse	214,914	0.4	0	0.0	59,108	0.1		0.0		0.0		0.0			0.0			274,022	0.6
DB Advisors	3,702	0.0	0	0.0	354	0.0		0.0		0.0		0.0			0.0			4,055	0.0
Gresham	381,317	0.8	0	0.0	69,641	0.1		0.0		0.0		0.0			0.0			450,958	0.9
PSERS Gold Fund	-56,202	-0.1	0	0.0	26,507	0.1		0.0		0.0		0.0			0.0			-29,696	-0.1
Schroders Investment Management	22,942	0.0	0	0.0	408,841	0.8		0.0		0.0		0.0			0.0			431,782	0.9
Wellington Management Company	510,609	1.0	0	0.0	13,583	0.0		0.0		0.0		0.0			0.0			524,191	1.1
<b>Commodities</b>	1,224,279	<b>2.5</b>	0	<b>0.0</b>	620,034	<b>1.3</b>		<b>0.0</b>	0	<b>0.0</b>	0	<b>0.0</b>		0	<b>0.0</b>	0		1,844,313	<b>3.8</b>
AQR Offshore Multi-Strategy Fund	436,428	0.9		0.0	0	0.0		0.0		0.0		0.0			0.0			436,428	0.9
Aeolus Property Catastrophe Fund	254,299	0.5		0.0	0	0.0		0.0		0.0		0.0			0.0			254,299	0.5
Black River Fixed Income Rel Value Opp	0	0.0		0.0	0	0.0		0.0		0.0		0.0			0.0	274,773		274,773	0.6
BlackRock Capital Structure Inv Fund	261,836	0.5		0.0	0	0.0		0.0		0.0		0.0			0.0			261,836	0.5
Blue Trend Fund Limited	219,341	0.4		0.0	0	0.0		0.0		0.0		0.0			0.0			219,341	0.4
Brevan Howard Fund Limited		0.0		0.0	420,682	0.9		0.0		0.0		0.0			0.0			420,682	0.9
Bridgewater Pure Alpha Fund II	848,318	1.7		0.0	0	0.0		0.0		0.0		0.0			0.0			848,318	1.7
Brigade Leveraged Capital Structures	725,962	1.5	0	0.0	0	0.0		0.0		0.0		0.0			0.0			725,962	1.5
Capula Tail Risk Fund	354,701	0.7	0	0.0	0	0.0		0.0		0.0		0.0			0.0			354,701	0.7
Capula Global Relative Value Fund	221,768	0.5		0.0	0	0.0		0.0		0.0		0.0			0.0			221,768	0.5
Ellis Lake Domestic Fund	100,015	0.2		0.0	0	0.0		0.0		0.0		0.0			0.0			100,015	0.2
Lazard Emerging Income Plus	222,571	0.5		0.0	0	0.0		122,392	0.2	0.0		0.0			0.0			122,392	0.2
Caspian Select Credit Intl.		0.0		0.0	0	0.0		0.0		0.0		0.0			0.0			222,571	0.5
Nephila/Palmetto Fund	284,600	0.6	0	0.0	0	0.0		0.0		0.0		0.0			0.0			284,600	0.6
PIMCO PARS/GCOF/MAV Composite	684,309	1.4	0	0.0	0	0.0		0.0		0.0		0.0			0.0			684,309	1.4
Robeco Transrend Diversified Fund	192,862	0.4		0.0	0	0.0		0.0		0.0		0.0			0.0			192,862	0.4
Apollo/Sciens Aviation Fund II	0	0.0		0.0	0	0.0		0.0		0.0		0.0			0.0	49,018		49,018	0.1
<b>Absolute Return</b>	<b>4,807,010</b>	<b>9.8</b>	<b>0</b>	<b>0.0</b>	<b>420,682</b>	<b>0.9</b>		<b>122,392</b>	<b>0.2</b>	<b>0</b>	<b>0.0</b>	<b>0</b>		<b>0</b>	<b>0.0</b>	<b>323,791</b>		<b>5,673,875</b>	<b>11.6</b>



**PA Public School Employees' Retirement Sys**  
**Asset Allocation**  
**PSERS Total Fund**  
**Quarter Ended 6/30/13**

Manager Name	Equity		Bonds		Cash		Intl Equity		Intl Bonds		Real Estate		Special Invest		Other		As Allocated To Manager		
	\$(000)	%	\$(000)	%	\$(000)	%	\$(000)	%	\$(000)	%	\$(000)	%	\$(000)	%	\$(000)	%	\$(000)	%	
Non-Core STIF		0.0		0.0		0.0		0.0		0.0		0.0		0.0		0.0		0	0.0
Miscellaneous Composite	477	0.0	31	0.0	0	0.0	0	0.0	0	0.0	0	0.0	0	0.0	0	0.0	508	0.0	
Other	477	0.0	31	0.0	0	0.0	0	0.0	0	0.0	0	0.0	0	0.0	0	0.0	508	0.0	
Harvest MLP Alpha	573,469	1.2	0	0.0	2,279	0.0	0	0.0	0	0.0	0	0.0	0	0.0	0	0.0	575,748	1.2	
Harvest Enhanced Index	6,499	0.0	0	0.0	106	0.0	0	0.0	0	0.0	0	0.0	0	0.0	0	0.0	6,604	0.0	
Salient Capital Partners	479,624	1.0	0	0.0	5,132	0.0	0	0.0	0	0.0	0	0.0	0	0.0	0	0.0	484,756	1.0	
Atlantic Trust Private Wealth Mgmt	387,842	0.8	0	0.0	25,639	0.1	0	0.0	0	0.0	0	0.0	0	0.0	0	0.0	413,481	0.8	
Managed MLP	1,447,433	3.0	0	0.0	33,155	0.1	0	0.0	0	0.0	0	0.0	0	0.0	0	0.0	1,480,588	3.0	
<b>As Invested by Managers</b>	<b>11,825,083</b>	<b>24.1</b>	<b>8,808,533</b>	<b>18.0</b>	<b>3,225,433</b>	<b>6.6</b>	<b>4,917,271</b>	<b>10.0</b>	<b>1,149,886</b>	<b>2.3</b>	<b>6,597,762</b>	<b>13.5</b>	<b>10,867,867</b>	<b>22.2</b>	<b>1,624,234</b>	<b>3.3</b>	<b>49,016,070</b>	<b>100.0</b>	
<b>As Allocated to Managers</b>	<b>5,869,392</b>	<b>12.0</b>	<b>8,824,231</b>	<b>18.0</b>	<b>1,607,026</b>	<b>3.3</b>	<b>4,917,584</b>	<b>10.0</b>	<b>1,242,614</b>	<b>2.5</b>	<b>6,800,002</b>	<b>13.9</b>	<b>10,885,841</b>	<b>22.2</b>	<b>8,869,382</b>	<b>18.1</b>	<b>49,016,070</b>	<b>100.0</b>	



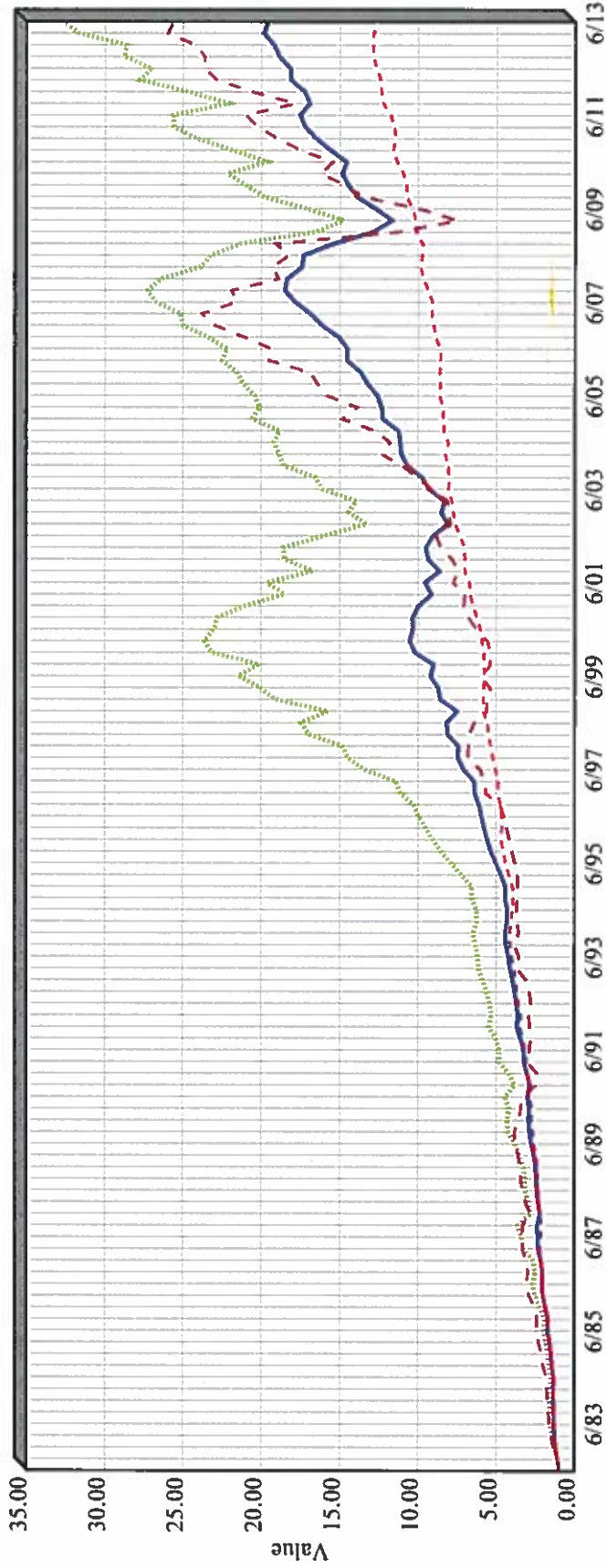
**PA Public School Employees' Retirement Sys**  
**Asset Allocation**  
**PSERS Healthcare & HOP**  
**Quarter Ended 6/30/13**

Manager Name	Equity		Bonds		Cash		Intl Equity		Intl Bonds		Real Estate		Special Invest		Other		As Allocated To Manager	
	\$(000)	%	\$(000)	%	\$(000)	%	\$(000)	%	\$(000)	%	\$(000)	%	\$(000)	%	\$(000)	%	\$(000)	%
PSERS Healthcare - Premium Assist		0.0	19,662	18.1	340	0.3	0.0	0.0	0.0	0.0	0.0	0.0	0.0	0.0	0.0	0.0	20,002	18.4
PSERS Healthcare - HOP	0	0.0		0.0	88,451	81.6	0.0	0.0	0.0	0.0	0.0	0.0	0.0	0.0	0.0	0.0	88,451	81.6
PSERS Healthcare & HOP	0	0.0	19,662	18.1	88,791	81.9	0	0.0	0	0.0	0	0.0	0	0.0	0	0.0	108,453	100.0
<b>As Invested by Managers</b>	<b>0</b>	<b>0</b>	<b>19,662</b>	<b>18.1</b>	<b>88,791</b>	<b>81.9</b>	<b>0</b>	<b>0</b>	<b>0</b>	<b>0</b>	<b>0</b>	<b>0</b>	<b>0</b>	<b>0</b>	<b>0</b>	<b>0</b>	<b>108,453</b>	<b>100.0</b>
<b>As Allocated to Managers</b>	<b>0</b>	<b>0</b>	<b>0</b>	<b>0</b>	<b>0</b>	<b>0</b>	<b>0</b>	<b>0</b>	<b>0</b>	<b>0</b>	<b>0</b>	<b>0</b>	<b>0</b>	<b>0</b>	<b>108,453</b>	<b>100.0</b>	<b>108,453</b>	<b>100.0</b>





PA Public School Employees' Retirement Sys  
 Growth of One Dollar  
 PSERS Total Fund  
 Quarter Ended 6/30/3



	Legend	Return		\$ Value
		3 Years	Inception 6/30/82	
Total	—	10.36	10.08	19.62
S&P 500 (Official)	.....	18.44	11.90	32.61
Barclays Aggregate	- - -	3.51	8.50	12.54
Wilshire Real Est. Secs	- . -	18.30	11.03	25.64



PA Public School Employees' Retirement Sys  
 Sources of Fund Growth  
 PSERS Total Fund  
 Quarter Ended 6/30/13

Manager Name	Beginning Value \$(000)	Net Contrib \$(000)	Distrib & Adm Fees \$(000)	Invest Fees \$(000)	Invest Gain/Loss \$(000)	Ending Value \$(000)	Time Wtd Return (%)
PSERS - Misc - Equity	6,565	0	0	0	-134	6,431	NA
PSERS S&P 500 Index Fund	3,463,552	-17,298	0	0	111,191	3,557,444	3.21
PSERS S&P 600 Index Fund	2	-1	0	0	1	2	NA
PSERS JP Morgan 600 Swap	53,795	0	0	0	2,156	55,951	4.01
PSERS JP Morgan 600 Swap II	144,267	1	0	0	5,754	150,022	3.99
PSERS S&P 400 Index Fund	198,269	-780	0	0	2,183	199,672	1.10
First Pacific Advisors, Inc.	192,781	-264	0	237	-2,783	189,497	-1.57
NorthPointe Capital, LLC	51,042	-53	0	275	4,024	54,738	7.36
AH Lisanti	53,924	0	0	52	3,782	57,653	6.92
Conestoga Capital Advisors	58,160	0	0	55	1,383	59,487	2.28
Hellman Jordan Mgmt (Terminated)	3,234	-3,230	0	5	0	0	NA
Opus Capital Management	57,222	0	0	40	724	57,907	1.20
<b>Managed Equity</b>	<b>4,282,812</b>	<b>-21,626</b>	<b>0</b>	<b>664</b>	<b>128,281</b>	<b>4,388,803</b>	
PSERS Fixed Liquidation	614	-2	0	0	1,306	1,918	NA
Bridgewater TIPS	1,669,521	0	0	0	-196,587	1,472,934	-11.78
PSERS TIPS (unlevered)	1,093,179	-2,213	0	0	-87,741	1,003,224	-8.03
PSERS TIPS (cash)	298,900	0	0	0	-33	298,867	-0.01
Black River Inflation Opp. Fund	68,411	0	0	0	18,477	86,888	27.01
Black River Inflation Opp. Fund C1 B	258,180	0	0	0	-81,320	176,860	-31.50
Apollo European Principle Fund II	38,696	-8,913	0	0	116	29,899	0.37
Brevan Howard CMBS Fund	135,842	-40,331	0	0	3,224	98,735	1.56
Carlyle Emerging Mezz. Opp. Fund	34,929	33,321	0	0	4,761	73,010	6.98



PA Public School Employees' Retirement Sys  
 Sources of Fund Growth  
 PSERS Total Fund  
 Quarter Ended 6/30/13

Manager Name	Beginning Value \$(000)	Net Contrib \$(000)	Distrib & Adm Fees \$(000)	Invest Fees \$(000)	Invest Gain/Loss \$(000)	Ending Value \$(000)	Time Wtd Return (%)
Hayfin Special Opp. Credit	28,319	-376	0	0	804	28,747	2.83
MacKay Shields	329,426	-5,729	0	275	-3,868	319,553	-1.29
Sankaty Credit Opp. Fund V-A	37,219	17,500	0	0	288	55,007	0.84
TOP NPL (A)	38,734	31,730	0	0	338	70,802	0.53
TPG Opp Partners II	37,199	18,964	0	0	6,901	63,063	12.38
BlackRock Mortgage Investors	425,873	-11,949	0	0	3,394	417,318	0.74
Brigade Distressed Value	115,642	0	0	0	-965	114,677	-0.83
Cerberus Levered Loan Fund I	159,288	-53,448	0	0	3,209	109,050	2.74
Cerberus Levered Loan Fund II	102,958	-20,778	0	0	2,292	84,473	2.46
ICG Europe Fund	42,446	16,569	0	0	3,476	62,491	7.27
LBC Credit Partners	204,048	-51,275	0	0	8,322	161,095	4.17
LBC Credit Partners III	19,715	7,016	0	0	2,508	29,239	12.98
Mariner/Galton RMBS	264,758	-2,878	0	8,000	11,097	264,977	1.16
Oaktree Loan Fund 2X, LP	65,112	-39,422	0	0	-576	25,114	-0.99
Sankaty Credit Oppt. Fund IV	277,767	-68,654	0	0	4,119	213,232	1.48
Sankaty Advisors Bank Loans	383,029	0	0	0	1,363	384,392	0.36
Sankaty Middle Market Fund	149,765	-12,418	0	0	2,543	139,889	1.77
PSERS U.S. Long Treasuries	28,336	30,000	0	0	-19,455	38,880	-5.54
BlackRock Global Alpha	621,435	0	0	0	-8,389	613,045	-1.35
PSERS Active	1,180,141	-11,441	0	0	-28,458	1,140,242	-2.43
Western Asset Management	265,905	-2,055	0	133	-7,523	256,193	-2.90
Piedmont Inv. Advisors	52,414	0	0	33	-1,444	50,937	-2.82
Pugh Capital Management	91,623	0	0	44	-2,502	89,077	-2.78



PA Public School Employees' Retirement Sys  
Sources of Fund Growth  
PSERS Total Fund  
Quarter Ended 6/30/13

Manager Name	Beginning Value \$(000)	Net Contrib \$(000)	Distrib & Adm Fees \$(000)	Invest Fees \$(000)	Invest Gain/Loss \$(000)	Ending Value \$(000)	Time Wtd Return (%)
PIMCO Multi-Sector Strategy	885,443	0	0	0	-35,040	850,403	-3.96
<b>Managed Fixed</b>	<b>9,404,863</b>	<b>-176,782</b>	<b>0</b>	<b>8,484</b>	<b>-395,366</b>	<b>8,824,231</b>	
AQR GRP EL 20 Offshore Fund	353,751	0	0	0	-73,000	280,751	-20.64
Bridgewater All Weather @15	1,126,419	0	0	0	-142,035	984,384	-12.61
PSERS Optimal Liquid Beta	99,940	0	0	0	-14,390	85,550	-14.40
<b>Risk Parity</b>	<b>1,580,110</b>	<b>0</b>	<b>0</b>	<b>0</b>	<b>-229,425</b>	<b>1,350,685</b>	
PSERS Cash Management	1,322,804	2,088,831	1,868,339	352	697	1,543,642	0.02
PSERS Cash Management Sub	15,084	48,298	0	0	2	63,384	0.02
<b>Unallocated STIF/Dreyfus</b>	<b>1,337,889</b>	<b>2,137,129</b>	<b>1,868,339</b>	<b>352</b>	<b>699</b>	<b>1,607,026</b>	
Pareto	-3,442	10,288	0	405	-2,303	4,138	-0.14
Wasatch EM Small Cap	311,984	-1,320	4	646	-16,120	293,894	-5.40
Westwood Global	74,432	0	5	159	-5,154	69,113	-7.14
PSERS ACWI x US	1,809,213	-16,292	0	2,850	-43,117	1,746,954	-2.57
PSERS France Swaps	140,480	-1,494	0	0	4,021	143,007	2.83
PSERS JP Morgan Swaps	47,078	-100	0	0	-3,831	43,147	-8.16
PSERS JP Morgan Swaps III	127,902	-225	0	0	-10,419	117,258	-8.16
PSERS JP Swap 4	76,553	-100	0	0	-6,257	70,197	-8.18
PSERS JP Swap 5	27,295	-2,414	0	0	-2,067	22,814	-8.04
BTC - Pan Europe	68,928	5,470	0	0	474	74,873	0.74
BTC - Japan	107	410	0	0	-71	446	-5.65



PA Public School Employees' Retirement Sys  
Sources of Fund Growth  
PSERS Total Fund  
Quarter Ended 6/30/13

Manager Name	Beginning Value \$(000)	Net Contrib \$(000)	Distrib & Adm Fees \$(000)	Invest Fees \$(000)	Invest Gain/Loss \$(000)	Ending Value \$(000)	Time Wtd Return (%)
BTC - Canada	11,833	532	0	0	-793	11,573	-6.45
BTC - Pacific Rim Ex-Japan	15,946	7,862	0	6,956	-1,786	15,066	-40.06
BTC - UBS	-982	-1,319	0	0	288	-2,013	-100.00
BTC - UBS Japan CFD	22,926	0	0	0	1,481	24,407	6.46
BTC - Alpha Advantage Emerging	105,255	0	0	0	-7,134	98,121	-6.78
BTC - 32 Cap Ltd.	168,151	0	0	0	-1,168	166,983	-0.69
BTC - Global Ex-US Equity	-695	4,287	0	0	-3,876	-284	-100.00
BTC - Active Currency Overlay	452	-327	0	0	-2,088	-1,964	NA
BTC - Money Market EBT	54,076	-11,541	0	0	33	42,568	0.07
Baillie Gifford	501,015	-3,299	1	372	-16,448	480,895	-3.39
Marathon Asset Mgmt.	509,477	-3,319	0	416	864	506,606	0.07
Acadian Asset Mgmt	165,856	-825	28	199	-3,605	161,199	-2.32
Batterymarch Int'l Sm Cap	66,392	-347	0	0	-988	65,057	-1.51
Oberweis Asset Mgmt	108,909	-251	0	245	6,339	114,752	5.59
Pyramis	125,872	-574	0	247	-3,925	121,126	-3.34
Wasatch Advisors	197,838	-446	0	418	-2,747	194,228	-1.61
PSERS Emerging Markets Fund	253,396	-259	3	0	-19,890	233,245	-7.86
Glovista	30,497	0	0	20	-2,183	28,294	-7.22
John Hsu Capital	58,999	0	0	57	-1,945	56,997	-3.39
Shah Capital Management	25,829	-12,000	0	0	1,058	14,887	6.68
<b>Int'l Equity</b>	<b>5,101,570</b>	<b>-27,603</b>	<b>40</b>	<b>12,990</b>	<b>-143,354</b>	<b>4,917,584</b>	
Alliance Bernstein Global Fixed	299,341	-2,858	0	208	-8,852	287,423	-3.06



PA Public School Employees' Retirement Sys  
Sources of Fund Growth  
PSERS Total Fund  
Quarter Ended 6/30/13

Manager Name	Beginning Value \$(000)	Net Contrib \$(000)	Distrib & Adm Fees \$(000)	Invest Fees \$(000)	Invest Gain/Loss \$(000)	Ending Value \$(000)	Time Wid Return (%)
Strategic Fixed Income LLC	149,384	-826	0	82	-5,726	142,750	-3.91
Franklin Templeton	451,732	-7,467	0	551	-20,175	423,539	-4.66
Stone Harbor	425,130	-3,675	0	674	-31,879	388,902	-7.73
<b>Global Fixed Income</b>	<b>1,325,587</b>	<b>-14,826</b>	<b>0</b>	<b>1,515</b>	<b>-66,632</b>	<b>1,242,614</b>	
Private Real Estate Composite	6,464,433	143,684	159,903	8,009	157,558	6,597,762	2.31
PTRES Composite	200,505	-1,857	0	0	3,591	202,239	1.80
<b>Real Estate</b>	<b>6,664,938</b>	<b>141,827</b>	<b>159,903</b>	<b>8,009</b>	<b>161,149</b>	<b>6,800,002</b>	
Managed Stock Distribution	0	19,074	513	0	-588	17,974	-22.25
Private Equity Composite	8,306,870	150,959	251,338	-1,401	280,586	8,488,478	3.42
Private Debt Composite	1,577,061	54,334	175,827	0	40,473	1,496,041	2.55
Venture Capital Composite	855,949	25,369	53,671	0	7,979	835,627	0.95
Internally Managed Composite	40,935	6,273	0	15	529	47,722	0.49
<b>Special Investments</b>	<b>10,780,815</b>	<b>256,010</b>	<b>481,349</b>	<b>-1,386</b>	<b>328,979</b>	<b>10,885,841</b>	
Black River Global Agriculture	148,100	0	0	0	8,524	156,624	5.76
Black River Global Ag. Fund STIF	50,017	-8,037	0	0	22	42,002	0.05
Black River Global Ag. Swap	1,292	8,037	0	0	-18,955	-9,626	-9.42
Credit Suisse	302,275	-245	1	146	-27,861	274,022	-9.27
DB Advisors	371,343	-355,490	0	821	-10,977	4,055	-2.87
Gresham	492,377	0	0	1,389	-40,031	450,958	-8.41
PSERS Gold Fund	7,463	100,000	0	0	-137,159	-29,696	-22.71



PA Public School Employees' Retirement Sys  
 Sources of Fund Growth  
 PSERS Total Fund  
 Quarter Ended 6/30/13

Manager Name	Beginning Value \$(000)	Net Contrib \$(000)	Distrib & Adm Fees \$(000)	Invest Fees \$(000)	Invest Gain/Loss \$(000)	Ending Value \$(000)	Time Wtd Return (%)
Schroders Investment Management	470,405	-146	0	905	-37,572	431,782	-8.18
Wellington Management Company	591,390	-1,737	0	1,348	-64,115	524,191	-11.09
<b>Commodities</b>	<b>2,434,662</b>	<b>-257,617</b>	<b>1</b>	<b>4,608</b>	<b>-328,122</b>	<b>1,844,313</b>	
AQR Offshore Multi-Strategy Fund	412,454	0	0	0	23,974	436,428	5.81
Aeolus Property Catastrophe Fund	175,766	84,325	0	0	-5,791	254,299	-1.79
Black River Fixed Inc. Rel Value Opp	268,621	0	0	0	6,152	274,773	2.29
BlackRock Global Ascent (Terminated)	306,042	-306,976	0	1,108	2,041	0	NA
BlackRock Capital Structure Inv Fund	255,716	0	0	0	6,120	261,836	2.39
Blue Trend Fund Limited	257,278	0	0	656	-37,281	219,341	-14.75
Boston Co. Microcap (Terminated)	167	-166	0	0	-1	0	NA
Brevan Howard Fund Limited	419,356	0	0	0	1,326	420,682	0.32
Bridgewater Pure Alpha Fund II	850,316	0	0	0	-1,998	848,318	-0.24
Brigade Leveraged Capital Structures	728,220	0	0	0	-2,258	725,962	-0.31
Capula Tail Risk Fund	354,467	0	0	0	234	354,701	0.07
Capula Global Relative Value Fund	220,385	0	0	0	1,383	221,768	0.63
Ellis Lake Domestic Fund	50,000	50,000	0	0	15	100,015	0.89
FX Concepts (Terminated)	2,202	-2,116	0	0	-86	0	NA
Lazard Emerging Income Plus	128,953	0	0	0	-6,561	122,392	-5.09
Caspian Select Credit Intl.	220,180	0	0	0	2,391	222,571	1.09
Nephila/Palmetto Fund	281,444	0	0	0	3,156	284,600	1.12
PIMCO PARS/GCOF/MAV Composite	693,787	0	0	1,180	-8,298	684,309	-1.37
Pareto Active Currency (Terminated)	54	-54	0	0	0	0	NA



PA Public School Employees' Retirement Sys  
 Sources of Fund Growth  
 PSERS Total Fund  
 Quarter Ended 6/30/13

Manager Name	Beginning Value \$(000)	Net Contrib \$(000)	Distrib & Adm Fees \$(000)	Invest Fees \$(000)	Invest Gain/Loss \$(000)	Ending Value \$(000)	Time Wtd Return (%)
Robeco Transrend Diversified	199,057	0	0	0	-6,195	192,862	-3.11
Apollo/Sciens Aviation Fund II	44,783	2,467	0	0	1,769	49,018	3.88
Denali Advisors	35,970	-35,414	0	44	-512	0	NA
<b>Absolute Return</b>	<b>5,905,217</b>	<b>-207,933</b>	<b>0</b>	<b>2,988</b>	<b>-20,421</b>	<b>5,673,875</b>	
Non-Core STIF	0	0	0	0	0	0	NA
Miscellaneous Composite	876	-1,287	0	0	920	508	NA
<b>Other</b>	<b>876</b>	<b>-1,287</b>	<b>0</b>	<b>0</b>	<b>920</b>	<b>508</b>	
Harvest MLP ALpha	559,950	-2,041	0	576	18,415	575,748	3.20
Harvest Enhanced Index	6,381	0	0	0	223	6,604	3.50
Salient Capital Partners	414,780	48,629	0	389	21,736	484,756	4.69
Altantic Trust Private Wealth Mgmt.	302,993	98,758	0	0	11,729	413,481	3.19
<b>Managed MLP</b>	<b>1,284,104</b>	<b>145,346</b>	<b>0</b>	<b>966</b>	<b>52,104</b>	<b>1,480,588</b>	
<b>PSERS Total Fund</b>	<b>50,103,443</b>	<b>1,972,637</b>	<b>2,509,633</b>	<b>39,190</b>	<b>-511,188</b>	<b>49,016,070</b>	<b>-1.12</b>





PA Public School Employees' Retirement Sys  
 Sources of Fund Growth  
 PSERS Healthcare & HOP

Quarter Ended 6/30/13

Manager Name	Beginning Value \$(000)	Net Contrib \$(000)	Distrib & Adm Fees \$(000)	Invest Fees \$(000)	Invest Gain/Loss \$(000)	Ending Value \$(000)	Time Wid Return (%)
PSERS Healthcare - Premium Assist	26,747	-6,704	0	0	-41	20,002	-0.10
PSERS Healthcare - HOP	88,408	5,957	5,957	0	43	88,451	0.05
<b>PSERS Healthcare &amp; HOP</b>	<b>115,155</b>	<b>-746</b>	<b>5,957</b>	<b>0</b>	<b>2</b>	<b>108,453</b>	<b>0.00</b>

PA Public School Employees' Retirement Sys  
Fund Return Table  
Quarter Ended 6/30/13

Manager	1 Quarter	2 Quarters	3 Quarters	1 Year	3 Years	5 Years	Since 6/30/03	Inception Date	Inception Return
<b>PSERS S&amp;P 500 Composite</b>									
Gross of Fee Return	3.21	14.26	13.98	21.30	18.72	7.58	7.61	9/30/83	10.73
Net of Fee Return	3.21	14.26	13.98	21.30	18.72	7.58	7.61	9/30/83	10.73
Published S&P 500 Index	2.91	13.82	13.39	20.60	18.45	7.01	7.30	9/30/83	10.64
<b>Total US Large Cap Composite</b>									
Gross of Fee Return	3.21	14.27	14.01	21.34	18.73	6.05	6.78	6/30/82	11.56
Net of Fee Return	3.21	14.26	14.01	21.33	18.72	6.03	6.73	6/30/97	5.03
Published S&P 500 Index	2.91	13.82	13.39	20.60	18.45	7.01	7.30	6/30/97	5.70
MSCI USA Large Cap Index	2.61	12.91	11.74	18.75	17.51	6.03			
<b>PSERS S&amp;P 400 Composite</b>									
Gross of Fee Return	1.10	14.70	18.69	25.63	19.90	9.95	11.33	6/30/98	9.96
Net of Fee Return	1.10	14.70	18.69	25.63	19.90	9.95	11.33	6/30/98	9.96
Published S&P 400	1.00	14.59	18.72	25.18	19.45	8.91	10.74	6/30/98	9.53
<b>PSERS S&amp;P 600 Composite</b>									
Gross of Fee Return	3.99	16.87	19.80	26.75	21.43	11.41	11.58	12/31/94	11.70
Net of Fee Return	3.99	16.87	19.80	26.75	21.43	11.41	11.58	12/31/94	11.70
Published S&P 600	3.92	16.19	18.77	25.18	20.27	9.95	10.77	12/31/94	11.10



**PA Public School Employees' Retirement Sys**  
**Fund Return Table**  
 Quarter Ended 6/30/13

Manager	1 Quarter	2 Quarters	3 Quarters	1 Year	3 Years	5 Years	Since 6/30/03	Inception Date	Inception Return
<b>PSERS Small Index Composite</b>									
Gross of Fee Return	2.55	15.79	19.45	26.34	20.66	10.66	11.35	6/30/92	12.24
Net of Fee Return	2.55	15.79	19.45	26.34	20.66	10.66	11.35	6/30/92	12.24
<b>First Pacific Advisors, Inc.</b>									
Gross of Fee Return	-1.44	9.14	13.40	23.41	16.03	8.21	10.92	9/30/91	15.20
Net of Fee Return	-1.57	8.88	12.92	22.74	15.40	7.62	10.35	6/30/97	10.92
Russell 2500 Value Index	1.54	15.09	19.86	26.87	18.92	9.42	10.16	6/30/97	9.35
Barclays Universal Index	-2.37	-2.29	-1.73	0.24	4.08	5.52	4.84	6/30/97	5.97
Blended Benchmark (FPA)	1.12	10.89	13.62	18.93	16.07	8.31	9.60	6/30/97	9.00
<b>Opus Capital Management</b>									
Gross of Fee Return	1.27	13.17	17.66	23.89	16.76	9.22		12/31/04	6.31
Net of Fee Return	1.20	13.03	17.40	23.53	16.35	8.74		12/31/04	5.80
MSCI USA Small Cap Value	1.38	15.08	19.01	25.32	18.24	11.10		12/31/04	6.93
Russell 2000 Value	2.47	14.38	18.07	24.75	17.33	8.59		12/31/04	5.59
Blended Benchmark (Opus)	1.38	15.08	19.01	25.32	18.35	9.15		12/31/04	5.91
<b>US Small Cap Value Composite</b>									
Gross of Fee Return	-0.82	10.06	14.37	23.51	16.69	8.51	10.32	6/30/90	12.96
Net of Fee Return	-0.93	9.82	13.94	22.91	16.07	7.93	9.75	6/30/97	8.83
MSCI USA Small Cap Value	1.38	15.08	19.01	25.32	18.24	11.10	10.18	6/30/97	8.68

PA Public School Employees' Retirement Sys  
 Fund Return Table  
 Quarter Ended 6/30/13

Manager	1 Quarter	2 Quarters	3 Quarters	1 Year	3 Years	5 Years	Since 6/30/03	Inception Date	Inception Return
<b>AH Lisanti</b>									
Gross of Fee Return	7.02	24.63	20.82	26.00	22.78			9/30/08	15.45
Net of Fee Return	6.92	24.39	20.42	25.47	22.30			9/30/08	15.00
MSCI USA Small Cap Growth	3.90	16.43	18.48	25.03	20.43			9/30/08	12.71
Russell 2000 Growth	3.73	17.42	17.95	23.66	19.95			9/30/08	11.05
Blended Benchmark (AH Lisanti)	3.90	16.43	18.48	25.03	19.72			9/30/08	10.92
<b>US Small Cap Growth Composite</b>									
Gross of Fee Return	7.02	24.63	20.82	26.00	22.78			9/30/08	15.38
Net of Fee Return	6.92	24.39	20.42	25.47	22.30			9/30/08	14.93
MSCI USA Small Cap Growth	3.90	16.43	18.48	25.03	20.43			9/30/08	12.71
<b>Conestoga Capital Advisors</b>									
Gross of Fee Return	2.38	17.47	18.84	20.53	21.71	12.47		12/31/04	9.06
Net of Fee Return	2.28	17.25	18.47	20.03	21.20	11.99		12/31/04	8.61
MSCI USA Small Cap Index	2.63	15.75	18.75	25.18	19.38	10.10		12/31/04	6.68
Russell 2000	3.09	15.86	18.00	24.20	18.67	8.77		12/31/04	6.30
Blended Benchmark (Conestoga)	2.63	15.75	18.75	25.18	19.08	8.99		12/31/04	6.43
<b>US Small Cap Core Composite</b>									
Gross of Fee Return	2.38	17.47	18.84	20.53	22.25	17.46		12/31/04	11.88
Net of Fee Return	2.28	17.25	18.47	20.03	21.63	16.86		12/31/04	11.36
MSCI USA Small Cap Index	2.63	15.75	18.75	25.18	19.38	10.10		12/31/04	6.68



PA Public School Employees' Retirement Sys  
 Fund Return Table  
 Quarter Ended 6/30/13

Manager	1 Quarter	2 Quarters	3 Quarters	1 Year	3 Years	5 Years	Since 6/30/03	Inception Date	Inception Return
<b>US Small Cap Active Composite</b>									
Gross of Fee Return	0.86	13.32	16.07	23.41	18.67	8.51	10.24	6/30/90	13.01
Net of Fee Return	0.75	13.09	15.65	22.84	18.06	7.91	9.68	6/30/97	8.51
<b>Total US Small Cap X Micro Composite</b>									
Gross of Fee Return	1.74	14.61	18.00	25.14	19.66	9.93	11.01	6/30/90	13.24
Net of Fee Return	1.69	14.50	17.81	24.87	19.43	9.68	10.77	6/30/97	10.04
MSCI USA SMID Index	2.51	15.61	18.65	25.36	19.36	8.76	10.29	6/30/97	8.38
MSCI USA Small Cap Index	2.63	15.75	18.75	25.18	19.38	10.10	10.06		
<b>NorthPointe Capital, LLC</b>									
Gross of Fee Return	7.91	25.26	17.23	18.56	20.45	10.37		12/31/04	5.07
Net of Fee Return	7.36	24.61	16.32	17.34	19.25	9.24		12/31/04	4.00
MSCI US Microcap Index	6.30	24.50	22.51	32.69	22.91	13.67		12/31/04	7.04
Blended Benchmark (NPC)	6.30	24.50	22.51	32.69	22.91	12.77		12/31/04	6.10
<b>US Micro Cap Composite</b>									
Gross of Fee Return	7.91	25.26	17.23	18.56	16.26	7.65		12/31/04	4.97
Net of Fee Return	7.36	24.61	16.32	17.34	14.88	6.46		12/31/04	3.88
MSCI US Microcap Index	6.30	24.50	22.51	32.69	22.91	13.67		12/31/04	7.04
Blended Policy (US Micro)	6.30	24.50	22.51	32.69	22.91	12.77		12/31/04	6.29



PA Public School Employees' Retirement Sys  
 Fund Return Table  
 Quarter Ended 6/30/13

Manager	1 Quarter	2 Quarters	3 Quarters	1 Year	3 Years	5 Years	Since 6/30/03	Inception Date	Inception Return
<b>Total US Small Cap Composite</b>									
Gross of Fee Return	2.13	15.26	17.81	24.56	19.38	9.83	10.78	6/30/90	13.14
Net of Fee Return	2.05	15.12	17.57	24.22	19.05	9.48	10.46	6/30/97	9.85
MSCI USA Small Cap Index	2.63	15.75	18.75	25.18	19.38	10.10	10.06		
MSCI USA SMID Index	2.51	15.61	18.65	25.36	19.36	8.76	10.29	6/30/97	8.38
Wilshire 4500 Index	2.21	15.43	18.98	25.22	19.26	8.74	10.47	6/30/97	7.83
Published S&P 400 Index	1.00	14.59	18.72	25.18	19.45	8.91	10.74	6/30/97	10.56
Published S&P 600 Index	3.92	16.19	18.77	25.18	20.27	9.95	10.77	6/30/97	9.03
<b>Total US Equity Composite</b>									
Gross of Fee Return	3.00	14.43	14.72	21.96	18.87	7.11	7.84	12/31/99	4.37
Net of Fee Return	2.98	14.40	14.68	21.89	18.78	7.01	7.72	12/31/99	4.26
MSCI USA IMI	2.58	13.67	13.63	20.56	18.03	6.75	7.43	12/31/99	3.84
Wilshire 5000 Index	2.77	13.97	14.08	21.10	18.45	7.19	7.95	12/31/99	3.17
Blended Policy (Tot US Eq)	2.58	13.67	13.63	20.56	18.03	6.84	7.78	12/31/99	3.05
<b>PSERS ACWI x US Index Fund</b>									
Gross of Fee Return	-2.80	0.78	6.82	14.85	8.87	0.11	9.16	3/31/97	5.60
Net of Fee Return	-2.93	0.61	6.64	14.66	8.80	0.06	9.13	3/31/97	5.58
MSCI ACWI/EAFE Index Blend (N)	-3.11	-0.04	5.80	13.63	7.99	-0.80	8.52	3/31/97	5.01
<b>Baillie Gifford</b>									
Gross of Fee Return	-3.32	0.59	6.01	15.60	11.99	1.76	12.12	6/30/02	10.30
Net of Fee Return	-3.39	0.40	5.79	14.86	11.31	1.25	11.70	6/30/02	9.90

PA Public School Employees' Retirement Sys  
 Fund Return Table  
 Quarter Ended 6/30/13

Manager	1 Quarter	2 Quarters	3 Quarters	1 Year	3 Years	5 Years	Since 6/30/03	Inception Date	Inception Return
<b>BlackRock Global Composite</b>									
Gross of Fee Return	-3.30	0.09	5.67	14.97	17.08	3.39		9/30/04	9.22
Net of Fee Return	-4.77	-2.90	1.23	8.08	14.00	1.60		9/30/04	7.96
<b>Marathon Asset Mgmt.</b>									
Gross of Fee Return	0.15	7.64	13.17	21.21	13.12	4.50	12.65	9/30/90	10.58
Net of Fee Return	0.07	7.47	12.91	20.83	12.75	4.13	12.29	6/30/97	8.99
<b>John Hsu Capital</b>									
Gross of Fee Return	-3.30	-0.47	5.91	11.52	7.24	2.32	10.71	3/31/98	6.38
Net of Fee Return	-3.39	-0.68	5.59	11.08	6.83	1.92	10.28	3/31/98	5.95
MSCI World Index (N)	0.64	8.43	11.12	18.57	13.72	2.70	7.24	3/31/98	3.77
<b>Shah Capital Management</b>									
Gross of Fee Return	6.68	3.19	19.96	16.73	-12.55	0.77		6/30/06	2.73
Net of Fee Return	6.68	3.19	19.96	16.73	-12.55	0.77		6/30/06	2.62
MSCI World (N)	0.64	8.43	11.12	18.57	13.72	2.70		6/30/06	3.37
1 Mo LIBOR (lag)	0.05	0.10	0.15	0.21	0.24	0.50			
Blended Benchmark (Shah)	0.35	4.25	5.58	9.15	7.16	2.31		6/30/06	3.26
<b>Active Non-US Lg Cap Comp</b>									
Gross of Fee Return	-2.08	2.61	8.40	16.92	13.46	2.27	10.36	6/30/92	8.32
Net of Fee Return	-2.57	1.60	6.90	14.47	12.22	1.46	9.77	6/30/97	6.13

**PA Public School Employees' Retirement Sys**  
**Fund Return Table**  
 Quarter Ended 6/30/13

Manager	1 Quarter	2 Quarters	3 Quarters	1 Year	3 Years	5 Years	Since 6/30/03	Inception Date	Inception Return
<b>Non-US Lg Cap Eq Comp</b>									
Gross of Fee Return	-2.52	1.52	7.52	15.73	10.08	0.58	9.53	9/30/89	6.84
Net of Fee Return	-2.78	1.02	6.84	14.73	9.65	0.28	9.25	6/30/97	5.76
MSCI ACWI ex-US Index (N)	-3.11	-0.04	5.80	13.63	7.99	-0.80	8.62		
MSCI ACWI ex-US Index (G)	-2.90	0.27	6.18	14.14	8.48	-0.34	9.09	6/30/97	4.74
Blended Policy (Non-US Large)	-3.11	-0.04	5.80	13.63	7.99	-0.80	8.84	6/30/97	4.77
<b>Acadian Asset Mgmt</b>									
Gross of Fee Return	-2.20	6.42	14.13	25.41	13.48	2.96		6/30/05	10.60
Net of Fee Return	-2.32	6.17	13.73	24.81	12.92	2.41		6/30/05	10.08
MSCI ACWI ex-US Sm Cap Idx (N)	-4.42	1.83	6.82	15.94	9.16	2.65		6/30/05	6.61
Blended Benchmark (Acadian)	-4.42	1.83	6.82	15.94	9.16	2.65		6/30/05	7.37
<b>Batterymarch Int'l Sm Cap</b>									
Gross of Fee Return	-1.51	6.91	12.77	23.40	15.52	4.35		6/30/08	4.35
Net of Fee Return	-1.51	6.72	12.37	22.72	14.71	3.59		6/30/08	3.59
MSCI ACWI ex-US Sm Cap Idx (N)	-4.42	1.83	6.82	15.94	9.16	2.65		6/30/08	2.65
<b>Oberweis Asset Mgmt</b>									
Gross of Fee Return	5.81	23.02	33.32	52.61	25.49	5.78		6/30/08	5.78
Net of Fee Return	5.59	22.49	32.44	51.23	24.29	4.73		6/30/08	4.73
MSCI ACWI ex-US Sm Cap Idx (N)	-4.42	1.83	6.82	15.94	9.16	2.65		6/30/08	2.65
<b>Pyramis</b>									
Gross of Fee Return	-3.15	4.18	9.85	21.14	12.05			9/30/08	11.38
Net of Fee Return	-3.34	3.78	9.22	20.21	11.15			9/30/08	10.52
MSCI ACWI ex-US Sm Cap Idx (N)	-4.42	1.83	6.82	15.94	9.16			9/30/08	9.29



PA Public School Employees' Retirement Sys  
 Fund Return Table  
 Quarter Ended 6/30/13

Manager	1 Quarter	2 Quarters	3 Quarters	1 Year	3 Years	5 Years	Since 6/30/03	Inception Date	Inception Return
<b>Wasatch Advisors</b>									
Gross of Fee Return	-1.41	10.12	16.40	31.02	19.80	11.38		9/30/05	10.84
Net of Fee Return	-1.61	9.67	15.68	29.93	18.77	10.31		9/30/05	9.90
MSCI ACWI ex-US Sm Cap Idx (N)	-4.42	1.83	6.82	15.94	9.16	2.65		9/30/05	5.36
Blended Benchmark (Wasatch)	-4.42	1.83	6.82	15.94	9.16	2.65		9/30/05	6.15
<b>Active Non-US Sm Cap Comp</b>									
Gross of Fee Return	-0.76	9.71	16.76	30.04	16.70	5.37		6/30/05	9.35
Net of Fee Return	-0.92	9.34	16.15	29.12	15.78	4.52		6/30/05	8.58
MSCI ACWI ex-US Sm Cap Idx (N)	-4.42	1.83	6.82	15.94	9.16	2.65		6/30/05	6.61
Blended Policy (Act Non-US Sm)	-4.42	1.83	6.82	15.94	9.16	2.65		6/30/05	7.37
<b>Non-US Small Cap Equity Composite</b>									
Gross of Fee Return	-0.76	9.71	16.55	29.01	15.92	4.90		6/30/05	9.04
Net of Fee Return	-0.92	9.34	15.95	28.16	15.20	4.16		6/30/05	8.35
MSCI ACWI ex-US Sm Cap Idx (N)	-4.42	1.83	6.82	15.94	9.16	2.65		6/30/05	6.61
<b>Total Non-U.S. Developed Equity Comp.</b>									
Gross of Fee Return	-2.26	2.68	8.82	17.63	10.90	1.18	9.85	9/30/89	6.97
Net of Fee Return	-2.50	2.20	8.15	16.65	10.44	0.83	9.53	6/30/97	5.93
MSCI ACWI ex-US Index (N)	-3.11	-0.04	5.80	13.63	7.99	-0.80	8.62		



PA Public School Employees' Retirement Sys  
 Fund Return Table  
 Quarter Ended 6/30/13

Manager	1 Quarter	2 Quarters	3 Quarters	1 Year	3 Years	5 Years	Since 6/30/03	Inception Date	Inception Return
<b>PSERS Emerging Markets Fund</b>									
Gross of Fee Return	-7.86	-9.39	-4.43					9/30/12	-4.43
Net of Fee Return	-7.86	-9.39	-4.43					9/30/12	-4.43
MSCI EM Index (N)	-8.08	-9.57	-4.53					9/30/12	-4.53
<b>Passive Emerging Markets Composite</b>									
Gross of Fee Return	-7.86	-9.39	-4.43					9/30/12	-4.43
Net of Fee Return	-7.86	-9.39	-4.43					9/30/12	-4.43
MSCI EM Index (N)	-8.08	-9.57	-4.53					9/30/12	-4.53
<b>Wasatch EM Small Cap</b>									
Gross of Fee Return	-5.21	0.58	7.22	15.92	14.93	13.81		6/30/08	13.81
Net of Fee Return	-5.40	0.23	6.59	14.95	13.74	12.76		6/30/08	12.76
Blended Policy (Wasatch EM)	-6.03	-2.87	1.97	10.54	3.93	4.68		6/30/08	4.68
<b>Westwood Global</b>									
Gross of Fee Return	-6.94	-8.56	-2.44	4.55	7.44			9/30/09	7.25
Net of Fee Return	-7.14	-8.95	-3.05	3.68	6.54			9/30/09	6.38
MSCI EM Index (N)	-8.08	-9.57	-4.53	2.87	3.38			9/30/09	3.20



PA Public School Employees' Retirement Sys  
 Fund Return Table  
 Quarter Ended 6/30/13

Manager	1 Quarter	2 Quarters	3 Quarters	1 Year	3 Years	5 Years	Since 6/30/03	Inception Date	Inception Return
<b>Glovista</b>									
Gross of Fee Return	-7.05	-11.08	-4.14	1.54				9/30/11	7.69
Net of Fee Return	-7.22	-11.39	-4.58	1.07				9/30/11	7.33
MSCI EM Index (N)	-8.08	-9.57	-4.53	2.87				9/30/11	6.49
<b>Active Emerg Mrkts Comp</b>									
Gross of Fee Return	-5.64	-2.16	4.30	12.49	8.02	2.00	14.90	3/31/97	7.47
Net of Fee Return	-5.84	-2.52	3.69	11.60	6.95	0.96	13.90	6/30/97	6.07
MSCI EM Index (N)	-8.08	-9.57	-4.53	2.87	3.38	-0.43	13.66	6/30/97	5.79
MSCI EM Index (G)	-7.95	-9.40	-4.32	3.23	3.72	-0.11	14.02	6/30/97	6.06
Blended Policy (EM)	-8.08	-9.57	-4.53	2.87	3.38	-0.43	13.84	6/30/97	5.95
<b>Emerging Markets Composite</b>									
Gross of Fee Return	-6.50	-5.00	1.03	8.90	6.86	1.34	14.52	3/31/97	7.25
Net of Fee Return	-6.61	-5.21	0.65	8.26	5.97	0.41	13.59	6/30/98	9.47
MSCI EM Index (N)	-8.08	-9.57	-4.53	2.87	3.38	-0.43	13.66	6/30/98	9.75
MSCI EM Index (G)	-7.95	-9.40	-4.32	3.23	3.72	-0.11	14.02	6/30/98	10.05
Blended Policy (EM)	-8.08	-9.57	-4.53	2.87	3.38	-0.43	13.84	6/30/98	9.93



PA Public School Employees' Retirement Sys  
 Fund Return Table  
 Quarter Ended 6/30/13

Manager	1 Quarter	2 Quarters	3 Quarters	1 Year	3 Years	5 Years	Since 6/30/03	Inception Date	Inception Return
<b>Pareto</b>									
Gross of Fee Return	-0.12	1.56	1.65	1.13	-0.38	2.43		6/30/06	0.20
Net of Fee Return	-0.14	1.51	1.59	1.05	-0.46	2.35		6/30/06	0.14
<b>Currency Hedge Composite</b>									
Gross of Fee Return	-0.12	1.56	1.65	1.13	-0.38	2.43		6/30/06	0.20
Net of Fee Return	-0.14	1.51	1.59	1.05	-0.46	2.35		6/30/06	0.14
PSERS Currency Hedge Bnmk	0.00	0.00	0.00	0.00	0.00	2.65		6/30/06	0.32
<b>Total Non-US Equity Composite</b>									
Gross of Fee Return	-2.85	2.32	8.51	17.06	10.08	2.85	10.81	9/30/99	6.38
Net of Fee Return	-3.09	1.85	7.85	16.08	9.56	2.42	10.43	9/30/99	6.04
MSCI-AC World Ex US IMI (\$N)	-3.27	0.18	5.92	13.90	8.13	-0.41	8.93	9/30/99	4.68
Blended Policy (Ttl Non-US Eq)	-3.27	0.18	5.92	13.90	8.13	0.57	9.18	9/30/99	4.54
<b>Total Equity Composite</b>									
Gross of Fee Return	-0.18	7.69	11.23	19.14	13.93	4.82	8.64	3/31/92	8.99
Net of Fee Return	-0.32	7.41	10.83	18.57	13.61	4.53	8.39	6/30/97	6.36
MSCI AC World IMI Index (N)	-0.47	6.40	9.58	17.08	12.60	2.80	8.02	6/30/97	4.91
MSCI ACWI with USA Gross IMI (N)	-0.41	6.54	9.83	17.43	12.91	3.08	8.32		
Blended Policy (Total Eq)	-0.41	6.54	9.83	17.43	12.80	3.61	7.84	6/30/97	5.48



PA Public School Employees' Retirement Sys  
Fund Return Table  
Quarter Ended 6/30/13

Manager	1 Quarter	2 Quarters	3 Quarters	1 Year	3 Years	5 Years	Since 6/30/03	Inception Date	Inception Return
<b>BlackRock Global Alpha</b>									
Gross of Fee Return	-1.35	-0.00	2.05	6.44	9.36	9.70		6/30/07	9.00
Net of Fee Return	-1.35	-0.00	2.05	6.44	9.36	9.70		6/30/07	9.00
Blended Policy Benchmark	-2.32	-2.44	-2.24	-0.69	3.48	5.16		6/30/07	5.34
<b>PSERS Active</b>									
Gross of Fee Return	-2.43	-2.25	-1.61	0.14	4.59	7.16	5.90	3/31/98	6.70
Net of Fee Return	-2.43	-2.25	-1.61	0.14	4.59	7.16	5.90	3/31/98	6.70
Barclays Aggregate Index	-2.32	-2.44	-2.24	-0.69	3.51	5.19	4.52	3/31/98	5.59
<b>Western Asset Management</b>									
Gross of Fee Return	-2.85	-2.43	-1.38	2.06	5.81	7.16		6/30/05	5.36
Net of Fee Return	-2.90	-2.52	-1.53	1.85	5.60	6.95		6/30/05	5.17
Blended Policy Benchmark	-2.32	-2.44	-2.24	-0.69	3.48	5.16		6/30/05	4.65
<b>Piedmont Inv. Advisors</b>									
Gross of Fee Return	-2.76	-2.58	-2.18	0.15	4.28	6.05		12/31/04	5.27
Net of Fee Return	-2.82	-2.70	-2.36	-0.10	4.03	5.80		12/31/04	5.01
Barclays Aggregate Index	-2.32	-2.44	-2.24	-0.69	3.51	5.19		12/31/04	4.79
<b>Pugh Capital Management</b>									
Gross of Fee Return	-2.73	-2.57	-2.09	-0.19	4.23	6.43		6/30/06	6.47
Net of Fee Return	-2.78	-2.67	-2.23	-0.38	4.03	6.21		6/30/06	6.25
Barclays Aggregate Index	-2.32	-2.44	-2.24	-0.69	3.51	5.19		6/30/06	5.60
<b>US Core Plus FI Composite</b>									
Gross of Fee Return	-2.20	-1.67	-0.61	2.01	6.10	6.89	5.49	12/31/83	8.58
Net of Fee Return	-2.21	-1.68	-0.64	1.97	6.04	6.82	5.41	6/30/87	7.62
Barclays Universal	-2.37	-2.29	-1.73	0.24	4.08	5.52	4.84		
Barclays Aggregate	-2.32	-2.44	-2.24	-0.69	3.48	5.16	4.66		
Blended Policy (US Core+FI)	-2.32	-2.44	-2.24	-0.69	3.48	5.16	4.66		



PA Public School Employees' Retirement Sys  
 Fund Return Table  
 Quarter Ended 6/30/13

Manager	1 Quarter	2 Quarters	3 Quarters	1 Year	3 Years	5 Years	Since 6/30/03	Inception Date	Inception Return
<b>Alliance Bernstein Global Fixed</b>									
Gross of Fee Return	-2.99	-5.45	-4.34	0.31				12/31/11	1.13
Net of Fee Return	-3.06	-5.58	-4.54	-0.00				12/31/11	0.88
<b>Strategic Fixed Income LLC</b>									
Gross of Fee Return	-3.86	-6.18	-5.57					9/30/12	-5.57
Net of Fee Return	-3.91	-6.29	-5.70					9/30/12	-5.70
Barclays GlobalAgg GDP Weighted	-2.53	-5.36	-4.78					9/30/12	-4.78
<b>Non-U.S. Developed Mkts. FI Composite</b>									
Gross of Fee Return	-3.28	-5.69	-4.75	-0.33	4.02	5.44	5.68	6/30/92	6.64
Net of Fee Return	-3.34	-5.81	-4.93	-0.61	3.79	5.19	5.48	6/30/97	5.75
Barclays Multiverse Index	-2.73	-4.63	-4.91	-1.69	3.83	3.91	4.96		
Barclays GlobalAgg GDP Weighted	-2.53	-5.36	-4.78	-0.53					
Blended Policy (Active Global)	-2.53	-5.36	-4.78	-0.53	3.82	3.90	4.96		
<b>Franklin Templeton</b>									
Gross of Fee Return	-4.54	-1.79	1.96	9.31	9.18			9/30/08	11.38
Net of Fee Return	-4.66	-2.04	1.56	8.74	8.60			9/30/08	10.79
8% Annualized Return	1.94	3.92	5.94	8.00	8.00			9/30/08	8.00
Barclays Emerging Mkt 10% Count.	-6.63	-6.11	-2.17	2.70	6.29			9/30/08	6.76
Blended Benchmark (Franklin)	-6.63	-6.11	-2.17	4.42	7.81			9/30/08	7.88



**PA Public School Employees' Retirement Sys**  
**Fund Return Table**  
 Quarter Ended 6/30/13

Manager	1 Quarter	2 Quarters	3 Quarters	1 Year	3 Years	5 Years	Since 6/30/03	Inception Date	Inception Return
<b>Stone Harbor</b>									
Gross of Fee Return	-7.57	-7.50	-4.43	0.33	6.12			3/31/10	5.60
Net of Fee Return	-7.73	-7.80	-4.89	-0.30	5.47			3/31/10	4.98
Barclays Emerging Mkt 10% Count.	-6.63	-6.11	-2.17	2.70	6.29			3/31/10	5.03
JP Morgan GBI EM Global Divers.	-7.04	-7.15	-3.31	1.33	6.03			3/31/10	4.91
<b>Emerging Markets FI Composite</b>									
Gross of Fee Return	-6.01	-4.60	-1.19	4.84	7.57			3/31/10	6.93
Net of Fee Return	-6.15	-4.88	-1.62	4.24	6.96			3/31/10	6.34
JP Morgan GBI EM Global Divers.	-7.04	-7.15	-3.31	1.33	6.03			3/31/10	4.91
Barclays Emerging Mkt 10% Count.	-6.63	-6.11	-2.17	2.70					
Blended Policy (EM FI)	-6.63	-6.11	-2.17	2.70	6.29			3/31/10	5.14
<b>Global Fixed Income Composite</b>									
Gross of Fee Return	-3.27	-2.90	-1.28	2.40				6/30/12	2.40
Net of Fee Return	-3.32	-3.00	-1.43	2.20				6/30/12	2.20
Blended Policy (Global FI)	-3.43	-3.72	-2.50	0.22				6/30/12	0.22
<b>PSERS U.S. Long Treasuries</b>									
Gross of Fee Return	-5.54	-7.84	-8.47	-7.37				6/30/12	-7.37
Net of Fee Return	-5.54	-7.84	-8.47	-7.37				6/30/12	-7.37
Barclays Long Treasury	-5.58	-7.83	-8.54	-8.36				6/30/12	-8.36
<b>U.S. Long Treasuries Composite</b>									
Gross of Fee Return	-5.54	-7.84	-8.47	-7.37				6/30/12	-7.37
Net of Fee Return	-5.54	-7.84	-8.47	-7.37				6/30/12	-7.37
Barclays Long Treasury	-5.58	-7.83	-8.54	-8.36				6/30/12	-8.36

\*Please note the PSERS U.S. Long Treasuries Fund has a 2Q2013 levered return of (55.20) and an unlevered return of (5.54). All respective composites are incorporating the levered return.

PA Public School Employees' Retirement Sys  
 Fund Return Table  
 Quarter Ended 6/30/13

Manager	1 Quarter	2 Quarters	3 Quarters	1 Year	3 Years	5 Years	Since 6/30/03	Inception Date	Inception Return
<b>Apollo European Principle Fund II</b>									
Gross of Fee Return	0.37	-8.03	-6.27					9/30/12	-6.27
Net of Fee Return	0.37	-8.03	-6.27					9/30/12	-6.27
Barclays High Yield	-1.44	1.42	4.75					9/30/12	4.75
<b>Carlyle Emerging Mezz. Opp. Fund LP</b>									
Gross of Fee Return	6.98	13.97	16.71					9/30/12	16.71
Net of Fee Return	6.98	13.97	16.71					9/30/12	16.71
Barclays High Yield	-1.44	1.42	4.75					9/30/12	4.75
<b>MacKay Shields</b>									
Gross of Fee Return	-1.21	2.17	5.20	9.61	10.57	9.94	9.71	9/30/99	9.20
Net of Fee Return	-1.29	1.98	4.92	9.23	10.19	9.58	9.33	9/30/99	8.83
Barclays High Yield	-1.44	1.42	4.75	9.49	10.74	10.94	8.91	9/30/99	7.67
<b>TOP NPL (A)</b>									
Gross of Fee Return	0.53	1.47	9.73	10.82				3/31/12	9.58
Net of Fee Return	0.53	1.47	9.73	10.82				3/31/12	9.58
Barclays High Yield	-1.44	1.42	4.75	9.49				3/31/12	9.10
<b>TPG Opp Partners II</b>									
Gross of Fee Return	12.38	13.22	17.06	15.10				3/31/12	8.96
Net of Fee Return	12.38	13.22	17.06	15.10				3/31/12	8.96
Barclays High Yield	-1.44	1.42	4.75	9.49				3/31/12	9.10
<b>Brevan Howard CMBS Fund</b>									
Gross of Fee Return	1.56	6.28	14.11	20.16				6/30/12	20.16
Net of Fee Return	1.56	6.28	14.11	20.16				6/30/12	20.16



PA Public School Employees' Retirement Sys  
 Fund Return Table  
 Quarter Ended 6/30/13

Manager	1 Quarter	2 Quarters	3 Quarters	1 Year	3 Years	5 Years	Since 6/30/03	Inception Date	Inception Return
<b>BlackRock Mortgage Investors</b>									
Gross of Fee Return	0.74	3.75	6.39	19.59	13.15	9.19		3/31/08	8.74
Net of Fee Return	0.74	3.75	6.39	19.59	13.15	9.19		3/31/08	8.74
Barclays High Yield	-1.44	1.42	4.75	9.49	10.74	10.94		3/31/08	10.75
<b>Brigade Distressed Value</b>									
Gross of Fee Return	-0.83	3.14	6.24	10.29				9/30/11	8.14
Net of Fee Return	-0.83	3.14	6.24	10.29				9/30/11	8.14
<b>Cerberus Levered Loan Fund I</b>									
Gross of Fee Return	2.74	5.13	7.95	11.28				12/31/11	11.64
Net of Fee Return	2.74	5.13	7.95	11.28				12/31/11	11.64
<b>Cerberus Levered Loan Fund II</b>									
Gross of Fee Return	2.46	4.89						12/31/12	4.89
Net of Fee Return	2.46	4.89						12/31/12	4.89
Barclays High Yield	-1.44	1.42						12/31/12	1.42
<b>ICG Europe Fund</b>									
Gross of Fee Return	7.27	-3.50						12/31/12	-3.50
Net of Fee Return	7.27	-3.50						12/31/12	-3.50
Barclays High Yield	-1.44	1.42						12/31/12	1.42
<b>Hayfin Special Opp. Credit</b>									
Gross of Fee Return	2.83							3/31/13	2.83
Net of Fee Return	2.83							3/31/13	2.83
Barclays High Yield	-1.44							3/31/13	-1.44



PA Public School Employees' Retirement Sys  
 Fund Return Table  
 Quarter Ended 6/30/13

Manager	1 Quarter	2 Quarters	3 Quarters	1 Year	3 Years	5 Years	Since 6/30/03	Inception Date	Inception Return
<b>LBC Credit Partners</b>									
Gross of Fee Return	4.17	7.39	10.60	22.35	17.05			12/31/08	6.34
Net of Fee Return	4.17	7.39	10.60	22.35	17.05			12/31/08	6.34
Barclays High Yield	-1.44	1.42	4.75	9.49	10.74			12/31/08	19.69
<b>LBC Credit Partners III</b>									
Gross of Fee Return	12.98							3/31/13	12.98
Net of Fee Return	12.98							3/31/13	12.98
<b>Mariner/Galton RMBS</b>									
Gross of Fee Return	1.06	6.78	11.94	22.97	13.82			6/30/10	13.82
Net of Fee Return	1.16	5.50	9.60	18.40	11.43			6/30/10	11.43
7.5% Annualized Return	1.82	3.68	5.57	7.50	7.50			6/30/10	7.50
USSWAP5 Index	3.64	6.66	9.28	11.83	17.78			6/30/10	17.78
USSWAP5 Index Plus 2%									
<b>Oaktree Loan Fund 2X, LP</b>									
Gross of Fee Return	-0.99	1.29	1.24	6.08	10.13	9.95		12/31/07	8.50
Net of Fee Return	-0.99	1.29	1.24	6.08	10.13	9.95		12/31/07	8.50
Barclays High Yield	-1.44	1.42	4.75	9.49	10.74	10.94		12/31/07	9.63
<b>Sankaty Credit Oppt. Fund IV</b>									
Gross of Fee Return	1.48	5.95	5.58	8.55	6.87			9/30/08	12.08
Net of Fee Return	1.48	5.95	5.58	8.55	6.87			9/30/08	12.08
Barclays High Yield	-1.44	1.42	4.75	9.49	10.74			9/30/08	13.75



**PA Public School Employees' Retirement Sys**  
**Fund Return Table**  
 Quarter Ended 6/30/13

Manager	1 Quarter	2 Quarters	3 Quarters	1 Year	3 Years	5 Years	Since 6/30/03	Inception Date	Inception Return
<b>Sankaty Advisors Bank Loans</b>									
Gross of Fee Return	0.36	3.97	5.49	9.28	8.95			6/30/09	10.51
Net of Fee Return	0.36	3.97	5.49	9.28	8.95			6/30/09	10.51
Barclays High Yield	-1.44	1.42	4.75	9.49	10.74			6/30/09	14.55
<b>Sankaty Middle Market Fund</b>									
Gross of Fee Return	1.77	6.40	10.76	18.35	12.12			6/30/10	12.12
Net of Fee Return	1.77	6.40	10.76	18.35	12.12			6/30/10	12.12
Barclays High Yield	-1.44	1.42	4.75	9.49	10.74			6/30/10	10.74
<b>Sankaty Credit Opp. Fund V-A</b>									
Gross of Fee Return	0.84	5.23	4.56					9/30/12	4.56
Net of Fee Return	0.84	5.23	4.56					9/30/12	4.56
Barclays High Yield	-1.44	1.42	4.75					9/30/12	4.75
<b>High Yield Fixed Income Composite</b>									
Gross of Fee Return	1.56	4.88	7.72	14.51	10.99	9.21	8.96	9/30/99	8.36
Net of Fee Return	1.56	4.74	7.47	14.03	10.65	8.94	8.64	9/30/99	8.02
Barclays High Yield	-1.44	1.42	4.75	9.49	10.74	10.94	8.91	9/30/99	7.67
CS High Yield Index	-1.38	1.51	4.71	9.18	10.30	10.10	8.66	9/30/99	7.89
Blended Policy (HY & Opp)	-1.44	1.42	4.75	9.49	10.74	10.86	9.03	9/30/99	8.16
<b>Total US FI X TIPS Composite</b>									
Gross of Fee Return	-0.48	1.49	3.51	8.38	8.62	8.86	6.79	6/30/82	9.31
Net of Fee Return	-0.48	1.40	3.36	8.10	8.41	8.68	6.64	6/30/97	7.13

\* Please note the PSERS U.S. Long Treasuries Fund has a 2Q2013 levered return of (55.20) and an unlevered return of (5.54). All respective composites are incorporating the levered return.



PA Public School Employees' Retirement Sys  
 Fund Return Table  
 Quarter Ended 6/30/13

Manager	1 Quarter	2 Quarters	3 Quarters	1 Year	3 Years	5 Years	Since 6/30/03	Inception Date	Inception Return
<b>Total Fixed Income x TIPS</b>									
Gross of Fee Return	-1.74	-0.22	1.92	6.77				6/30/12	6.77
Net of Fee Return	-1.77	-0.33	1.74	6.48				6/30/12	6.48
<b>Total FI x TIPS x Pimco Multi-Sector</b>									
Gross of Fee Return	-1.42	0.15	2.28	7.29				6/30/12	7.29
Net of Fee Return	-1.46	0.02	2.07	6.95				6/30/12	6.95
<b>PSERS Total TIPS (levered)</b>									
Gross of Fee Return	-6.31	-6.87	-6.07	-4.12	6.76	7.40		3/31/04	6.57
Net of Fee Return	-6.31	-6.87	-6.07	-4.12	6.76	7.40		3/31/04	6.57
Barclays U.S. TIPS Index	-7.05	-7.39	-6.75	-4.78	4.63	4.41		3/31/04	4.83
<b>US TIPS Composite</b>									
Gross of Fee Return	-6.31	-6.87	-6.07	-4.12	6.76	7.40		3/31/04	6.54
Net of Fee Return	-6.31	-6.87	-6.07	-4.12	6.76	7.40		3/31/04	6.53
Barclays U.S. TIPS Index	-7.05	-7.39	-6.75	-4.78	4.63	4.41		3/31/04	4.83

\*Please note the PSERS U.S. Long Treasuries Fund has a 2Q2013 levered return of (55.20) and an unlevered return of (5.54). All respective composites are incorporating the levered return.



PA Public School Employees' Retirement Sys  
 Fund Return Table  
 Quarter Ended 6/30/13

Manager	1 Quarter	2 Quarters	3 Quarters	1 Year	3 Years	5 Years	Since 6/30/03	Inception Date	Inception Return
<b>Black River Inflation Opp. Fund</b>									
Gross of Fee Return	27.01	15.77	24.13					9/30/12	24.13
Net of Fee Return	27.01	15.77	24.13					9/30/12	24.13
LIBOR 3 MONTH	0.07	0.14	0.22					9/30/12	0.22
<b>Black River Inflation Opp. Fund Cl B</b>									
Gross of Fee Return	-31.50							3/31/13	-31.50
Net of Fee Return	-31.50							3/31/13	-31.50
Blended Policy (Black River)	-32.92							3/31/13	-32.92
<b>Bridgewater TIPS</b>									
Gross of Fee Return	-11.78	-10.83	-8.86	-4.08	13.21	14.81		6/30/04	11.89
Net of Fee Return	-11.78	-11.06	-9.34	-4.82	12.17	13.75		6/30/04	11.17
BGI Custom IL Bond Index	-11.84	-10.86	-9.02	-6.14	2.71	3.59		6/30/04	4.84
<b>TIPS Composite</b>									
Gross of Fee Return	-10.25	-10.01	-8.47	-5.27	9.04	10.01		3/31/04	8.18
Net of Fee Return	-10.25	-10.13	-8.72	-5.65	8.57	9.57		3/31/04	7.90
Blended Policy (Net Levered TIPS)	-13.97	-14.67	-13.57	-11.74	2.02	2.83		3/31/04	3.98

\*The Blended Policy (Net Levered TIPS) is incorporating one turn of leverage against the Barclays TIPS Index and is reduced for the cost of financing (represented by the 3 month LIBOR).

\*The Blended Policy (Black River) is calculated as \$1.5 billion (Notional Value) x U.S. 1-10 Year TIPS Index - \$1.25 billion x 3 month LIBOR/(beginning monthly NAV).



**PA Public School Employees' Retirement Sys**  
**Fund Return Table**  
 Quarter Ended 6/30/13

Manager	1 Quarter	2 Quarters	3 Quarters	1 Year	3 Years	5 Years	Since 6/30/03	Inception Date	Inception Return
<b>Total US Fixed Income Composite</b>									
Gross of Fee Return	-4.39	-3.10	-1.27	2.93	8.49	9.02	7.11	6/30/82	9.41
Net of Fee Return	-4.43	-3.25	-1.51	2.56	8.17	8.75	6.91	6/30/97	7.30
Barclays Universal	-2.37	-2.29	-1.73	0.24	4.08	5.52	4.84	6/30/97	5.97
Barclays Aggregate Index	-2.32	-2.44	-2.24	-0.69	3.51	5.19	4.52	6/30/97	5.83
Blended Policy (Total US FI)	-5.58	-4.84	-3.25	-0.50	6.03	7.87	6.05	6/30/97	6.79
<b>PIMCO Multi-Sector Strategy</b>									
Gross of Fee Return	-3.96	-2.81	-0.60	3.06				6/30/12	3.06
Net of Fee Return	-3.96	-2.81	-0.60	3.06				6/30/12	3.06
Blended Policy Index	-2.96	-2.26	-0.49	2.61				6/30/12	2.61
<b>Total Fixed Income Composite</b>									
Gross of Fee Return	-4.46	-3.34	-1.39	2.94	8.19	8.75	7.03	6/30/91	7.56
Net of Fee Return	-4.48	-3.45	-1.59	2.62	7.87	8.47	6.83	6/30/97	7.05
Blended Policy (Total FI)	-5.33	-4.99	-3.35	-0.26	5.99	7.49	6.00	6/30/97	6.65

\*Please note the PSERS U.S. Long Treasuries Fund has a 2Q2013 levered return of (5.54) and an unlevered return of (5.54). All respective composites are incorporating the levered return  
 \*The PIMCO Multi-Sector Strategy Fund policy is as follows: 26% Barclays U.S. Agg. Bond, 16% Barclays U.S. Treasury Long, 5% Barclays Global Agg. GDP-weighted Dev. Mkt ex-U.S. (Unhedged)  
 42% Barclays U.S. High Yield Bond, and 11% Barclays Emerging Markets Local Currency - Government - MV Weighted (Unhedged) - 10% Country Max Can



PA Public School Employees' Retirement Sys  
 Fund Return Table  
 Quarter Ended 6/30/13

Manager	1 Quarter	2 Quarters	3 Quarters	1 Year	3 Years	5 Years	Since 6/30/03	Inception Date	Inception Return
<b>Unallocated Cash &amp; Cash Equivalents</b>									
Gross of Fee Return	0.05	0.19	0.43	0.61	2.46	0.77	0.65		
Net of Fee Return	0.02	0.16	0.37	0.54	2.42	0.74	0.64	6/30/98	0.34
ML US T-Bill 0-3 Months Index	0.01	0.03	0.05	0.08	0.08	0.22	1.64	6/30/98	2.39
<b>Security Capital - Preferred Growth</b>									
Gross of Fee Return	1.66	7.42	9.43	10.46	12.74	8.21		6/30/08	8.21
Net of Fee Return	1.66	7.42	9.43	10.46	12.74	8.21		6/30/08	8.21
Wilshire Real Est. Secs Index	-1.41	5.89	8.50	8.38	18.30	7.03		6/30/08	7.03
<b>PTRES Composite</b>									
Gross of Fee Return	1.80	7.57	9.59	10.62	12.80	5.10	11.39	9/30/95	11.82
Net of Fee Return	1.80	7.57	9.59	10.62	12.78	4.75	11.04	6/30/97	9.81
FTSE EPRA/NAREIT Developed RE	-3.63	2.40	8.31	14.27	15.98	4.58	11.03	6/30/97	7.47
FTSE EPRA/NAREIT Developed X-US	-5.14	0.01	9.52	21.62	14.28	2.52	11.42	6/30/97	6.51
FTSE EPRA/NAREIT Global RE Index	-4.32	1.27	7.68	14.21	14.96	4.01			
Wilshire Real Est. Secs Index	-1.41	5.89	8.50	8.38	18.30	7.03	10.88	6/30/97	9.46
Blended Policy (PTRES)	-4.32	1.27	7.68	14.21	14.96	4.12	9.79	6/30/97	8.85
<b>Black River Global Agriculture Fund</b>									
Gross of Fee Return	-5.22							3/31/13	-5.22
Net of Fee Return	-5.22							3/31/13	-5.22
DJ UBS Commodity Index	-9.44							3/31/13	-9.44



**PA Public School Employees' Retirement Sys**  
**Fund Return Table**  
 Quarter Ended 6/30/13

Manager	1 Quarter	2 Quarters	3 Quarters	1 Year	3 Years	5 Years	Since 6/30/03	Inception Date	Inception Return
<b>Credit Suisse</b>									
Gross of Fee Return	-9.23	-10.19	-15.60	-6.88	0.33	-11.02		12/31/06	-2.43
Net of Fee Return	-9.27	-10.33	-15.73	-7.06	0.14	-11.19		12/31/06	-2.61
DJ UBS Commodity Index	-9.44	-10.47	-16.13	-8.00	-0.25	-11.61		12/31/06	-3.42
<b>DB Advisors</b>									
Gross of Fee Return	-2.56	-2.59	-3.83	4.40	5.02	-8.99		6/30/07	-3.11
Net of Fee Return	-2.87	-3.10	-4.55	3.40	4.07	-9.84		6/30/07	-3.96
Blended Benchmark (DBA)	-7.36	-7.37	-9.62	-1.41	4.29	-7.78		6/30/07	-2.34
<b>Gresham</b>									
Gross of Fee Return	-8.33	-9.42	-13.28	-4.69	4.47	-7.96		9/30/07	-2.15
Net of Fee Return	-8.41	-9.56	-13.66	-5.18	3.54	-8.59		9/30/07	-2.73
DJ UBS Commodity Index	-9.44	-10.47	-16.13	-8.00	-0.25	-11.61		9/30/07	-5.58
<b>PSERS Gold Fund</b>									
Gross of Fee Return	-22.71	-26.67	-30.86	-23.82				6/30/12	-23.82
Net of Fee Return	-22.71	-26.67	-30.86	-23.82				6/30/12	-23.82
<b>Schroders Investment Management</b>									
Gross of Fee Return	-7.99	-9.89	-15.14	-6.29	2.75	-7.24		9/30/07	-0.42
Net of Fee Return	-8.18	-10.25	-15.64	-7.01	1.99	-7.99		9/30/07	-1.12
DJ UBS Commodity Index	-9.44	-10.47	-16.13	-8.00	-0.25	-11.61		9/30/07	-5.58
<b>Wellington Management Company</b>									
Gross of Fee Return	-10.87	-11.36	-13.73	-5.70	3.72	-6.66		12/31/06	1.15
Net of Fee Return	-11.09	-11.78	-14.33	-6.57	2.72	-7.60		12/31/06	0.23
Blended Benchmark (WMC)	-9.26	-9.70	-11.99	-3.66					

\*Please note the PSERS Gold Fund has a 2Q2013 levered return of (100.00) and an unlevered return of (22.71). All respective composites are incorporating the levered return.





PA Public School Employees' Retirement Sys  
 Fund Return Table  
 Quarter Ended 6/30/13

Manager	1 Quarter	2 Quarters	3 Quarters	1 Year	3 Years	5 Years	Since 6/30/03	Inception Date	Inception Return
<b>Commodities Composite</b>									
Gross of Fee Return	-14.03	-15.80	-20.00	-10.71	1.21	-9.34		12/31/06	-0.90
Net of Fee Return	-14.22	-16.12	-20.46	-11.35	0.41	-10.05		12/31/06	-1.58
DJ UBS Commodity Index	-9.44	-10.47	-16.13	-8.00	-0.25	-11.61		12/31/06	-3.42
<b>AEOLUS PROPERTY CATASTROPHE FUND</b>									
Gross of Fee Return	-1.79	1.34	0.71	12.62				6/30/12	12.62
Net of Fee Return	-1.79	1.34	0.71	12.62				6/30/12	12.62
<b>APOLLO/SCIENS AVIATION FUND II</b>									
Gross of Fee Return	3.88							3/31/13	3.88
Net of Fee Return	3.88							3/31/13	3.88
<b>AQR OFFSHORE MULTI-STRATEGY FUND</b>									
Gross of Fee Return	5.81	4.12	7.65	4.87	7.63	7.26		12/31/05	0.46
Net of Fee Return	5.81	4.12	7.65	4.87	7.63	7.26		12/31/05	0.46
1 Month LIBOR Rate	0.05	0.10	0.15	0.21	0.23	0.46		12/31/05	1.85
<b>BLACK RIVER FIXED INCOME REL VALUE OPP</b>									
Gross of Fee Return	2.29	2.39	4.20	5.71				12/31/11	6.08
Net of Fee Return	2.29	2.39	4.20	5.71				12/31/11	6.08
<b>BLACKROCK CAPITAL STRUCTURE INV FUND</b>									
Gross of Fee Return	2.39	0.81	5.16	5.07	6.77			6/30/09	6.57
Net of Fee Return	2.39	0.81	5.16	5.07	6.77			6/30/09	6.57
1 Month LIBOR Rate	0.05	0.10	0.15	0.21	0.23			6/30/09	0.24



PA Public School Employees' Retirement Sys  
 Fund Return Table  
 Quarter Ended 6/30/13

Manager	1 Quarter	2 Quarters	3 Quarters	1 Year	3 Years	5 Years	Since 6/30/03	Inception Date	Inception Return
<b>Blue Trend Fund Limited</b>									
Gross of Fee Return	-14.53	-10.42	-12.34	-6.92				6/30/12	-6.92
Net of Fee Return	-14.75	-10.65	-12.67	-7.27				6/30/12	-7.27
<b>Brevan Howard Fund Limited</b>									
Gross of Fee Return	0.32	4.05	6.51	12.39	6.84			6/30/10	6.84
Net of Fee Return	0.32	4.05	6.51	12.39	6.84			6/30/10	6.84
LIBOR 3 MONTH	0.07	0.14	0.22	0.34	0.36			6/30/10	0.36
<b>Bridgewater Pure Alpha Fund II</b>									
Gross of Fee Return	-0.24	-1.06	-1.16	4.35	20.27	14.63		12/31/05	15.32
Net of Fee Return	-0.24	-1.06	-1.16	4.35	20.27	14.63		12/31/05	15.32
LIBOR 3 MONTH	0.07	0.14	0.22	0.34	0.36	0.69		12/31/05	2.05
<b>Brigade Leveraged Capital Structures</b>									
Gross of Fee Return	-0.31	1.89	3.68	5.22	5.07	6.49		9/30/07	6.42
Net of Fee Return	-0.31	1.89	3.68	5.22	5.08	6.49		9/30/07	6.42
1 Month LIBOR Rate	0.05	0.10	0.15	0.21	0.23	0.46		9/30/07	0.85



PA Public School Employees' Retirement Sys  
 Fund Return Table  
 Quarter Ended 6/30/13

Manager	1 Quarter	2 Quarters	3 Quarters	1 Year	3 Years	5 Years	Since 6/30/03	Inception Date	Inception Return
<b>Capula Global Relative Value Fund</b>									
Gross of Fee Return	0.63	3.42	3.84	4.71				3/31/11	4.44
Net of Fee Return	0.63	3.42	3.84	4.71				3/31/11	4.44
1 Month LIBOR Rate	0.05	0.10	0.15	0.21				3/31/11	0.22
<b>Capula Tail Risk Fund</b>									
Gross of Fee Return	0.07	0.50	-1.71	-6.02				6/30/11	-0.96
Net of Fee Return	0.07	0.50	-1.71	-6.02				6/30/11	-0.96
<b>Caspian Select Credit Intl.</b>									
Gross of Fee Return	1.09	4.65	7.71	11.26				3/31/11	4.90
Net of Fee Return	1.09	4.65	7.71	11.26				3/31/11	4.90
1 Month LIBOR Rate	0.05	0.10	0.15	0.21				3/31/11	0.22
<b>Ellis Lake Domestic Fund</b>									
Gross of Fee Return	0.89							3/31/13	0.89
Net of Fee Return	0.89							3/31/13	0.89



PA Public School Employees' Retirement Sys  
 Fund Return Table  
 Quarter Ended 6/30/13

Manager	1 Quarter	2 Quarters	3 Quarters	1 Year	3 Years	5 Years	Since 6/30/03	Inception Date	Inception Return
<b>Lazard Emerging Income Plus</b>									
Gross of Fee Return	-5.09	-3.83	0.29	5.29	3.21			9/30/09	4.18
Net of Fee Return	-5.09	-3.83	0.29	5.29	3.25			9/30/09	4.24
LIBOR 3 MONTH	0.07	0.14	0.22	0.34	0.36			9/30/09	0.35
<b>Nephila/Palmetto Fund</b>									
Gross of Fee Return	1.12	1.39	4.68	9.40				6/30/11	7.42
Net of Fee Return	1.12	1.39	4.68	9.40				6/30/11	7.42
<b>PIMCO PARS/GCOF/MAV Composite</b>									
Gross of Fee Return	-1.60	2.15	4.24	11.78	12.38	15.13		3/31/08	14.33
Net of Fee Return	-1.37	1.72	2.99	8.58	7.98	10.16		3/31/08	9.62
1 Month LIBOR Rate	0.05	0.10	0.15	0.21	0.23	0.46		3/31/08	0.56
<b>Robeco Transrend Diversified Fund</b>									
Gross of Fee Return	-3.11	-1.61	-6.08	-6.96				9/30/11	-0.40
Net of Fee Return	-3.11	-1.61	-6.08	-6.96				9/30/11	-0.40
<b>Total Absolute Return Composite</b>									
Gross of Fee Return	-0.43	1.07	1.82	4.48	7.09			3/31/09	9.18
Net of Fee Return	-0.42	0.92	1.54	4.01	6.54			3/31/09	8.43
Blended Policy (Abs Ret)	1.82	3.68	5.57	7.50	7.67			3/31/09	7.76



**PA Public School Employees' Retirement Sys**  
**Fund Return Table**  
 Quarter Ended 6/30/13

Manager	1 Quarter	2 Quarters	3 Quarters	1 Year	3 Years	5 Years	Since 6/30/03	Inception Date	Inception Return
<b>AQR GRP EL 20 Offshore Fund</b>									
Gross of Fee Return	-20.64	-14.00						12/31/12	-14.00
Net of Fee Return	-20.64	-14.00						12/31/12	-14.00
<b>Bridgewater All Weather @15</b>									
Gross of Fee Return	-12.61	-11.83	-9.82					9/30/12	-9.82
Net of Fee Return	-12.61	-11.83	-9.82					9/30/12	-9.82
<b>PSERS Optimal Liquid Beta</b>									
Gross of Fee Return	-14.40							3/31/13	-14.40
Net of Fee Return	-14.40							3/31/13	-14.40
<b>Risk Parity Composite</b>									
Gross of Fee Return	-14.52	-12.46	-10.71	-4.26				6/30/11	7.82
Net of Fee Return	-14.52	-12.46	-10.71	-4.26				6/30/11	7.82
Blended Policy (Risk Pari.)	-11.85	-8.52	-7.02	-2.68				6/30/11	-1.39

\*The Risk Parity Policy is as follows: 35% MSCI ACWI (\$Net), 75% Barclays Capital U.S. Treasury Index, 120% Barclays Capital World Inflation Linked Bond Index Hedged, 5% DJ/UBS Commodity Index (Total Return), 5% DJ/UBS Gold Index, -150%<sup>a</sup>3-Month LIBOR



**PA Public School Employees' Retirement Sys**  
**Fund Return Table**  
 Quarter Ended 6/30/13

Manager	1 Quarter	2 Quarters	3 Quarters	1 Year	3 Years	5 Years	Since 6/30/03	Inception Date	Inception Return
<b>Altantic Trust Private Wealth Mgmt.</b>									
Gross of Fee Return	3.19	24.48	23.95					9/30/12	23.95
Net of Fee Return	3.19	24.36	23.80					9/30/12	23.80
S&P MLP Index	2.56	23.03	18.97					9/30/12	18.97
<b>Harvest Funds</b>									
Gross of Fee Return	3.30	25.80	25.46	37.79	28.64			9/30/08	29.21
Net of Fee Return	3.20	25.54	24.95	37.23	27.89			9/30/08	28.44
S&P MLP Index	2.56	23.03	18.97	29.49	21.38			9/30/08	24.49
<b>Salient Capital Partners</b>									
Gross of Fee Return	4.77	26.34	28.02					9/30/12	28.02
Net of Fee Return	4.69	26.11	27.69					9/30/12	27.69
S&P MLP Index	2.56	23.03	18.97					9/30/12	18.97
<b>MLP Composite</b>									
Gross of Fee Return	3.75	25.64	25.84	37.48	28.54			9/30/08	29.15
Net of Fee Return	3.68	25.43	25.48	37.08	27.84			9/30/08	28.41
S&P MLP Index	2.56	23.03	18.97	29.49	21.38			9/30/08	24.49
<b>Total Public Market Composite</b>									
Gross of Fee Return	-3.08	0.23	1.71	7.25	9.39	3.42	7.42	3/31/92	8.13
Net of Fee Return	-3.18	0.05	1.44	6.84	9.03	3.08	7.15	3/31/98	5.48
Blended Policy (Pub Mkt)	-3.60	-0.83	0.31	4.87	7.50	1.70	6.13	3/31/98	4.60

\*The PSERS Total Public Markets Composite is incorporating the levered returns for the PSERS Gold Fund and PSERS U.S. Long Treasuries Fund.



PA Public School Employees' Retirement Sys  
 Fund Return Table  
 Quarter Ended 6/30/13

Manager	1 Quarter	2 Quarters	3 Quarters	1 Year	3 Years	5 Years	Since 6/30/03	Inception Date	Inception Return
<b>Private Real Estate Composite</b>									
Policy Index	2.31	4.45	7.41	9.24	12.30	-8.26	6.11	3/31/81	7.37
	1.93	5.12	7.39	9.74	12.37	1.82	8.24	3/31/81	8.21
<b>Total Real Estate Composite</b>									
Policy Index	2.29	4.54	6.72	8.53	12.09	-6.36	6.66	3/31/81	7.63
	1.93	5.12	7.39	9.74	12.37	2.72	8.75	3/31/81	8.41
<b>Total Fund Composite Ex. Alt. Inv.</b>									
Blended Policy (TF x AH)	-2.26	0.79	2.43	7.30	9.70	1.98	6.86	3/31/81	7.68
	-2.69	0.15	1.46	5.69	8.23	1.85	6.35		
<b>Private Equity Composite</b>									
Venture Capital Composite	3.42	7.81	10.05	10.28	13.91	4.63	15.75	3/31/01	11.48
Private Eq/Venture Capital Comp	0.95	0.10	3.64	5.27	8.06	-0.33	6.70	3/31/01	1.62
Internally Managed Composite	3.19	7.06	9.44	9.81	13.33	4.12	14.74	6/30/98	10.19
Priv. Eq/Venture Cap/Priv. Debt/Int.	0.49	13.03	15.83	47.86				3/31/12	36.74
	3.11	7.10	9.67	10.34				3/31/12	13.16
<b>Managed Stock Distribution</b>									
Priv Equity/Venture Cap Total Comp	-22.25	-3.98	10.41	7.27	-31.20	-23.84	-5.28	6/30/98	-5.93
Venture Econ Index (Lagged)	3.18	7.06	9.45	9.82	13.20	4.04	14.71	6/30/98	10.12
	2.13	4.14	5.84	5.66	7.69	3.22	6.11	6/30/98	3.52
<b>Private Debt Composite</b>									
Private Eq/Venture Cap/Private Debt	2.55	6.94	10.40	12.43	10.16	7.19	11.35	3/31/01	8.01
	3.12	7.08	9.64	10.28	12.79	5.03	14.34	6/30/98	10.42



PA Public School Employees' Retirement Sys  
 Fund Return Table  
 Quarter Ended 6/30/13

Manager	1 Quarter	2 Quarters	3 Quarters	1 Year	3 Years	5 Years	Since 6/30/03	Inception Date	Inception Return
<b>Total Alternative Investments</b>									
Venture Econ Index (Lagged) - Int	3.10	7.10	9.67	10.34	12.71	4.98	14.32	6/30/98	10.40
Venture Econ Index (Lagged) - VC	-1.86	-3.80	-4.90	-36.94					
Venture Econ Index (Lagged) - VC	0.68	-0.50	-0.73	-0.88	1.12	-2.82	-1.61		
Venture Econ Index (Lagged) - PE	2.28	4.60	6.50	6.34	8.31	3.79	6.63		
Venture Econ Index(Lagged)-PE/PD/VC/INT	2.13	4.14	5.84	5.66	7.69	3.22	6.11	6/30/98	3.52
<b>Total Private Market Composite</b>									
Blended Policy (Priv Mkt)	2.81	6.12	8.83	9.92	12.57	0.45	11.45	3/31/81	8.47
	2.05	4.50	6.41	7.12	9.18	2.84	6.93		





PA Public School Employees' Retirement Sys  
 Fund Return Table  
 Quarter Ended 6/30/13

Manager	1 Quarter	2 Quarters	3 Quarters	1 Year	3 Years	5 Years	Since 6/30/03	Inception Date	Inception Return
<b>PSERS Total Fund</b>									
Gross of Fee Return	-1.04	2.32	4.27	8.41	10.78	2.87	8.03	6/30/82	10.21
Net of Fee Return	-1.12	2.14	3.98	7.96	10.36	2.50	7.72	6/30/97	6.57
Blended Policy (TF)	-1.65	1.02	2.39	5.68	8.13	1.99	6.33		
<b>PSERS Prop Fund</b>									
Gross of Fee Return	0.03	0.09	0.14	0.22	0.26			12/31/08	0.46
Net of Fee Return	0.03	0.09	0.14	0.22	0.26			12/31/08	0.46
ML US T-Bill 0-3 Months	0.01	0.03	0.05	0.08	0.08			12/31/08	0.10
<b>Total Cash (Allocated and Unallocated)</b>									
Gross of Fee Return	0.03	0.09	0.14	0.22	1.43			12/31/08	1.24
Net of Fee Return	0.03	0.09	0.14	0.22	1.43			12/31/08	1.24

\*The PSERS Total Fund is incorporating the levered returns for the PSERS Gold Fund and PSERS U.S. Long Treasuries Fund.

PA Public School Employees' Retirement Sys  
Fund Return Table  
Quarter Ended 6/30/13

Manager	1 Quarter	2 Quarters	3 Quarters	1 Year	3 Years	5 Years	Since 6/30/03	Inception Date	Inception Return
<b>PSERS Cash Management</b>									
Gross of Fee Return	0.05	0.20	0.44	0.62	0.53	-0.54	-0.01		
Net of Fee Return	0.02	0.16	0.37	0.55	0.49	-0.57	-0.02	6/30/98	-0.10
<b>PSERS Cash Management Sub</b>									
Gross of Fee Return	0.02	0.04	0.07	0.10	0.14			12/31/08	0.23
Net of Fee Return	0.02	0.04	0.07	0.10	0.14			12/31/08	0.23
<b>Unallocated Cash &amp; Cash Equivalents</b>									
Gross of Fee Return	0.05	0.19	0.43	0.61	2.46	0.77	0.65		
Net of Fee Return	0.02	0.16	0.37	0.54	2.42	0.74	0.64	6/30/98	0.34
ML US T-Bill 0-3 Months Index	0.01	0.03	0.05	0.08	0.08	0.22	1.64	6/30/98	2.39
<b>PSERS Healthcare - Premium Assist</b>									
Gross of Fee Return	-0.10	0.14	0.26	0.41	0.77	1.51	2.66	3/31/92	4.01
Net of Fee Return	-0.10	0.14	0.26	0.41	0.77	1.51	2.66	3/31/92	4.01
ML US T-Bill 0-3 Months Index	0.01	0.03	0.05	0.08	0.08	0.22	1.64		
<b>PSERS Healthcare - HOP</b>									
Gross of Fee Return	0.05	0.12	0.19	0.25	0.29	0.63	2.53	12/31/01	2.20
Net of Fee Return	0.05	0.12	0.19	0.25	0.29	0.63	2.53	12/31/01	2.20
<b>PSERS LIBOR</b>									
Gross of Fee Return	0.01	0.33	0.45	0.65	0.77	1.46		12/31/06	2.26
Net of Fee Return	0.01	0.33	0.45	0.65	0.77	1.46		12/31/06	2.26
LIBOR 3 MONTH	0.07	0.14	0.22	0.34	0.36	0.69		12/31/06	1.58



PA Public School Employees' Retirement Sys  
 Fund Return Table  
 Quarter Ended 6/30/13

Manager	1 Quarter	2 Quarters	3 Quarters	1 Year	3 Years	5 Years	Since 6/30/03	Inception Date	Inception Return
<b>Radcliffe Capital Mgmt.</b>									
Gross of Fee Return	0.27	1.64	2.83					9/30/12	2.83
Net of Fee Return	0.20	1.29	2.25					9/30/12	2.25
<b>LIBOR Composite</b>									
Gross of Fee Return	0.06	0.62	0.93	1.42	1.09	1.61		12/31/06	2.38
Net of Fee Return	0.05	0.56	0.84	1.29	1.04	1.56		12/31/06	2.34
LIBOR 3 MONTH	0.07	0.14	0.22	0.34	0.36	0.69		12/31/06	1.58
<b>PSERS TIPS (unlevered)</b>									
Gross of Fee Return	-8.03	-8.76	-7.83	-5.48	6.27	6.63		3/31/04	6.16
Net of Fee Return	-8.03	-8.76	-7.83	-5.48	6.27	6.63		3/31/04	6.16
<b>PSERS TIPS (cash)</b>									
Gross of Fee Return	-0.01	0.15	0.35	0.59	0.74			3/31/09	1.47
Net of Fee Return	-0.01	0.15	0.35	0.59	0.74			3/31/09	1.47
<b>PSERS Total TIPS (levered)</b>									
Gross of Fee Return	-6.31	-6.87	-6.07	-4.12	6.76	7.40		3/31/04	6.57
Net of Fee Return	-6.31	-6.87	-6.07	-4.12	6.76	7.40		3/31/04	6.57
Barclays U.S. TIPS Index	-7.05	-7.39	-6.75	-4.78	4.63	4.41		3/31/04	4.83



PA Public School Employees' Retirement Sys  
 Fund Return Table  
 Quarter Ended 6/30/13

Manager	1 Quarter	2 Quarters	3 Quarters	1 Year	3 Years	5 Years	Since 6/30/03	Inception Date	Inception Return
<b>Black River Global Agriculture</b>									
Gross of Fee Return	5.76							3/31/13	5.76
Net of Fee Return	5.76							3/31/13	5.76
DJ UBS Agriculture Index	-4.47							3/31/13	-4.47
<b>Black River Global Ag. Fund STIF</b>									
Gross of Fee Return	0.05							3/31/13	0.05
Net of Fee Return	0.05							3/31/13	0.05
ML US T-Bill 0-3 Months	0.01							3/31/13	0.01
<b>Black River Global Ag. Swap</b>									
Gross of Fee Return	-9.42							3/31/13	-9.42
Net of Fee Return	-9.42							3/31/13	-9.42
DJ UBS Commodity Index	-9.44							3/31/13	-9.44
<b>Black River Global Agriculture Fund</b>									
Gross of Fee Return	-5.22							3/31/13	-5.22
Net of Fee Return	-5.22							3/31/13	-5.22
DJ UBS Commodity Index	-9.44							3/31/13	-9.44



**PA Public School Employees' Retirement Sys**  
**Fund Return Table**  
 Quarter Ended 6/30/13

Manager	1 Quarter	2 Quarters	3 Quarters	1 Year	3 Years	5 Years	Since 6/30/03	Inception Date	Inception Return
<b>PIMCO PARS</b>									
Gross of Fee Return	-1.73	-0.15	3.01					9/30/12	3.01
Net of Fee Return	-1.73	-0.15	3.01					9/30/12	3.01
<b>PIMCO GCOF</b>									
Gross of Fee Return	1.86	12.60	15.21					9/30/12	15.21
Net of Fee Return	1.41	12.10	14.69					9/30/12	14.69
<b>PIMCO MAV</b>									
Gross of Fee Return	-5.51	-6.45	-5.83	-5.83				6/30/12	-5.83
Net of Fee Return	-5.51	-6.45	-5.83	-5.83				6/30/12	-5.83
<b>PIMCO PARS/GCOF/MAV Composite</b>									
Gross of Fee Return	-1.60	2.15	4.24	11.78	12.38	15.13		3/31/08	14.33
Net of Fee Return	-1.37	1.72	2.99	8.58	7.98	10.16		3/31/08	9.62
1 Month LIBOR Rate	0.05	0.10	0.15	0.21	0.23	0.46		3/31/08	0.56

\*The PIMCO PARS/GCOF/MAV Composite is incorporating an aggregate performance fee accrual. This fee cannot be allocated to each individual account.

\*The difference between the sum of the three underlying funds market values and the composite market value is the fee accrual.



PA Public School Employees' Retirement Sys  
 Fund Return Table  
 Quarter Ended 6/30/13

Manager	1 Quarter	2 Quarters	3 Quarters	1 Year	3 Years	5 Years	Since 6/30/03	Inception Date	Inception Return
<b>AH Lisanti</b>									
Gross of Fee Return	7.02	24.63	20.82	26.00	22.78			9/30/08	15.45
Net of Fee Return	6.92	24.39	20.42	25.47	22.30			9/30/08	15.00
MSCI USA Small Cap Growth	3.90	16.43	18.48	25.03	20.43			9/30/08	12.71
Russell 2000 Growth	3.73	17.42	17.95	23.66	19.95			9/30/08	11.05
Blended Benchmark (AH Lisanti)	3.90	16.43	18.48	25.03	19.72			9/30/08	10.92
<b>Conestoga Capital Advisors</b>									
Gross of Fee Return	2.38	17.47	18.84	20.53	21.71	12.47		12/31/04	9.06
Net of Fee Return	2.28	17.25	18.47	20.03	21.20	11.99		12/31/04	8.61
MSCI USA Small Cap Index	2.63	15.75	18.75	25.18	19.38	10.10		12/31/04	6.68
Russell 2000	3.09	15.86	18.00	24.20	18.67	8.77		12/31/04	6.30
Blended Benchmark (Conestoga)	2.63	15.75	18.75	25.18	19.08	8.99		12/31/04	6.43
<b>Opus Capital Management</b>									
Gross of Fee Return	1.27	13.17	17.66	23.89	16.76	9.22		12/31/04	6.31
Net of Fee Return	1.20	13.03	17.40	23.53	16.35	8.74		12/31/04	5.80
MSCI USA Small Cap Value	1.38	15.08	19.01	25.32	18.24	11.10		12/31/04	6.93
Russell 2000 Value	2.47	14.38	18.07	24.75	17.33	8.59		12/31/04	5.59
Blended Benchmark (Opus)	1.38	15.08	19.01	25.32	18.35	9.15		12/31/04	5.91

PA Public School Employees' Retirement Sys  
 Fund Return Table  
 Quarter Ended 6/30/13

Manager	1 Quarter	2 Quarters	3 Quarters	1 Year	3 Years	5 Years	Since 6/30/03	Inception Date	Inception Return
<b>E/M US Equity Composite</b>									
Gross of Fee Return	3.50	18.20	19.10	24.10	19.11	9.39	8.77	12/31/99	4.72
Net of Fee Return	3.41	17.96	18.72	23.59	18.59	8.91	8.31	12/31/99	4.29
Blended Policy (E/M US Eq)	2.63	15.18	17.02	23.54	19.95	8.79	8.53	12/31/99	5.09
<b>John Hsu Capital</b>									
Gross of Fee Return	-3.30	-0.47	5.91	11.52	7.24	2.32	10.71	3/31/98	6.38
Net of Fee Return	-3.39	-0.68	5.59	11.08	6.83	1.92	10.28	3/31/98	5.95
MSCI World Index (N)	0.64	8.43	11.12	18.57	13.72	2.70	7.24	3/31/98	3.77
<b>Shah Capital Management</b>									
Gross of Fee Return	6.68	3.19	19.96	16.73	-12.55	0.77		6/30/06	2.73
Net of Fee Return	6.68	3.19	19.96	16.73	-12.55	0.77		6/30/06	2.62
MSCI World (N)	0.64	8.43	11.12	18.57	13.72	2.70		6/30/06	3.37
1 Mo LIBOR (lag)	0.05	0.10	0.15	0.21	0.24	0.50			
Blended Benchmark (Shah)	0.35	4.25	5.58	9.15	7.16	2.31		6/30/06	3.26
<b>Glovista</b>									
Gross of Fee Return	-7.05	-11.08	-4.14	1.54				9/30/11	7.69
Net of Fee Return	-7.22	-11.39	-4.58	1.07				9/30/11	7.33
MSCI EM Index (N)	-8.08	-9.57	-4.53	2.87				9/30/11	6.49
<b>E/M Non-US Equity Composite</b>									
Gross of Fee Return	-3.03	-3.49	5.30	8.76	0.81	3.36	10.84	3/31/98	6.47
Net of Fee Return	-3.13	-3.69	5.00	8.40	0.45	3.02	10.45	3/31/98	6.05
Blended Policy (E/M Non-US)	-2.00	2.13	5.09	11.44	7.23	1.16	6.53		



**PA Public School Employees' Retirement Sys**  
**Fund Return Table**  
 Quarter Ended 6/30/13

Manager	1 Quarter	2 Quarters	3 Quarters	1 Year	3 Years	5 Years	Since 6/30/03	Inception Date	Inception Return
<b>Piedmont Inv. Advisors</b>									
Gross of Fee Return	-2.76	-2.58	-2.18	0.15	4.28	6.05		12/31/04	5.27
Net of Fee Return	-2.82	-2.70	-2.36	-0.10	4.03	5.80		12/31/04	5.01
Barclays Aggregate Index	-2.32	-2.44	-2.24	-0.69	3.51	5.19		12/31/04	4.79
<b>Pugh Capital Management</b>									
Gross of Fee Return	-2.73	-2.57	-2.09	-0.19	4.23	6.43		6/30/06	6.47
Net of Fee Return	-2.78	-2.67	-2.23	-0.38	4.03	6.21		6/30/06	6.25
Barclays Aggregate Index	-2.32	-2.44	-2.24	-0.69	3.51	5.19		6/30/06	5.60
<b>E/M US Core Plus FI Composite</b>									
Gross of Fee Return	-2.74	-2.57	-2.12	-0.06	3.98	-1.07		12/31/04	1.09
Net of Fee Return	-2.79	-2.68	-2.28	-0.27	3.77	-1.24		12/31/04	0.88
Blended Policy (E/M US FI)	-2.32	-2.44	-2.24	-0.69	3.32	3.98		12/31/04	4.08
<b>E/M Total Program Composite</b>									
Gross of Fee Return	-0.41	4.78	7.35	10.63	8.51	4.08	6.73		
Net of Fee Return	-0.49	4.61	7.07	10.26	8.10	3.70	6.33	3/31/95	7.53
Emerging Mgr Bnchmk	-0.20	5.33	6.85	11.41	11.54	5.08	7.01	3/31/95	8.24